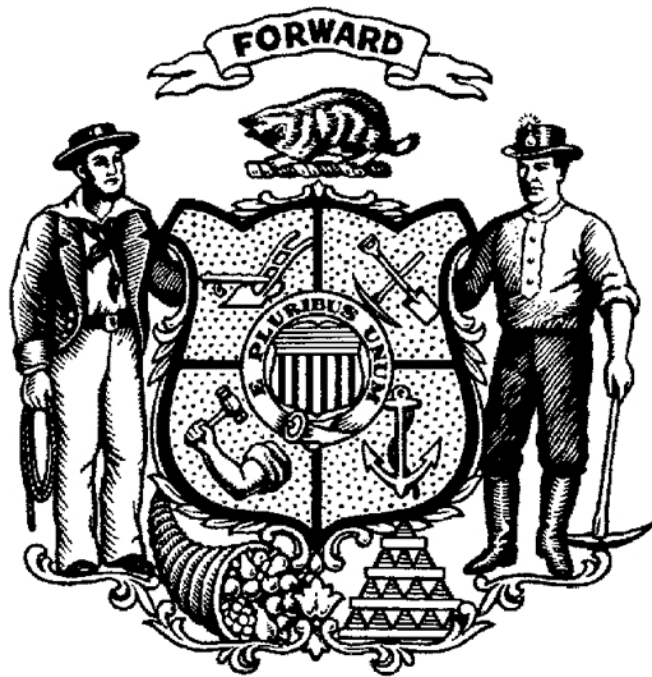


State of Wisconsin

Judicial Commission



Agency Budget Request

2025 – 2027 Biennium

September 16, 2024

Table of Contents

Cover Letter	3
Description	4
Mission	5
Goals	6
Performance Measures	7
Organization Chart	8
Agency Total by Fund Source	9
Agency Total by Program	10
Agency Total by Decision Item (DIN)	11
Decision Items	12

STATE OF WISCONSIN
JUDICIAL COMMISSION

Suite 700, Tenney Building
110 East Main Street
Madison, Wisconsin 53703-3328



Jeremiah C. Van Hecke
Executive Director

Phone: (608) 266-7637
Fax: (608) 266-8647

MEMORANDUM

DATE: September 16, 2024
TO: Michael Schmidt
FROM: Jeremiah C. Van Hecke
RE: 2025-2027 Budget Request

Enclosed is a copy of the Judicial Commission's 2025-2027 budget request.

Thank you.

A handwritten signature in black ink, appearing to read "J. Van Hecke".

cc: Legislative Fiscal Bureau

AGENCY DESCRIPTION

The Judicial Commission investigates and prosecutes allegations of misconduct or disability on the part of Wisconsin judges and court commissioners. A judge's or court commissioner's conduct is measured primarily by Supreme Court Rule, Chapter 60, Wisconsin Code of Judicial Conduct. The nine-member Commission consists of five members who are appointed by the Governor with the advice and consent of the Senate and four members who are appointed by the Supreme Court.

The Commission, through its Executive Director, receives and responds to numerous inquiries from judges, attorneys, court commissioners and other citizens on the issue of judicial conduct. The Commission does not issue advisory opinions, but the Executive Director responds to requests for informal guidance by judges and court commissioners on the propriety of contemplated conduct. In 2022 and 2023, a total of 355 requests for informal guidance were received and responded to by the Executive Director. The Commission encourages such communications between its staff and judges, court commissioners, and the public.

MISSION

The mission of the Judicial Commission is to hold Wisconsin judges and court commissioners accountable for violations of the Wisconsin Code of Judicial Conduct while maintaining the independence of the judiciary, which is necessary for the proper functioning of a democracy. The Commission also strives to strengthen the Wisconsin judiciary and the public's confidence in it by creating a greater awareness, on the part of both the judiciary and the public, of what constitutes proper and improper judicial conduct.

PROGRAMS, GOALS, OBJECTIVES, AND ACTIVITIES

Program 1: Judicial Conduct

Goal: Respond in an appropriate and timely manner to increasing caseload with minimal staff.

Goal: Participate in judicial education programs by providing ethics presentations to reduce the incidence of judicial misconduct.

Goal: Increase awareness among judges and court commissioners concerning ethical issues by providing informal guidance.

PERFORMANCE MEASURES

2023 AND 2024 GOALS AND ACTUALS

Prog. No.	Performance Measure	Goal 2023	Actual 2023	Goal 2024	Actual 2024
1	Complaints (and other initial inquiries) received	500	664	500	332
1	Investigations pending	25	19	25	14
1	Requests for informal guidance	250	161	250	91

Note: Actuals for 2024 are based on calendar year through July 1, 2024.

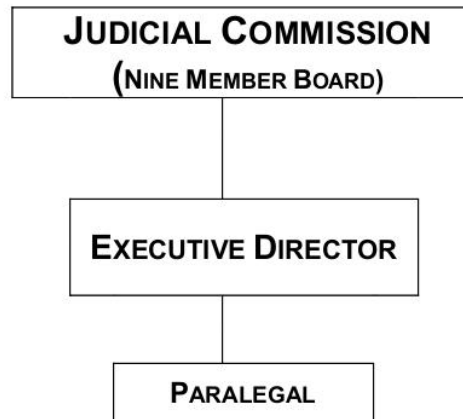
2025, 2026, AND 2027 GOALS

Prog. No.	Performance Measure	Goal 2025	Goal 2026	Goal 2027
1	Complaints (and other initial inquiries) received	500	500	500
1	Investigations pending	25	25	25
1	Requests for informal guidance	250	250	250

Note: Based on calendar year.

STATE OF WISCONSIN JUDICIAL COMMISSION

ORGANIZATIONAL CHART



Agency Total by Fund Source

Judicial Commission

2527 Biennial Budget

		ANNUAL SUMMARY						BIENNIAL SUMMARY			
Source of Funds		Prior Year Total	Adjusted Base	1st Year Total	2nd Year Total	1st Year FTE	2nd Year FTE	Base Year Doubled (BYD)	Biennial Request	Change From (BYD)	Change From BYD %
GPR	S	\$332,274	\$363,500	\$379,300	\$379,600	2.00	2.00	\$727,000	\$758,900	\$31,900	4.40%
Total		\$332,274	\$363,500	\$379,300	\$379,600	2.00	2.00	\$727,000	\$758,900	\$31,900	4.40%
Grand Total		\$332,274	\$363,500	\$379,300	\$379,600	2.00	2.00	\$727,000	\$758,900	\$31,900	4.40%

Agency Total by Program

Judicial Commission

2527 Biennial Budget

		ANNUAL SUMMARY					BIENNIAL SUMMARY				
Source of Funds	Prior Year Total	Adjusted Base	1st Year Total	2nd Year Total	1st Year FTE	2nd Year FTE	Base Year Doubled (BYD)	Biennial Request	Change From (BYD)	Change From BYD %	
01 Judicial conduct											
Non Federal											
GPR		\$332,274	\$363,500	\$379,300	\$379,600	2.00	2.00	\$727,000	\$758,900	\$31,900	4.39%
	S	\$332,274	\$363,500	\$379,300	\$379,600	2.00	2.00	\$727,000	\$758,900	\$31,900	4.39%
Total - Non Federal		\$332,274	\$363,500	\$379,300	\$379,600	2.00	2.00	\$727,000	\$758,900	\$31,900	4.39%
	S	\$332,274	\$363,500	\$379,300	\$379,600	2.00	2.00	\$727,000	\$758,900	\$31,900	4.39%
PGM 01 Total		\$332,274	\$363,500	\$379,300	\$379,600	2.00	2.00	\$727,000	\$758,900	\$31,900	4.39%
GPR		\$332,274	\$363,500	\$379,300	\$379,600	2.00	2.00	\$727,000	\$758,900	\$31,900	4.39%
	S	\$332,274	\$363,500	\$379,300	\$379,600	2.00	2.00	\$727,000	\$758,900	\$31,900	4.39%
TOTAL 01		\$332,274	\$363,500	\$379,300	\$379,600	2.00	2.00	\$727,000	\$758,900	\$31,900	4.39%
	S	\$332,274	\$363,500	\$379,300	\$379,600	2.00	2.00	\$727,000	\$758,900	\$31,900	4.39%
AGENCY TOTAL		\$332,274	\$363,500	\$379,300	\$379,600	2.00	2.00	\$727,000	\$758,900	\$31,900	4.39%

Agency Total by Decision Item

Judicial Commission

2527 Biennial Budget

Decision Item	1st Year Total	2nd Year Total	1st Year FTE	2nd Year FTE
2000 Adjusted Base Funding Level	\$363,500	\$363,500	2.00	2.00
3003 Full Funding of Continuing Position Salaries and Fringe Benefits	\$17,400	\$17,400	0.00	0.00
3010 Full Funding of Lease and Directed Moves Costs	(\$1,600)	(\$1,300)	0.00	0.00
TOTAL	\$379,300	\$379,600	2.00	2.00

Decision Item (DIN) - 2000

Decision Item (DIN) Title - Adjusted Base Funding Level

NARRATIVE

Adjusted Base Funding Level

Decision Item by Line

2527 Biennial Budget

DEPARTMENT	CODES	TITLES
	665	Judicial Commission

DECISION ITEM	CODES	TITLES
	2000	Adjusted Base Funding Level

	Expenditure Items	1st Year Cost	2nd Year Cost
01	Permanent Position Salaries	\$167,400	\$167,400
02	Turnover	\$0	\$0
03	Project Position Salaries	\$0	\$0
04	LTE/Misc. Salaries	\$0	\$0
05	Fringe Benefits	\$81,200	\$81,200
06	Supplies and Services	\$114,400	\$114,400
07	Permanent Property	\$500	\$500
08	Unallotted Reserve	\$0	\$0
09	Aids to Individuals & Organizations	\$0	\$0
10	Local Assistance	\$0	\$0
11	One-time Financing	\$0	\$0
12	Debt service	\$0	\$0
13		\$0	\$0
14		\$0	\$0
15		\$0	\$0
16		\$0	\$0
17	TOTAL	\$363,500	\$363,500
18	Project Positions Authorized	0.00	0.00
19	Classified Positions Authorized	0.00	0.00
20	Unclassified Positions Authorized	2.00	2.00

Decision Item by Numeric

2527 Biennial Budget

Judicial Commission

Program	Decision Item/Numeric	1st Year Total	2nd Year Total	1st Year FTE	2nd Year FTE
	2000 Adjusted Base Funding Level				
01	Judicial conduct				
	01 General program operations	\$347,300	\$347,300	2.00	2.00
	04 Contractual agreements	\$16,200	\$16,200	0.00	0.00
	Judicial conduct Sub Total	\$363,500	\$363,500	2.00	2.00
	Adjusted Base Funding Level Sub Total	\$363,500	\$363,500	2.00	2.00
	Agency Total	\$363,500	\$363,500	2.00	2.00

Decision Item by Fund Source

2527 Biennial Budget

Judicial Commission

Decision Item/Source of Funds		1st Year Total	2nd Year Total	1st Year FTE	2nd Year FTE
2000 Adjusted Base Funding Level					
GPR	S	\$363,500	\$363,500	2.00	2.00
Adjusted Base Funding Level Total		\$363,500	\$363,500	2.00	2.00
Agency Total		\$363,500	\$363,500	2.00	2.00

Decision Item (DIN) - 3003

Decision Item (DIN) Title - Full Funding of Continuing Position Salaries and Fringe Benefits

NARRATIVE

Standard Budget Adjustment - Full Funding of Continuing Position Salaries and Fringe Benefits

Decision Item by Line

2527 Biennial Budget

DEPARTMENT	CODES	TITLES
	665	Judicial Commission

DECISION ITEM	CODES	TITLES
	3003	Full Funding of Continuing Position Salaries and Fringe Benefits

	Expenditure Items	1st Year Cost	2nd Year Cost
01	Permanent Position Salaries	\$10,200	\$10,200
02	Turnover	\$0	\$0
03	Project Position Salaries	\$0	\$0
04	LTE/Misc. Salaries	\$0	\$0
05	Fringe Benefits	\$7,200	\$7,200
06	Supplies and Services	\$0	\$0
07	Permanent Property	\$0	\$0
08	Unallotted Reserve	\$0	\$0
09	Aids to Individuals & Organizations	\$0	\$0
10	Local Assistance	\$0	\$0
11	One-time Financing	\$0	\$0
12	Debt service	\$0	\$0
13		\$0	\$0
14		\$0	\$0
15		\$0	\$0
16		\$0	\$0
17	TOTAL	\$17,400	\$17,400
18	Project Positions Authorized	0.00	0.00
19	Classified Positions Authorized	0.00	0.00
20	Unclassified Positions Authorized	0.00	0.00

Decision Item by Numeric

2527 Biennial Budget

Judicial Commission

Program	Decision Item/Numeric	1st Year Total	2nd Year Total	1st Year FTE	2nd Year FTE
	3003 Full Funding of Continuing Position Salaries and Fringe Benefits				
01	Judicial conduct				
	01 General program operations	\$17,400	\$17,400	0.00	0.00
	Judicial conduct Sub Total	\$17,400	\$17,400	0.00	0.00
	Full Funding of Continuing Position Salaries and Fringe Benefits Sub Total	\$17,400	\$17,400	0.00	0.00
	Agency Total	\$17,400	\$17,400	0.00	0.00

Decision Item by Fund Source

2527 Biennial Budget

Judicial Commission

Decision Item/Source of Funds		1st Year Total	2nd Year Total	1st Year FTE	2nd Year FTE
3003 Full Funding of Continuing Position Salaries and Fringe Benefits					
GPR	S	\$17,400	\$17,400	0.00	0.00
Full Funding of Continuing Position Salaries and Fringe Benefits Total		\$17,400	\$17,400	0.00	0.00
Agency Total		\$17,400	\$17,400	0.00	0.00

Decision Item (DIN) - 3010

Decision Item (DIN) Title - Full Funding of Lease and Directed Moves Costs

NARRATIVE

Standard Budget Adjustment - Full Funding of Lease and Directed Moves Costs

Decision Item by Line

2527 Biennial Budget

DEPARTMENT	CODES	TITLES
	665	Judicial Commission

DECISION ITEM	CODES	TITLES
	3010	Full Funding of Lease and Directed Moves Costs

	Expenditure Items	1st Year Cost	2nd Year Cost
01	Permanent Position Salaries	\$0	\$0
02	Turnover	\$0	\$0
03	Project Position Salaries	\$0	\$0
04	LTE/Misc. Salaries	\$0	\$0
05	Fringe Benefits	\$0	\$0
06	Supplies and Services	(\$1,600)	(\$1,300)
07	Permanent Property	\$0	\$0
08	Unallotted Reserve	\$0	\$0
09	Aids to Individuals & Organizations	\$0	\$0
10	Local Assistance	\$0	\$0
11	One-time Financing	\$0	\$0
12	Debt service	\$0	\$0
13		\$0	\$0
14		\$0	\$0
15		\$0	\$0
16		\$0	\$0
17	TOTAL	(\$1,600)	(\$1,300)
18	Project Positions Authorized	0.00	0.00
19	Classified Positions Authorized	0.00	0.00
20	Unclassified Positions Authorized	0.00	0.00

Decision Item by Numeric

2527 Biennial Budget

Judicial Commission

Program	Decision Item/Numeric	1st Year Total	2nd Year Total	1st Year FTE	2nd Year FTE
	3010 Full Funding of Lease and Directed Moves Costs				
01	Judicial conduct				
	01 General program operations	(\$1,600)	(\$1,300)	0.00	0.00
	Judicial conduct Sub Total	(\$1,600)	(\$1,300)	0.00	0.00
	Full Funding of Lease and Directed Moves Costs Sub Total	(\$1,600)	(\$1,300)	0.00	0.00
	Agency Total	(\$1,600)	(\$1,300)	0.00	0.00

Decision Item by Fund Source

2527 Biennial Budget

Judicial Commission

Decision Item/Source of Funds		1st Year Total	2nd Year Total	1st Year FTE	2nd Year FTE
3010 Full Funding of Lease and Directed Moves Costs					
GPR	S	(\$1,600)	(\$1,300)	0.00	0.00
Full Funding of Lease and Directed Moves Costs Total		(\$1,600)	(\$1,300)	0.00	0.00
Agency Total		(\$1,600)	(\$1,300)	0.00	0.00