



# **WISCONSIN IS WORKING**

Governor Walker's 2017-2019 Executive Budget



# WISCONSIN IS WORKING

- UNEMPLOYMENT RATE IS AT A 15 YEAR LOW
- 2016 PRODUCED THE HIGHEST LEVEL OF EMPLOYMENT IN STATE HISTORY
- 2015/2016 WERE THE BEST BACK-TO-BACK YEARS OF AVERAGE WEEKLY WAGE GROWTH IN OVER A DECADE
- TOP TEN IN THE NATION FOR LABOR FORCE PARTICIPATION RATE

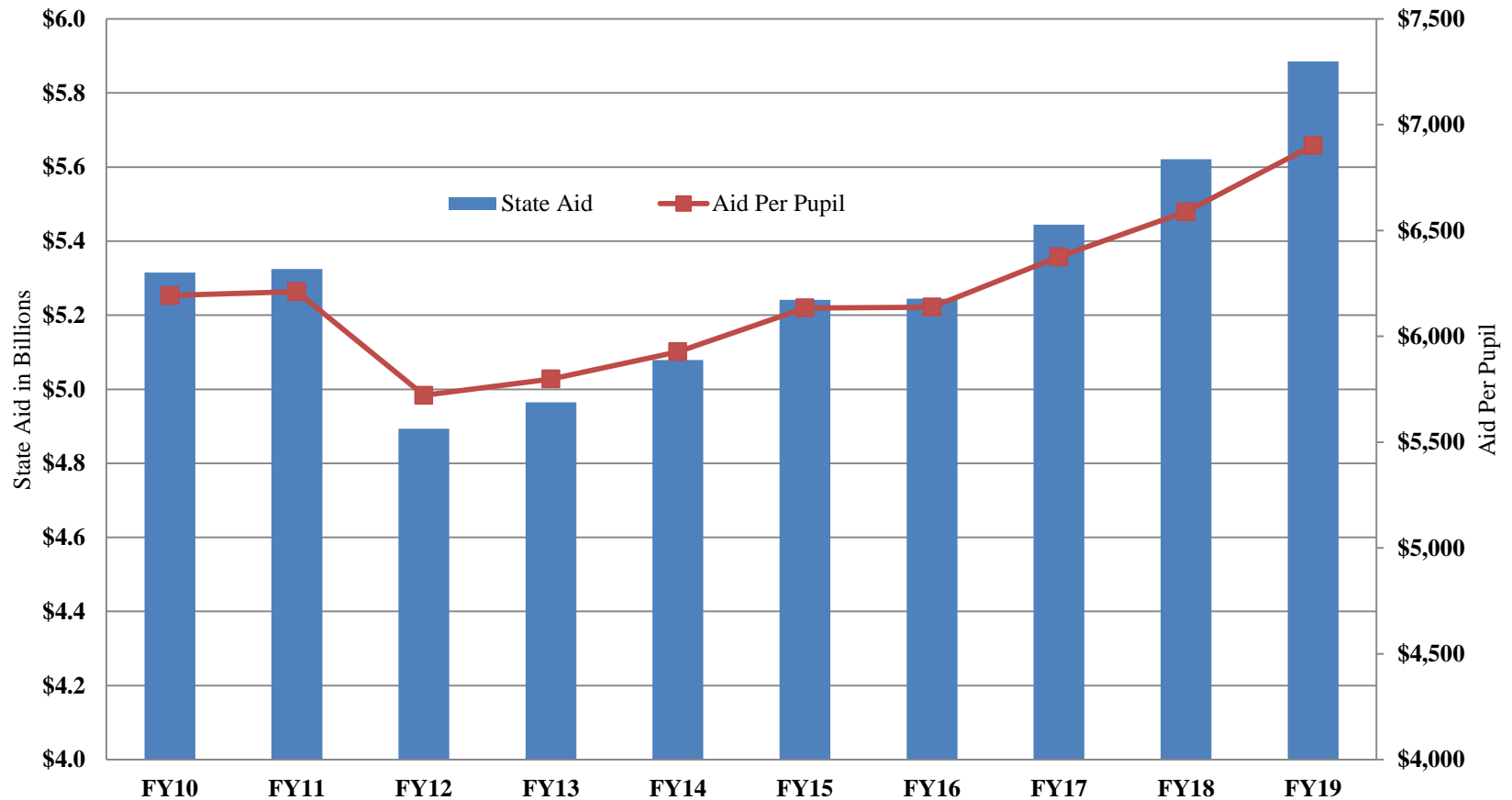


# STUDENT SUCCESS

- STATE AID FOR SCHOOLS AT AN ALL-TIME HIGH
- LARGEST INCREASE IN OVER A DECADE
- SIGNIFICANT INCREASES FOR RURAL SCHOOLS
- MORE THAN \$100 MILLION MORE INVESTED INTO UW SYSTEM
- TUITION FOR RESIDENT UNDERGRADS REDUCED BY 5 PERCENT
- WISCONSIN NEEDS-BASED FINANCIAL AID GRANTS INCREASE TO A RECORD HIGH



# K-12 SCHOOL FUNDING HIGHEST EVER



\*Total general and categorical aids.

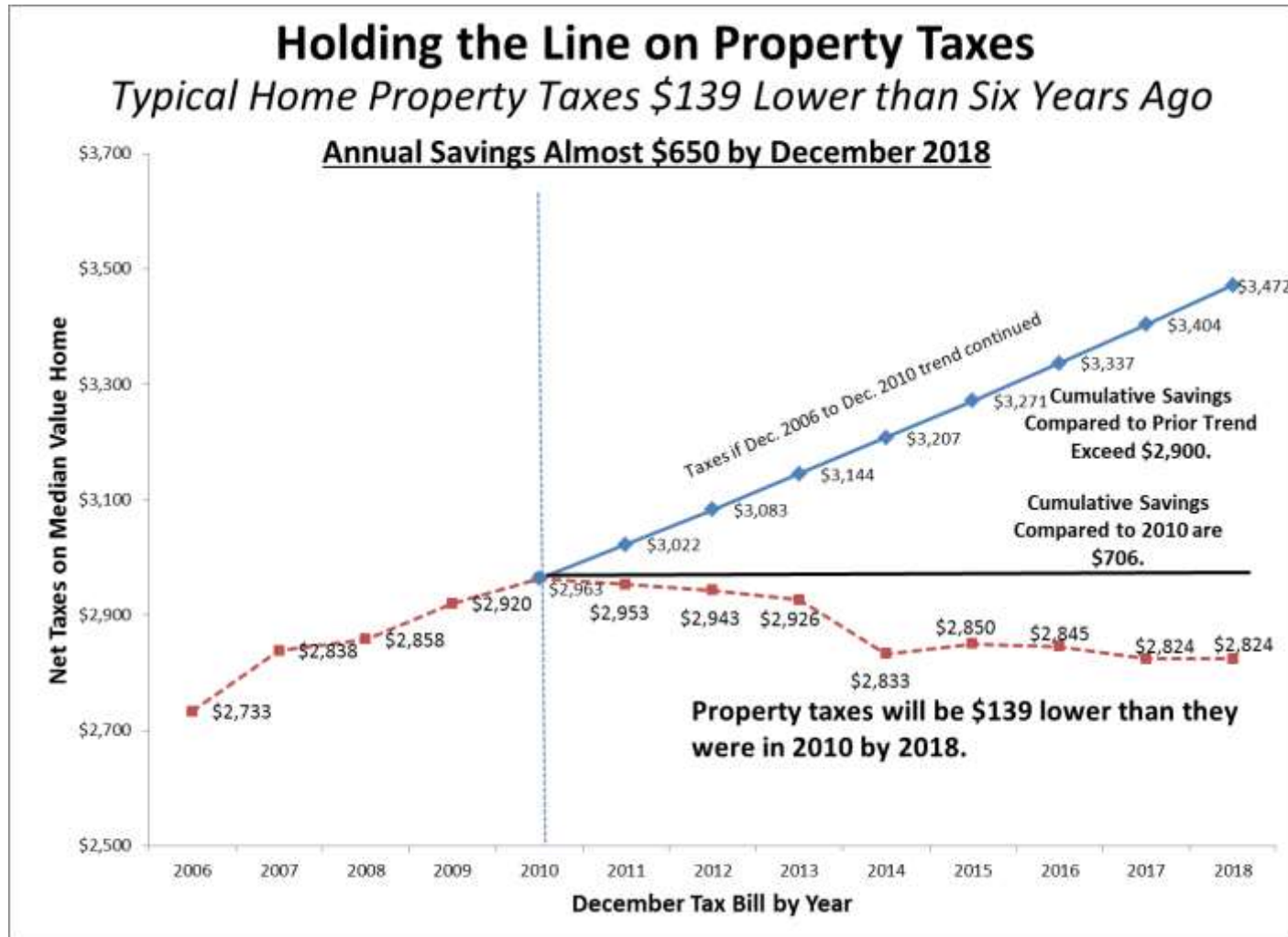


# ACCOUNTABLE GOVERNMENT

- KEEPING THE PROMISE TO HOLD THE LINE ON PROPERTY TAXES
- CUTTING INCOME TAXES
- SIGNIFICANT INVESTMENTS IN TRANSPORTATION
- MAJOR ACTIVE ROAD PROJECTS ON SCHEDULE



# PROPERTY TAX SAVINGS ADD UP










# INCOME TAX SAVINGS ADD UP

## MEDIAN INCOME FAMILY OF FOUR SAVES \$1,542 OVER SIX YEARS

Median income family	TY13 reduction	TY14 reduction	TY15 reduction	TY16 reduction	TY17 reduction	TY18 reduction	Six-year total
Rate cuts effective in TY13	-\$186	-\$187	-\$185	-\$184	-\$184	-\$182	-\$1,108
Rate cuts effective in TY14	--	-\$57	-\$59	-\$59	-\$59	-\$61	-\$295
Rate cuts effective in TY17	--	--	--	--	-\$69	-\$70	-\$139
<b>Total</b>	-\$186	-\$244	-\$244	-\$243	-\$312	-\$313	-\$1,542
<i>Percent Reduction</i>	-4.8%	-6.2%	-6.3%	-6.3%	-8.0%	-8.1%	

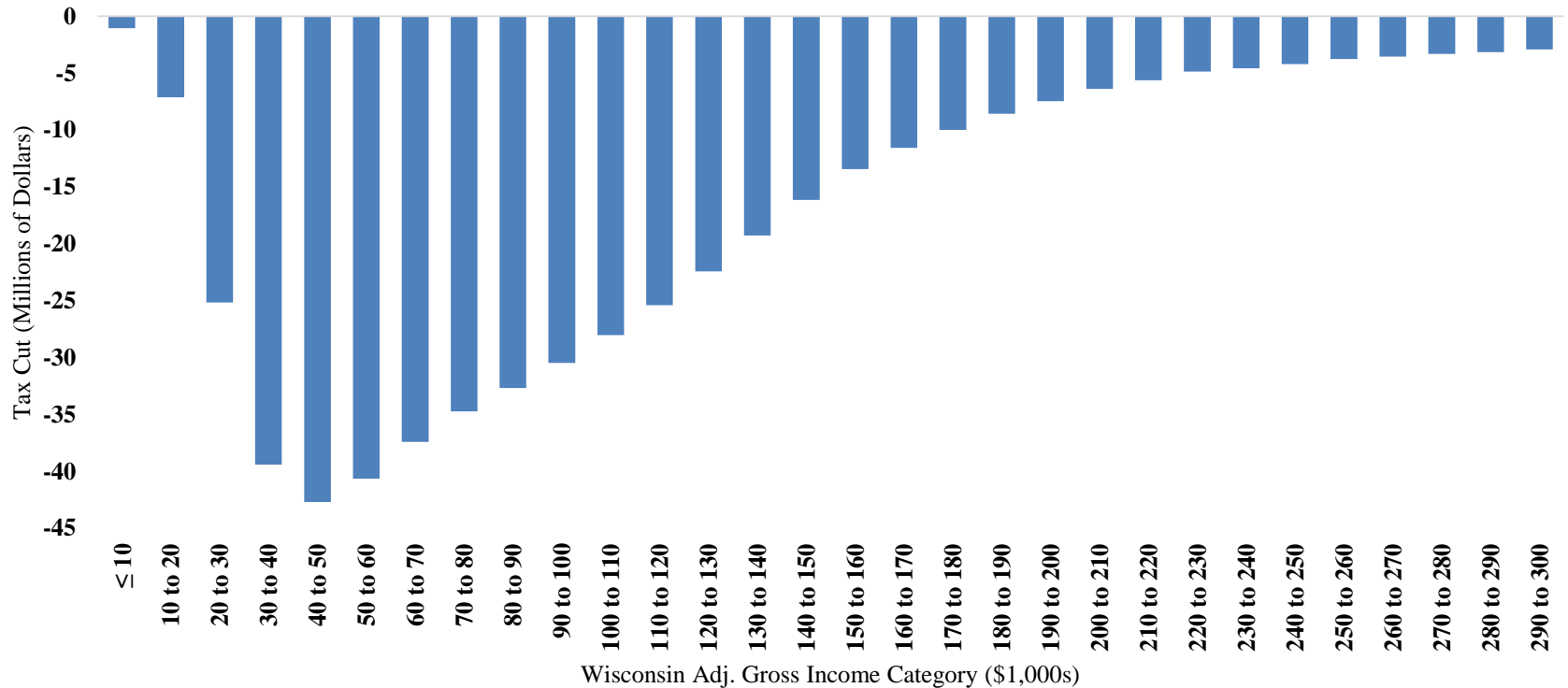
Tax Rate Reduction, TY12-TY17					
Rate	Bottom Rate	2nd Rate	3rd Rate	4th Rate	Top Rate
Before	4.60%	6.15%	6.50%	6.75%	7.75%
					
After	3.90%	5.74%	6.27%	7.65%	





# INCOME TAX CUTS FOCUSED ON THE MIDDLE CLASS

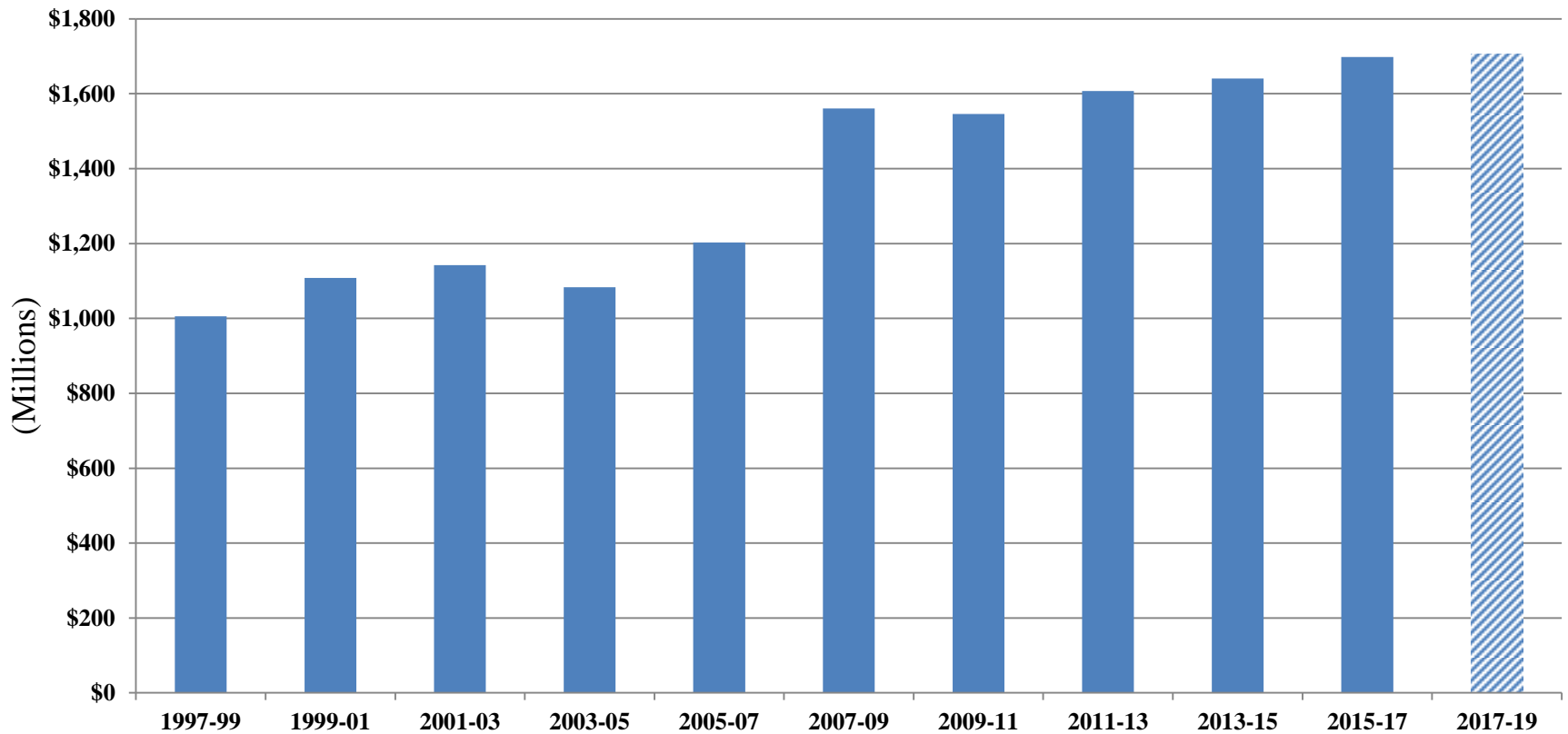
Tax Relief by Income Class in 2018, All Filers  
Effect of 2013, 2014, & 2017 Rate Cuts





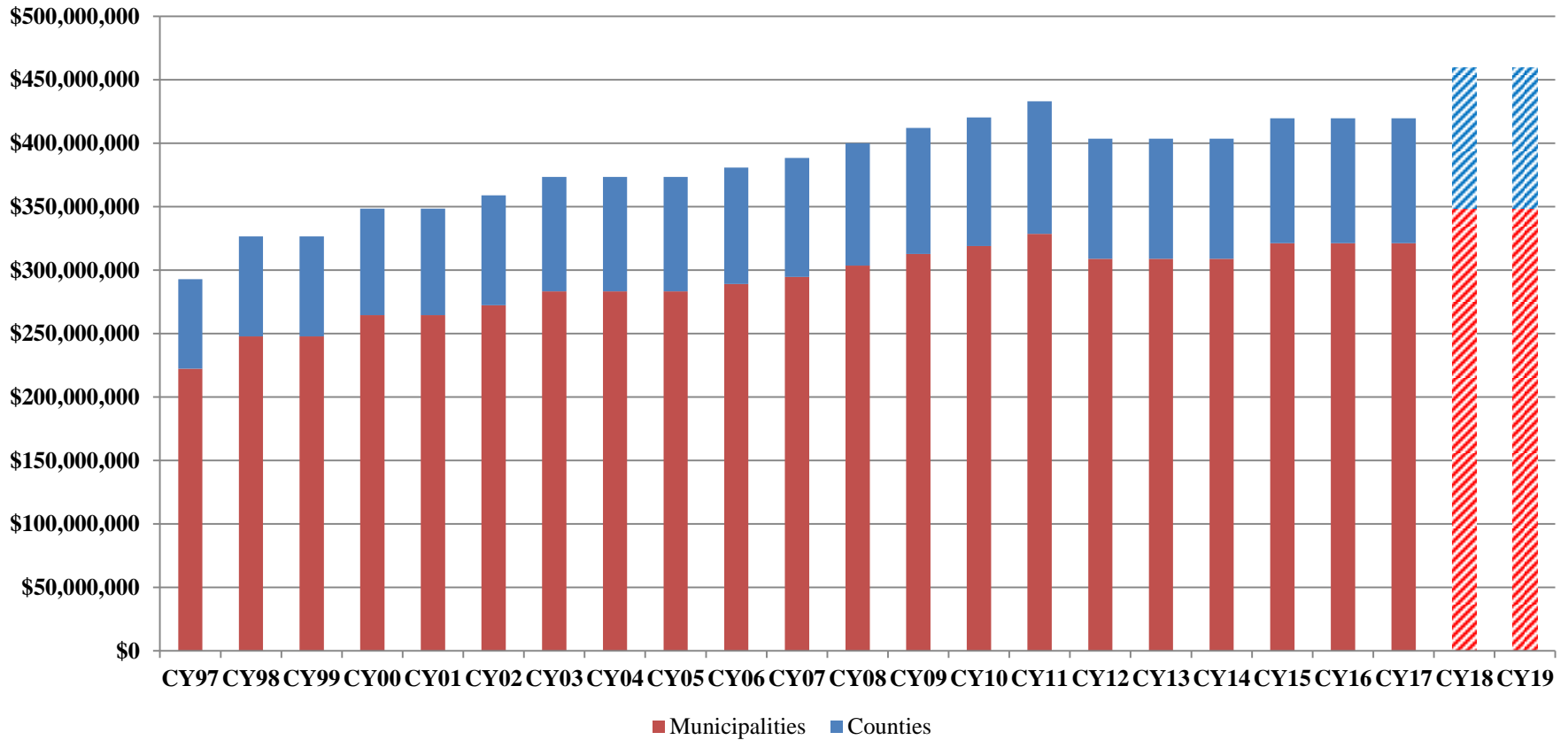


# STATE HIGHWAY REHABILITATION HIGHEST LEVEL EVER





# LOCAL GENERAL TRANSPORTATION AIDS HIGHEST EVER





# REWARDING WORK

- CHANGES TO THE FOODSHARE EMPLOYMENT AND TRAINING PROGRAM ARE ESTIMATED TO GIVE AS MANY AS 80,000 WISCONSINITES THE OPPORTUNITY TO PARTICIPATE IN EMPLOYMENT AND TRAINING
- INCREASING AND EXPANDING THE EARNED INCOME TAX CREDIT TO BENEFIT MORE THAN 140,000 INDIVIDUAL FILERS
- ELIMINATE CHILD CARE CLIFF TO END THIS DISINCENTIVE TO WORK
- NUMEROUS EDUCATION PROGRAMS TO IMPROVE ATTAINMENT
- ADDITIONAL INVESTMENTS IN TECHNICAL COLLEGES AND WORKER TRAINING PROGRAMS



# 131,000 FAMILIES WITH ONE DEPENDENT TO SEE EITC NEARLY TRIPLE

