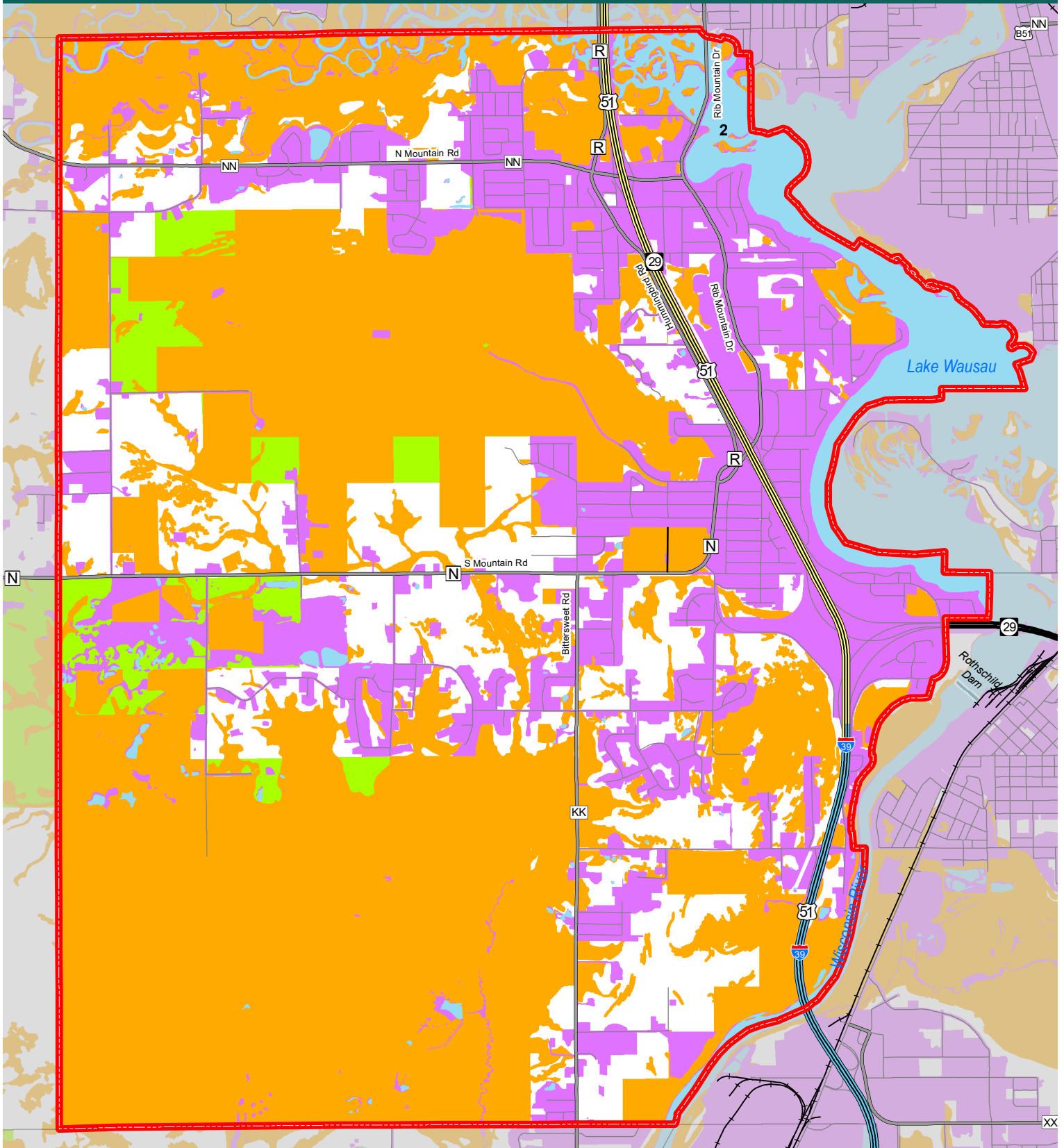


RIB MOUNTAIN EXISTING DEVELOPMENT AND DEVELOPMENT LIMITATIONS MAP 12



- Town Boundary
- Railroad
- Transportation**
- Interstate
- U.S. Highways
- State Highways
- County Highways
- Local Roads
- Water
- Development Limitations
- Existing Development
- Rib Mountain State Park & 9 Mile Recreation Area Possible Expansion

*Development Limitations includes: Wetlands, Floodplain, Steep Slopes, MFL, Public Owned Lands, and Non-Metallic Mine Sites*



Source: WI DNR, Wis DOT, NCWRPC  
 This map is neither a legally recorded map nor a survey of the actual boundary of any property depicted. This drawing is a compilation of records, information and data used for reference purposes only. NCWRPC is not responsible for any inaccuracies herein contained.

Printed On: 10/17/2022



**North Central Wisconsin Regional Planning Commission**

715-849-5510 - staff@ncwrpc.org - www.ncwrpc.org