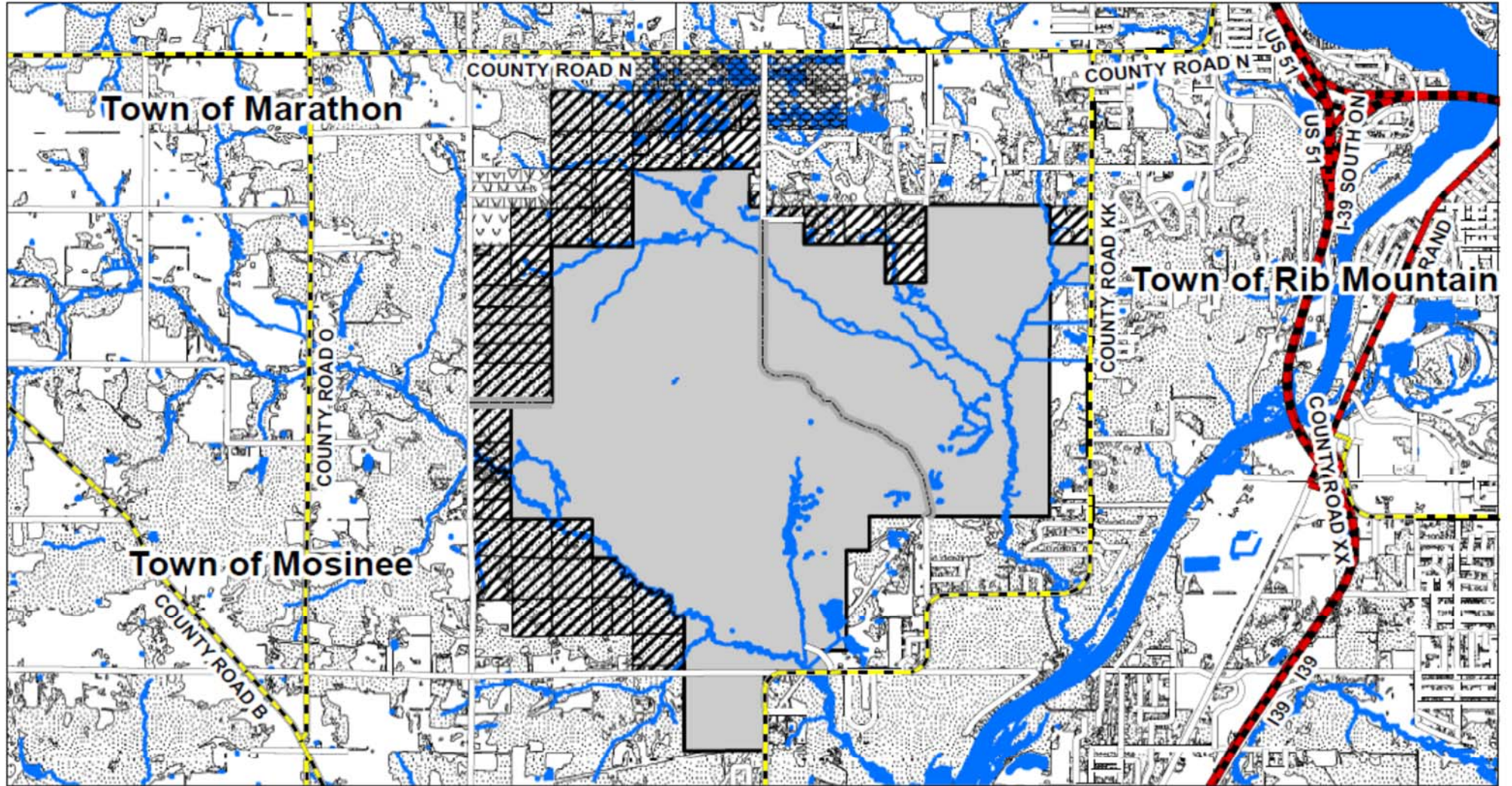


Marathon County Forest: Nine Mile Forest Unit Potential Acquisition Zone for 2021-2035



Legend

- Current Ownership
- Potential Acquisition Zone (2021-2035)
- Potential Connector Acquisition (Rib Mt. State Park/9 Mile)
- No Purchase Zone (Developed/Agriculture)
- Wooded Areas
- Lakes/Ponds
- Streams/Rivers
- County Forest Roads
- Town Roads
- County Roads
- State & US Highways

Total Potential Acquisition Acreage (w/ Rib Mt. Connector): 1,834 acres 02/26/2020
1000-15