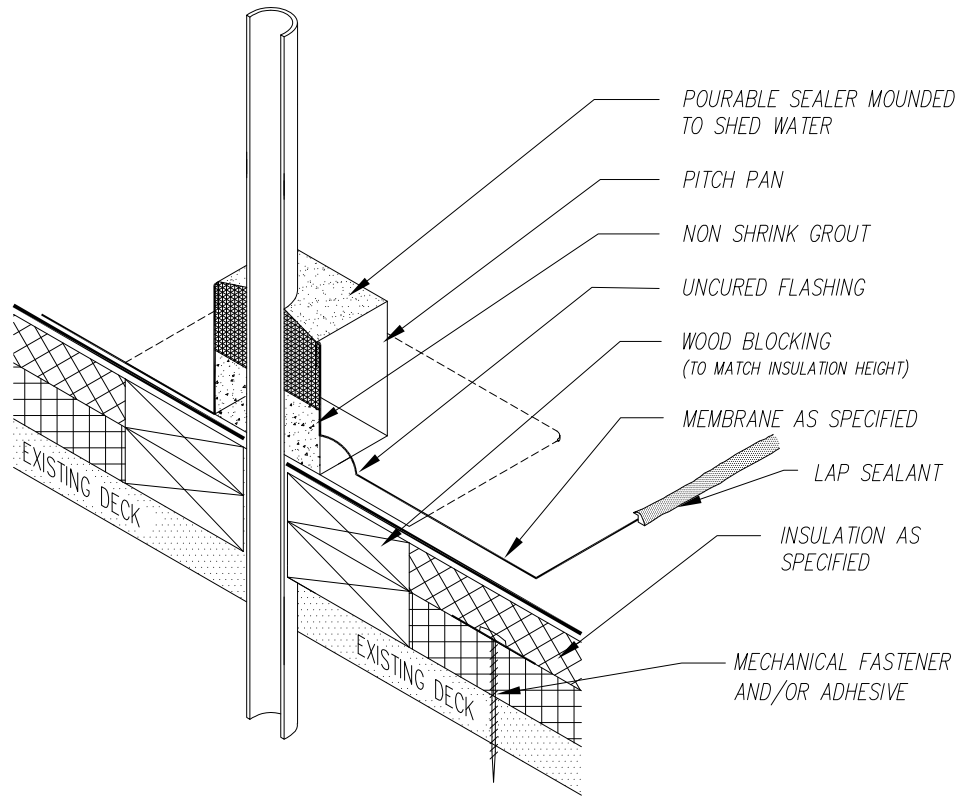


A 200 Fully Adhered EPDM Construction Details

- A2.1 Pitch Pan Detail
- A2.2 Hi Temp Pipe Detail
- A2.3 Class B Vent Detail
- A2.4 Vent Stack Detail
- A2.5 Roof Drain Detail
- A2.6 Fascia Detail
- A2.7 Multiple Fascia Detail
- A2.8 Snap On Fascia Detail
- A2.9 Coping Detail
- A2.10 Butt End @ Coping Detail
- A2.11 Reglet & 2 PC. Counter flashing Detail
- A2.12 Surface Mount Counter flashing Detail
- A2.13 Expansion Joint Detail
- A2.14 Wall Exp. Joint Detail
- A2.15 Roof Curb Detail
- A2.16 Roof Hatch Detail
- A2.17 Wood Build Sleeper Curb Detail
- A2.18 Prefab. Metal Sleeper Curb Detail
- A2.19 Equipment Support w/Pipe Chase Detail
- A2.20 Multiple Pipe Support Detail
- A2.21 Louver Flashing Min. Height Detail
- A2.22 Window Flashing Min. Height Detail
- A2.23 Door Flashing Min. Height Detail
- A2.24 Wood Build Pipe Support Detail
- A2.25 Iron Build Pipe Support Detail
- A2.26 Wood Build Duct Support Detail
- A2.27 Adjustable Duct Support Detail
- A2.28 Equipment Support Stand Detail

**Click for DFD Master
Specifications**

http://www.doa.state.wi.us/dsf/masterspec_view_new.asp?catid=37&locid=4



1
A2.1

PITCH PAN DETAIL

NO SCALE:

SEE SECTION 07 53 23
FOR INSTALLATION INSTRUCTIONS

Pressure Treated Plywood and Lumber: These products shall not be specified or provided for use in roofing projects as a substrate material



State of Wisconsin
Department of Administration
Division of Facilities Development

TYPICAL DFD STANDARD
FULLY ADHERED EPDM DETAIL

Scale NO

DFD Number
Set Type RD.
Date Issued

Agency / Institution:

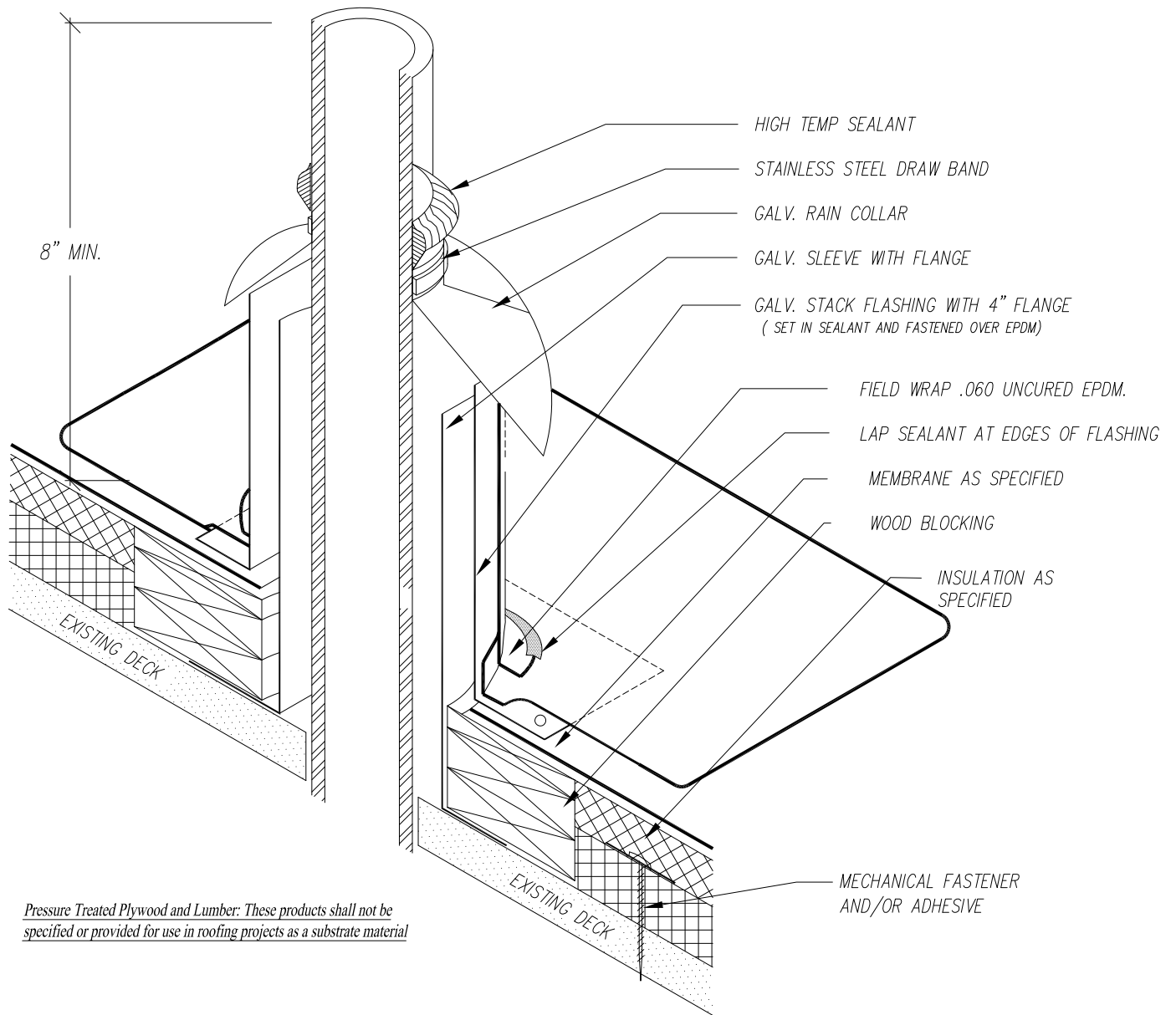
Sheet Title:

PITCH PAN DETAIL

Rev-01/20/2014

Sheet Number

A2.1




Pressure Treated Plywood and Lumber: These products shall not be specified or provided for use in roofing projects as a substrate material

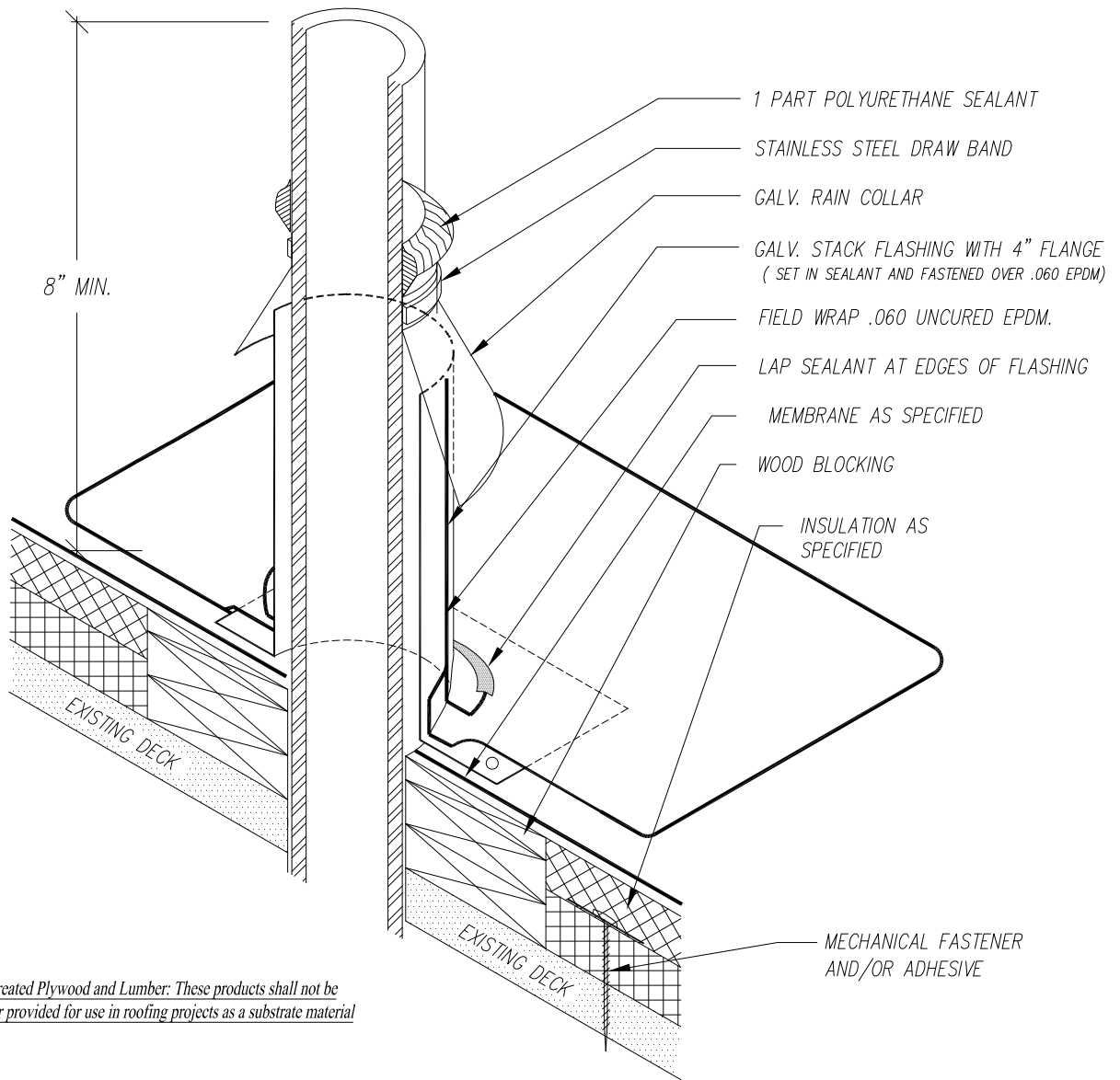
1
A2.2

HIGH TEMP. PIPE DETAIL

NO SCALE:

**SEE SECTION 07 53 23
FOR INSTALLATION INSTRUCTIONS**

 <p>State of Wisconsin Department of Administration Division of Facilities Development</p>	<p>TYPICAL DFD STANDARD FULLY ADHERED EPDM DETAIL</p>	Scale	NO
		DFD Number	
		Set Type	RD.
Agency / Institution:	Sheet Title:	Date Issued	
	HIGH TEMP PIPE DETAIL	Rev-01/20/2014	Sheet Number A2.2




Pressure Treated Plywood and Lumber: These products shall not be specified or provided for use in roofing projects as a substrate material

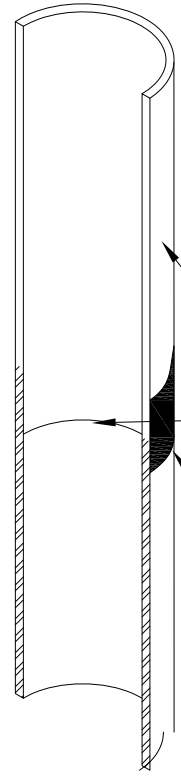
1
A2.3

CLASS B VENT PIPE DETAIL

NO SCALE:

SEE SECTION 07 53 23
FOR INSTALLATION INSTRUCTIONS

 <p>State of Wisconsin Department of Administration Division of Facilities Development</p>	<p>TYPICAL DFD STANDARD FULLY ADHERED EPDM DETAIL</p>	Scale	NO
		DFD Number	
Agency / Institution:	Sheet Title:	Set Type	RD.
		Date Issued	
	CLASS B VENT DETAIL	Rev-01/20/2014	Sheet Number A2.3

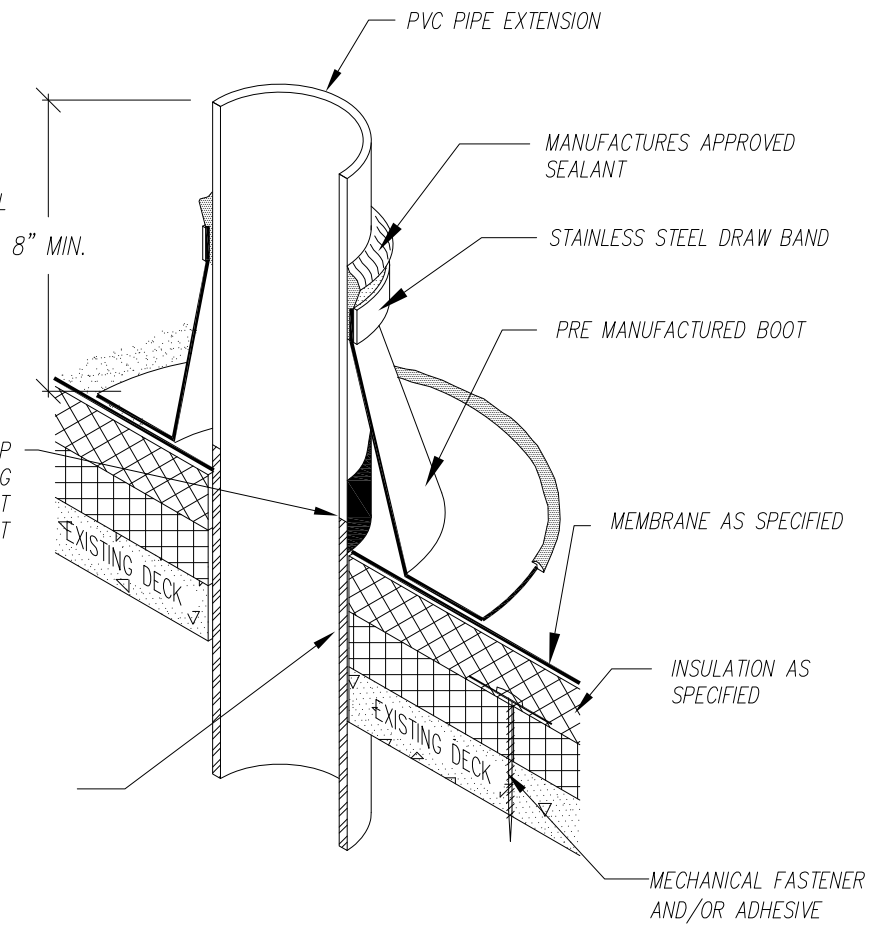


PVC EXTENSION

INSTALL WATER STOP SEALANT BETWEEN EXISTING PIPE AND NEW PIPE AT JOINT

PEEL AND STICK EPDM. BUTYL TAPE COVER STRIP

NOTE:
 1: CONTRACTOR TO RAISE EXISTING VENT STACK IF NEEDED TO REACH A 8" MIN. HEIGHT
 2: MINIMUM PIPE EXTENSION SHALL BE 4"



PVC PIPE EXTENSION

MANUFACTURES APPROVED SEALANT

STAINLESS STEEL DRAW BAND

PRE MANUFACTURED BOOT

MEMBRANE AS SPECIFIED

INSULATION AS SPECIFIED

MECHANICAL FASTENER AND/OR ADHESIVE

8" MIN.

INSTALL WATER STOP SEALANT BETWEEN EXISTING PIPE AND NEW PIPE AT JOINT

EXISTING DECK

EXISTING DECK

EXISTING PIPE

1
A2.4

VENT STACK DETAIL

NO SCALE:

SEE SECTION 07 53 23
FOR INSTALLATION INSTRUCTIONS



State of Wisconsin
 Department of Administration
 Division of Facilities Development

Agency / Institution:

TYPICAL DFD STANDARD
 FULLY ADHERED EPDM DETAIL

Sheet Title:

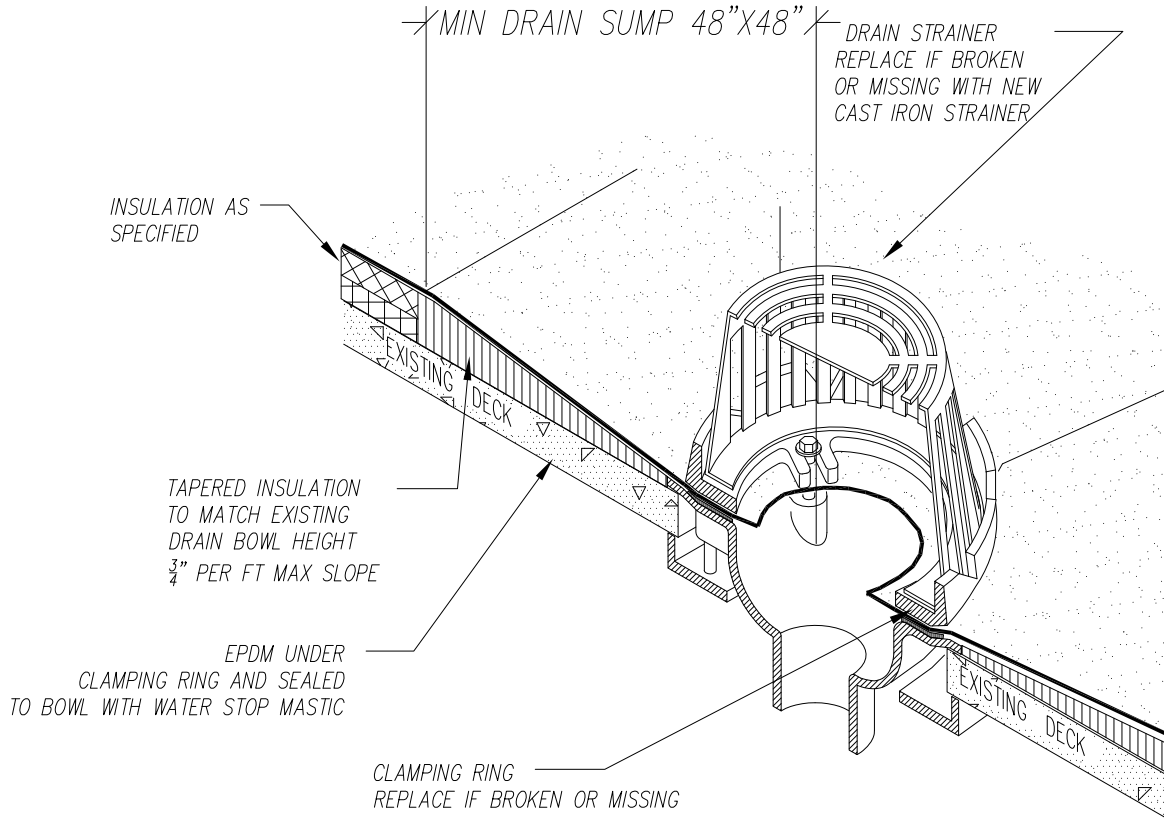
VENT STACK DETAIL Rev-01/20/2014

Scale	NO
DFD Number	
Set Type	RD.
Date Issued	

Sheet Number **A2.4**

NOTE:

1: CONTRACTOR MAY HAVE TO CUT OUT EXISTING DRAIN SUMP TO ALLOW FOR INSTALLATION OF NEW INSULATION AND DRAIN SUMP



1
A2.5

ROOF DRAIN DETAIL

NO SCALE:

SEE SECTION 07 53 23
FOR INSTALLATION INSTRUCTIONS



State of Wisconsin
Department of Administration
Division of Facilities Development

TYPICAL DFD STANDARD
FULLY ADHERED EPDM DETAIL

Scale NO

DFD Number
Set Type RD.
Date Issued

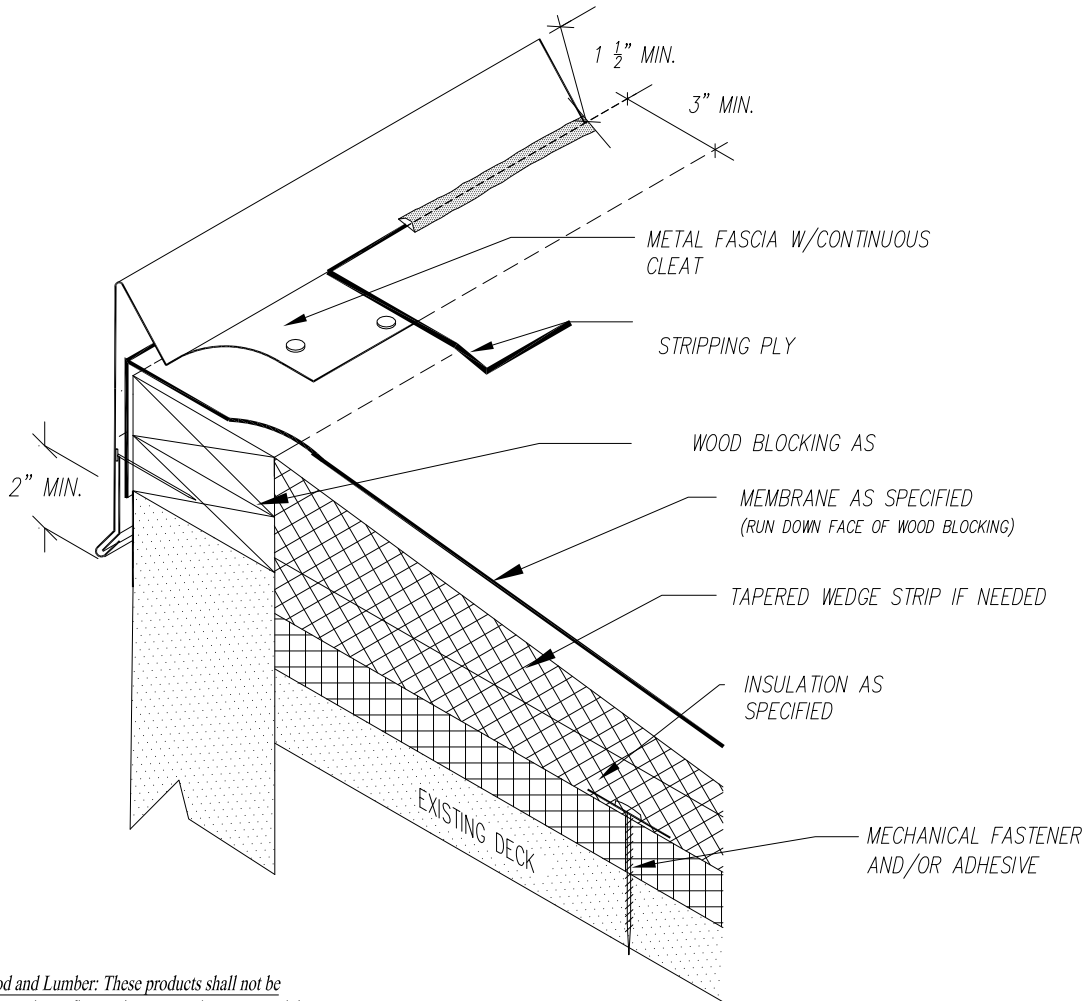
Agency / Institution:

Sheet Title:

ROOF DRAIN DETAIL Rev-01/20/2014

Sheet Number

A2.5



Pressure Treated Plywood and Lumber: These products shall not be specified or provided for use in roofing projects as a substrate material

1
A2.6

FASCIA DETAIL

NO SCALE:

SEE SECTION 07 53 23
FOR INSTALLATION INSTRUCTIONS



State of Wisconsin
Department of Administration
Division of Facilities Development

TYPICAL DFD STANDARD
FULLY ADHERED EPDM DETAIL

Scale	NO
DFD Number	
Set Type	RD.
Date Issued	

Agency / Institution:

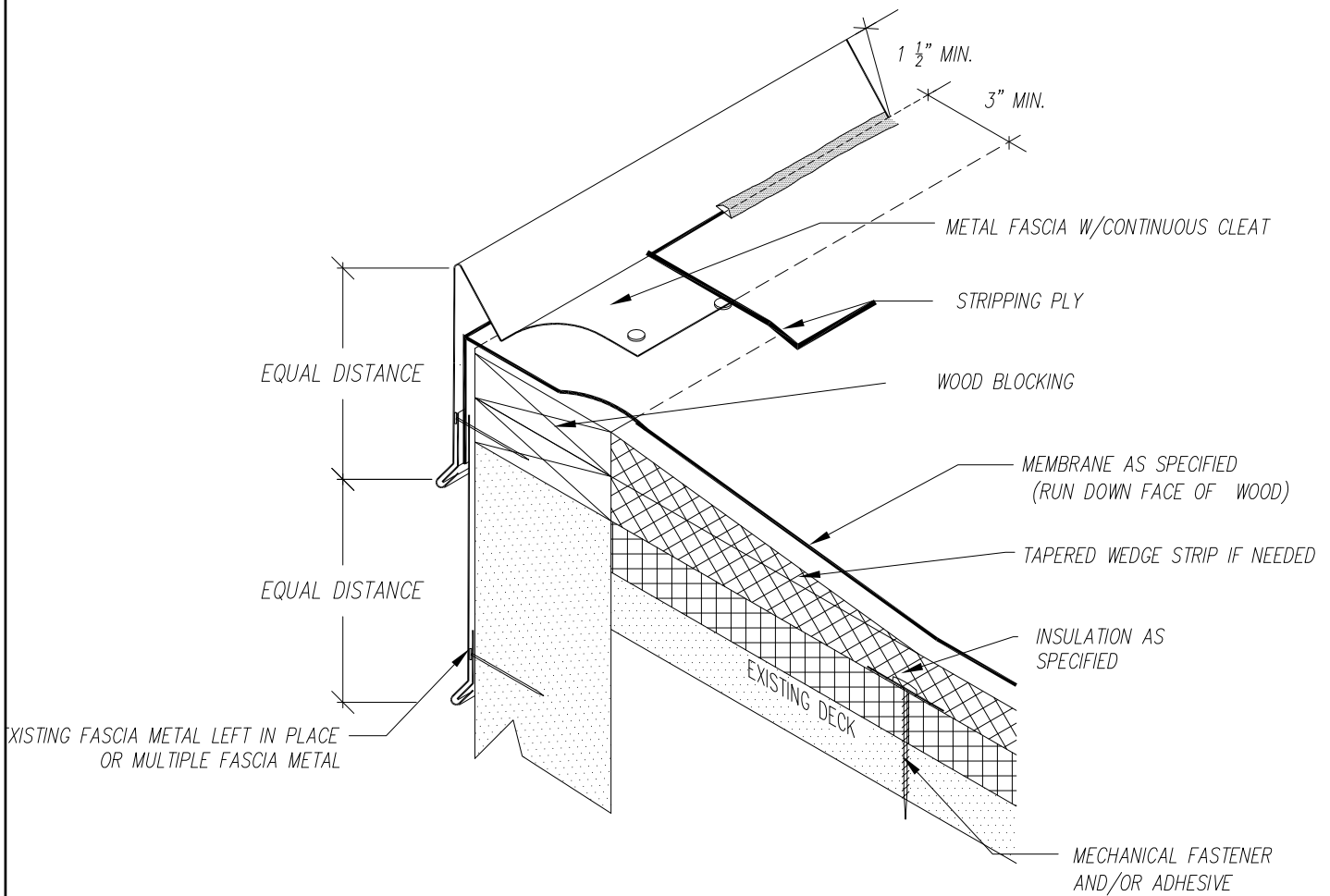
Sheet Title:

FASCIA DETAIL

Rev-01/20/2014

Sheet Number

A2.6



Pressure Treated Plywood and Lumber: These products shall not be specified or provided for use in roofing projects as a substrate material

1
A2.7

MULTIPLE FASCIA DETAIL

NO SCALE:

**SEE SECTION 07 53 23
FOR INSTALLATION INSTRUCTIONS**



State of Wisconsin
Department of Administration
Division of Facilities Development

Agency / Institution:

TYPICAL DFD STANDARD
FULLY ADHERED EPDM DETAIL

Sheet Title:

MULTIPLE FASCIA DETAIL

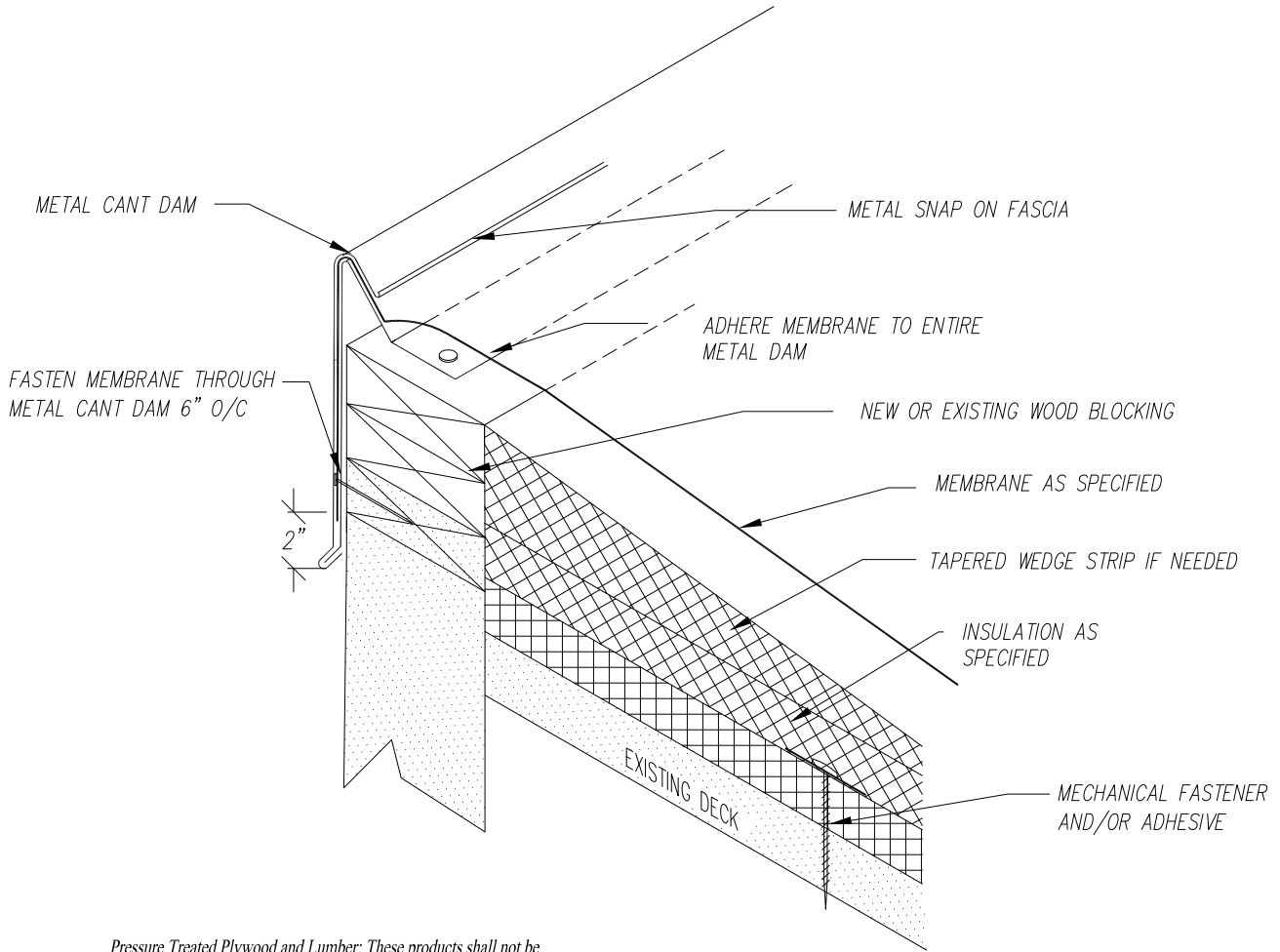
Rev-01/20/2014

Scale NO

DFD Number
Set Type
Date Issued
RD.

Sheet Number

A2.7



Pressure Treated Plywood and Lumber: These products shall not be specified or provided for use in roofing projects as a substrate material

1
A2.8

SNAP ON FASCIA DETAIL

NO SCALE:

SEE SECTION 07 53 23
FOR INSTALLATION INSTRUCTIONS



State of Wisconsin
Department of Administration
Division of Facilities Development

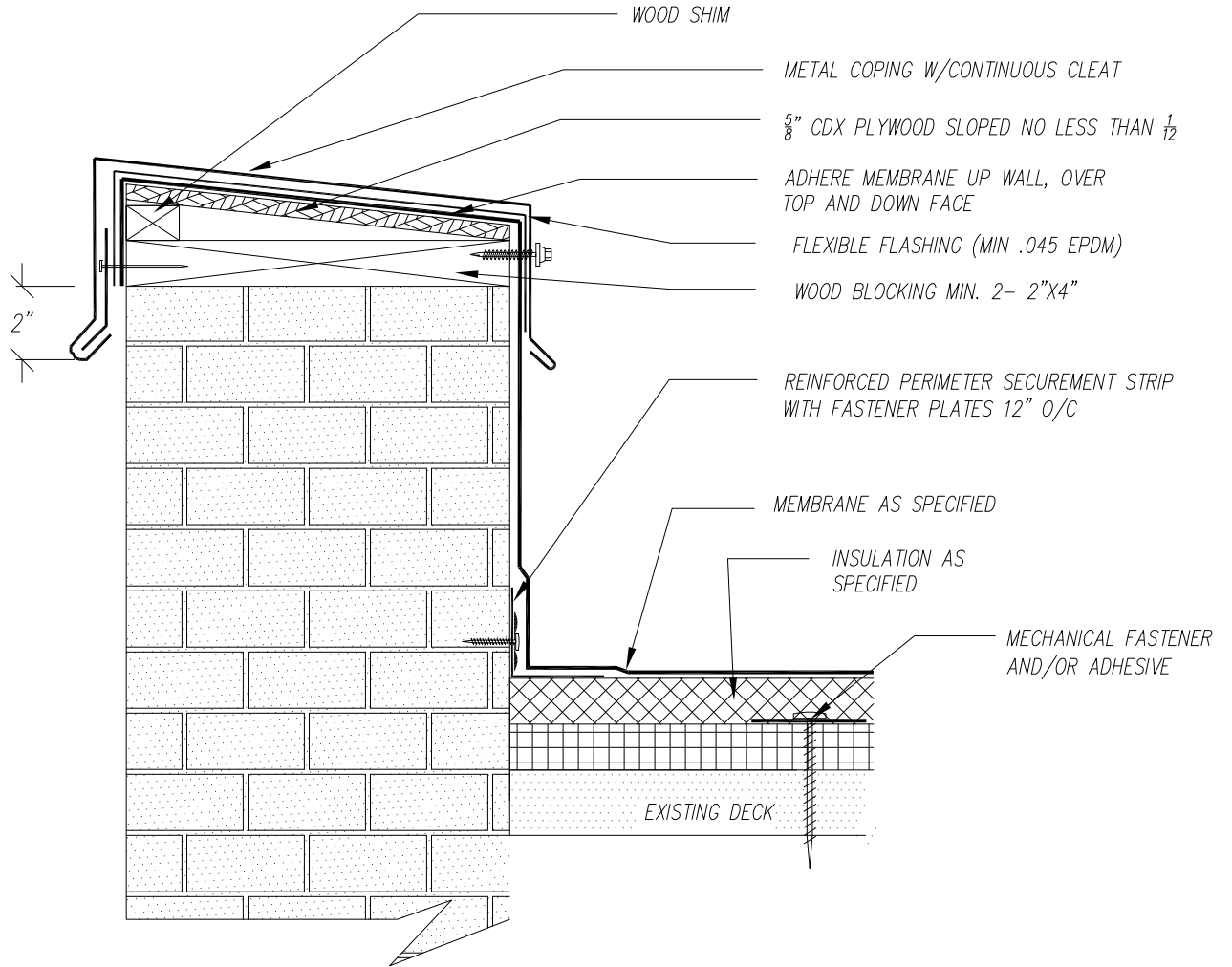
Agency / Institution:

TYPICAL DFD STANDARD
FULLY ADHERED EPDM DETAIL

Sheet Title:

SNAP ON FASCIA DETAIL DETAIL Rev-01/20/2014

Scale	NO
DFD Number	
Set Type	RD.
Date Issued	
Sheet Number	A2.8



1
A2.9

COPING DETAIL

NO SCALE:

SEE SECTION 07 53 23
FOR INSTALLATION INSTRUCTIONS

Pressure Treated Plywood and Lumber: These products shall not be specified or provided for use in roofing projects as a substrate material



State of Wisconsin
Department of Administration
Division of Facilities Development

TYPICAL DFD STANDARD
FULLY ADHERED EPDM DETAIL

Scale	NO
DFD Number	
Set Type	RD.
Date Issued	

Agency / Institution:

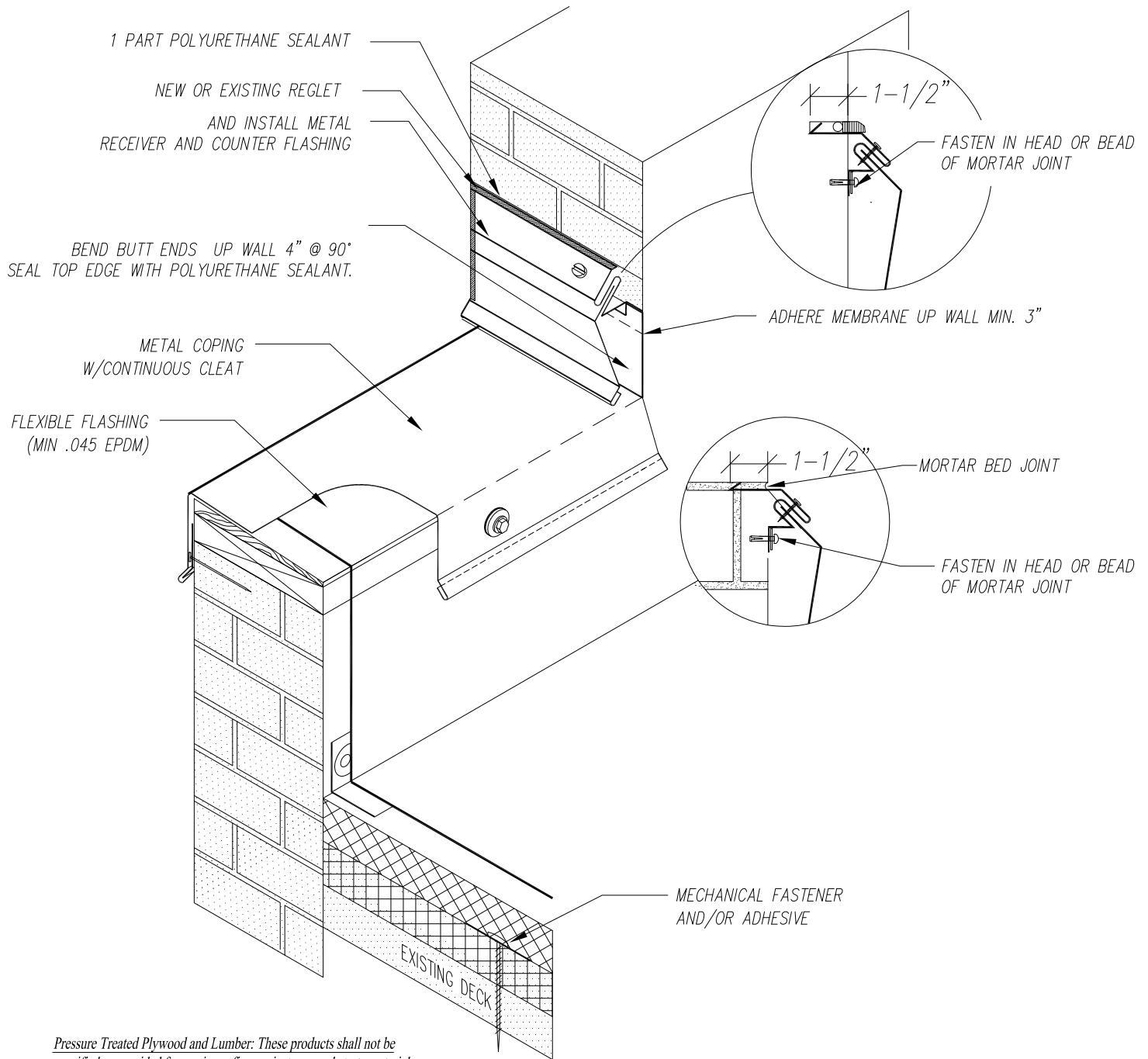
Sheet Title:

COPING DETAIL

Rev-01/20/2014

Sheet Number

A2.9



Pressure Treated Plywood and Lumber: These products shall not be specified or provided for use in roofing projects as a substrate material

1
A2.10

BUTT END @ COPING DETAIL

NO SCALE:

SEE SECTION 07 53 23
FOR INSTALLATION INSTRUCTIONS



State of Wisconsin
Department of Administration
Division of Facilities Development

TYPICAL DFD STANDARD
FULLY ADHERED EPDM DETAIL

Scale	NO
DFD Number	
Set Type	RD.
Date Issued	
Sheet Number	A2.10

Agency / Institution:

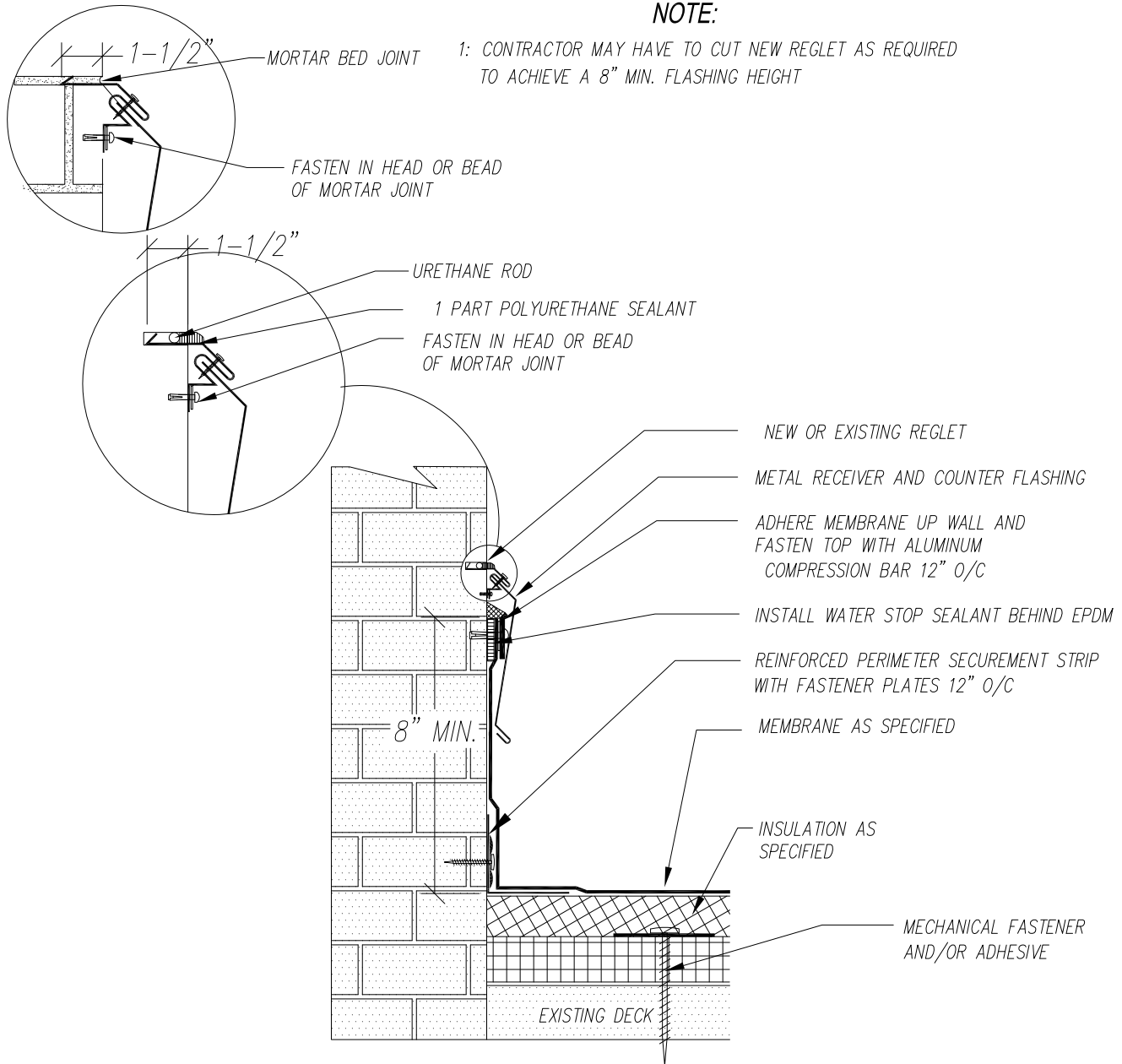
Sheet Title:

BUTT END COPING DETAIL

Rev-01/20/2014

NOTE:

1: CONTRACTOR MAY HAVE TO CUT NEW REGLET AS REQUIRED TO ACHIEVE A 8" MIN. FLASHING HEIGHT



1
A2.11

REGLET & 2 PC. COUNTERFLASHING DETAIL

NO SCALE:

SEE SECTION 07 53 23
FOR INSTALLATION INSTRUCTIONS



State of Wisconsin
Department of Administration
Division of Facilities Development

TYPICAL DFD STANDARD
FULLY ADHERED EPDM DETAIL

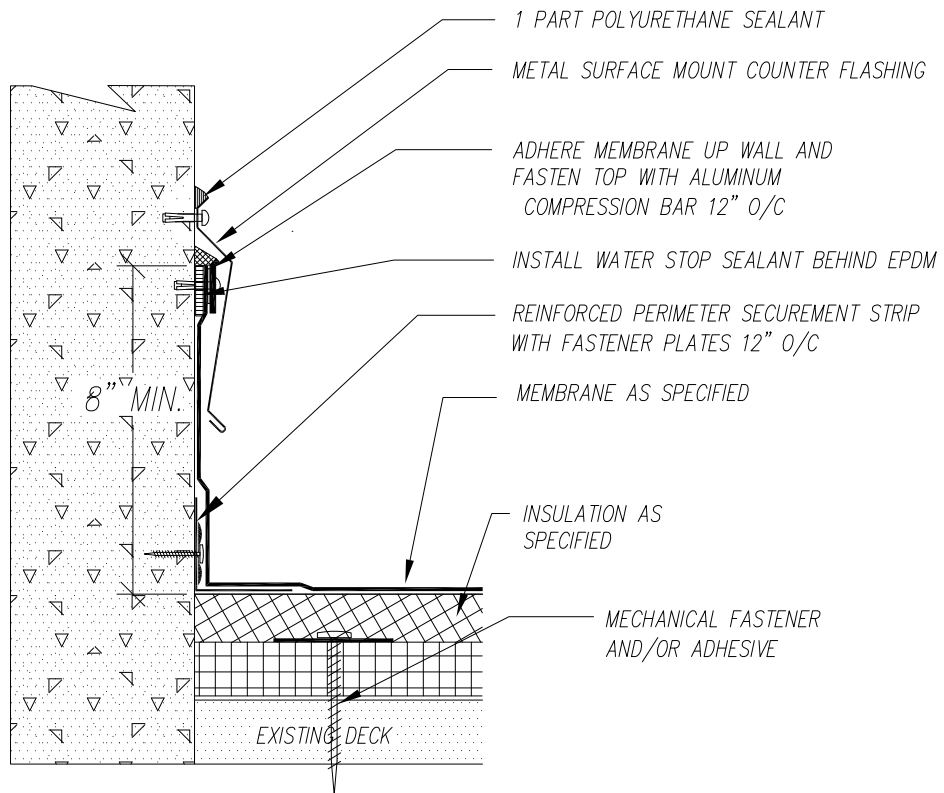
Scale	NO
DFD Number	
Set Type	RD.
Date Issued	

Agency / Institution:

Sheet Title:

2 PC. C/F DETAIL DETAIL Rev-01/20/2014

Sheet Number
A2.11



1
A2.12

SURFACE MOUNT COUNTERFLASHING DETAIL

NO SCALE:

SEE SECTION 07 53 23
FOR INSTALLATION INSTRUCTIONS



State of Wisconsin
Department of Administration
Division of Facilities Development

TYPICAL DFD STANDARD
FULLY ADHERED EPDM DETAIL

Scale	NO
DFD Number	
Set Type	RD.
Date Issued	

Agency / Institution:

Sheet Title:

SURFACE MOUNT C/F. DETAIL

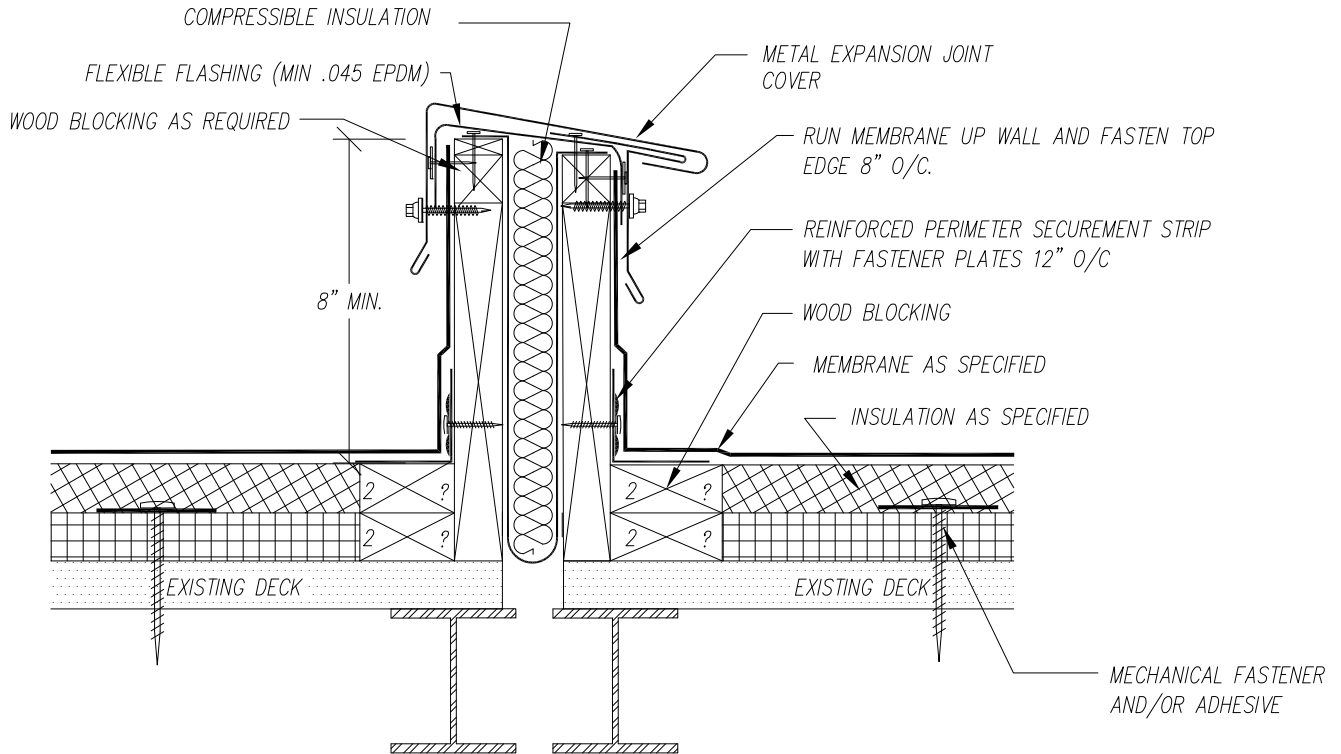
Rev-01/20/2014

Sheet Number

A2.12

NOTE:

- 1: CONTRACTOR MAY USE EXISTING WOOD CONSTRUCTION IF IN SOUND CONDITION
- 2" CONTRACTOR MAY HAVE TO RAISE EXISTING JOINT



Pressure Treated Plywood and Lumber: These products shall not be specified or provided for use in roofing projects as a substrate material

1
A2.13

EXP JT. DETAIL

NO SCALE:

**SEE SECTION 07 53 23
FOR INSTALLATION INSTRUCTIONS**



State of Wisconsin
Department of Administration
Division of Facilities Development

TYPICAL DFD STANDARD
FULLY ADHERED EPDM DETAIL

Scale	NO
DFD Number	
Set Type	RD.
Date Issued	

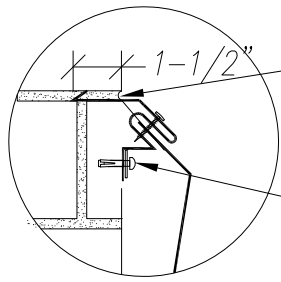
Agency / Institution:

Sheet Title:

EXP. JT. DETAIL

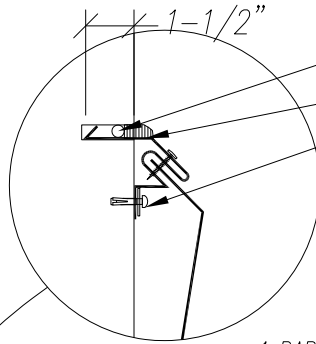
Rev-01/20/2014

Sheet Number
A2.13



MORTAR BED JOINT

FASTEN IN HEAD OR BEAD OF MORTAR JOINT



URETHANE ROD

FASTEN IN HEAD OR BEAD OF MORTAR JOINT

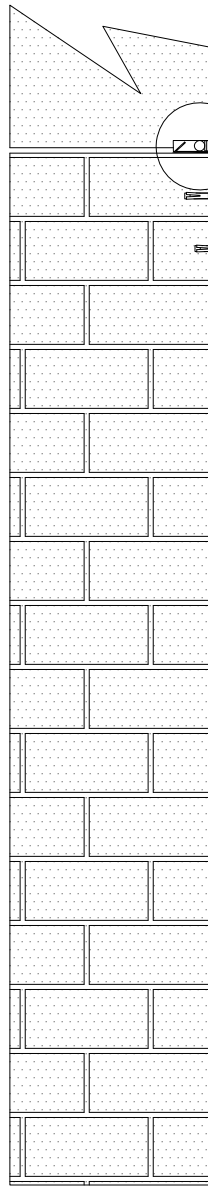
NOTE:

1: CONTRACTOR MAY HAVE TO CUT OUT EXISTING INSULATION TO INSTALL WOOD BLOCKING.

2: CONTRACTOR MAY USE EXISTING WOOD CONSTRUCTION IF IN SOUND CONDITION

3: CONTRACTOR MAY HAVE TO CUT NEW REGLET AS REQUIRED TO ACHIEVE A 8" MIN. FLASHING HEIGHT

8 MIN.



1 PART POLYURETHANE SEALANT

NEW OR EXISTING REGLET

NEW OR EXISTING METAL RECEIVER

NEW OR EXISTING METAL COUNTER FLASHING

METAL EXPANSION JOINT COVER

ADHERE MEMBRANE TO WALL

COMPRESSIBLE INSULATION

NEW AND/OR EXISTING WOOD BLOCKING

REINFORCED PERIMETER SECUREMENT STRIP WITH FASTENER PLATES 12" O/C

NEW AND/OR EXISTING WOOD BLOCKING

MEMBRANE AS SPECIFIED RUN UP WALL AND FASTEN TOP EDGE 8" O/C.

INSULATION AS SPECIFIED

EXISTING DECK

MECHANICAL FASTENER AND/OR ADHESIVE

1
A2.14

WALL EXP. JOINT DETAIL

NO SCALE:

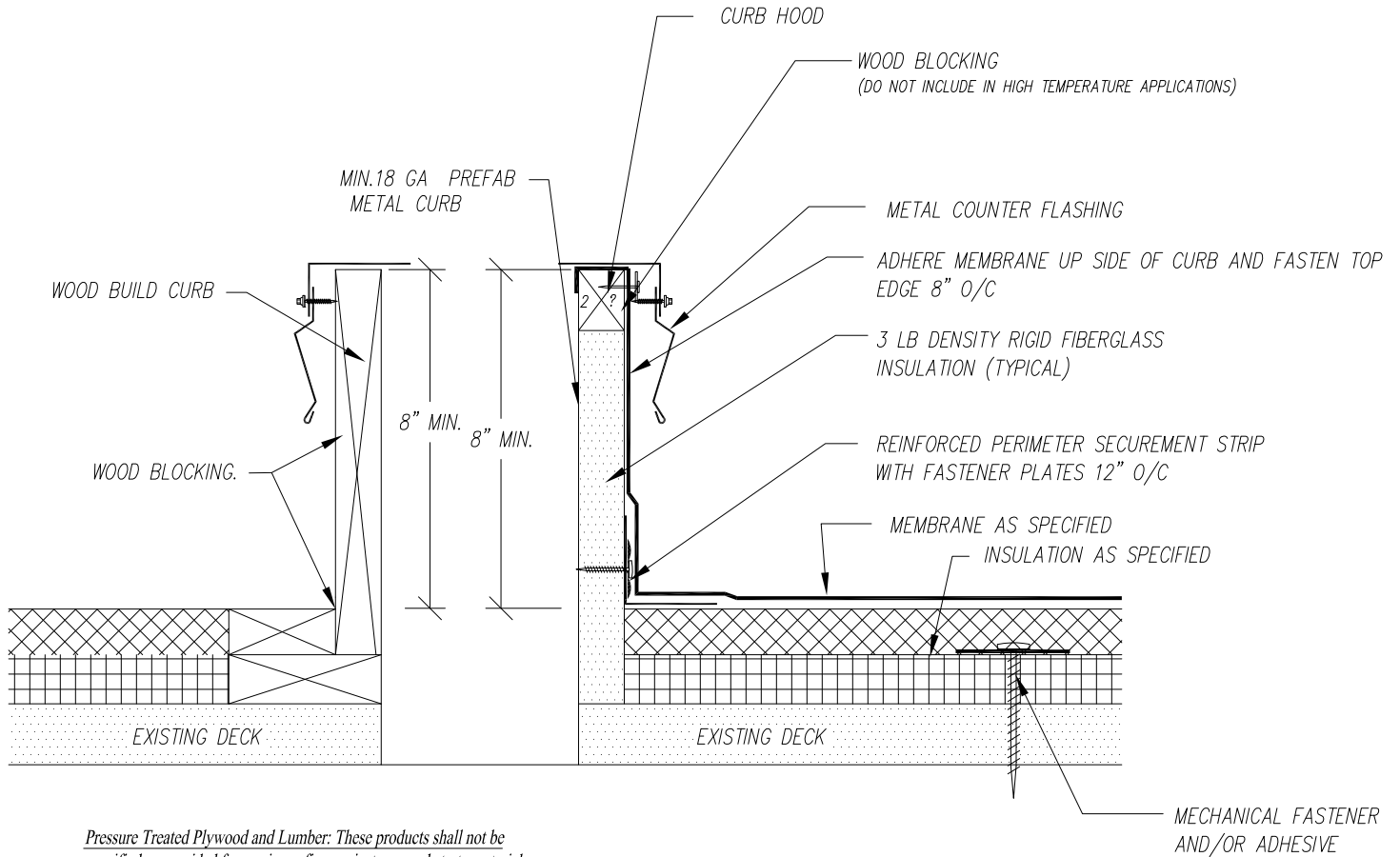
SEE SECTION 07 53 23
FOR INSTALLATION INSTRUCTIONS

Pressure Treated Plywood and Lumber: These products shall not be specified or provided for use in roofing projects as a substrate material

<p>State of Wisconsin Department of Administration Division of Facilities Development</p>	<p>TYPICAL DFD STANDARD FULLY ADHERED EPDM DETAIL</p>	Scale	NO
		DFD Number	
		Set Type	RD.
		Date Issued	
Agency / Institution:	Sheet Title:	Sheet Number	A2.14
	<p>WALL EXP. JT. DETAIL Rev-01/20/2014</p>		

NOTE:

- 1: CONTRACTOR TO RAISE ALL EXISTING UNITS / CURBS IF NEEDED TO MAINTAIN AN 8" MIN. FINISHED FLASHING HEIGHT.
- 2: PROVIDE TAPERED SADDLES BEHIND CURBS.
- 3: REMOVABLE HOOD, SINGLE PLY TERMINATED AT INTERIOR OF CURB.
NON REMOVABLE HOOD, REQUIRE TERM BAR AND METAL COUNTER FLASHING



Pressure Treated Plywood and Lumber: These products shall not be specified or provided for use in roofing projects as a substrate material

1
A2.15

ROOF CURB DETAIL

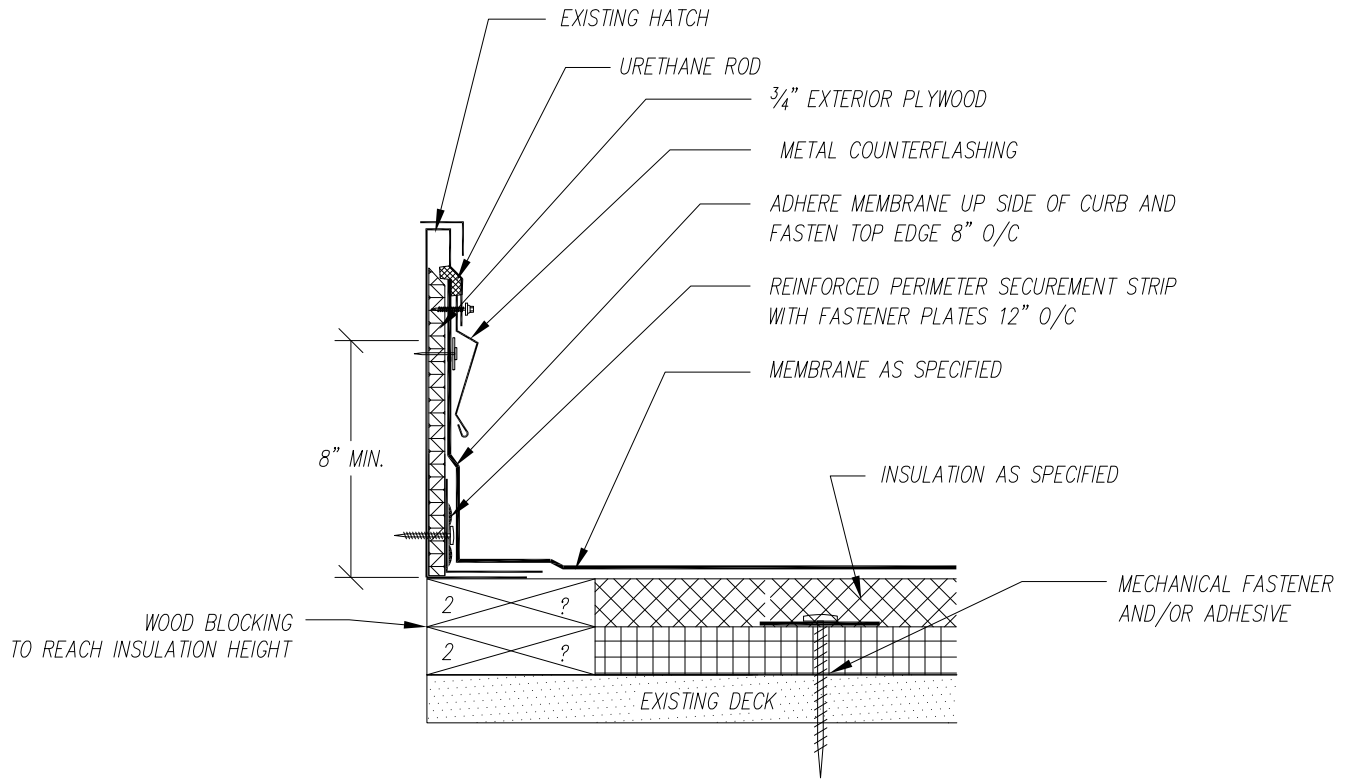
NO SCALE:

**SEE SECTION 07 53 23
FOR INSTALLATION INSTRUCTIONS**

 <p>State of Wisconsin Department of Administration Division of Facilities Development</p>	<p>TYPICAL DFD STANDARD FULLY ADHERED EPDM DETAIL</p>	Scale	NO
		DFD Number	
<p>Agency / Institution:</p>	<p>Sheet Title: <i>ROOF CURB DETAIL Rev-01/20/2014</i></p>	Set Type	RD.
		Date Issued	
		Sheet Number	A2.15

NOTE:

- 1: CONTRACTOR TO RAISE ALL EXISTING UNITS / CURBS IF NEEDED TO MAINTAIN AN 8" MIN. FINISHED FLASHING HEIGHT.
- 2: PROVIDE TAPERED SADDLES BEHIND CURBS.
- 3: PROVIDE METAL COUNTER FLASHING AT ALL CURBS ETC.



Pressure Treated Plywood and Lumber: These products shall not be specified or provided for use in roofing projects as a substrate material

1
A2.16

ROOF HATCH DETAIL

NO SCALE:

SEE SECTION 07 53 23
FOR INSTALLATION INSTRUCTIONS



State of Wisconsin
Department of Administration
Division of Facilities Development

Agency / Institution:

TYPICAL DFD STANDARD
FULLY ADHERED EPDM DETAIL

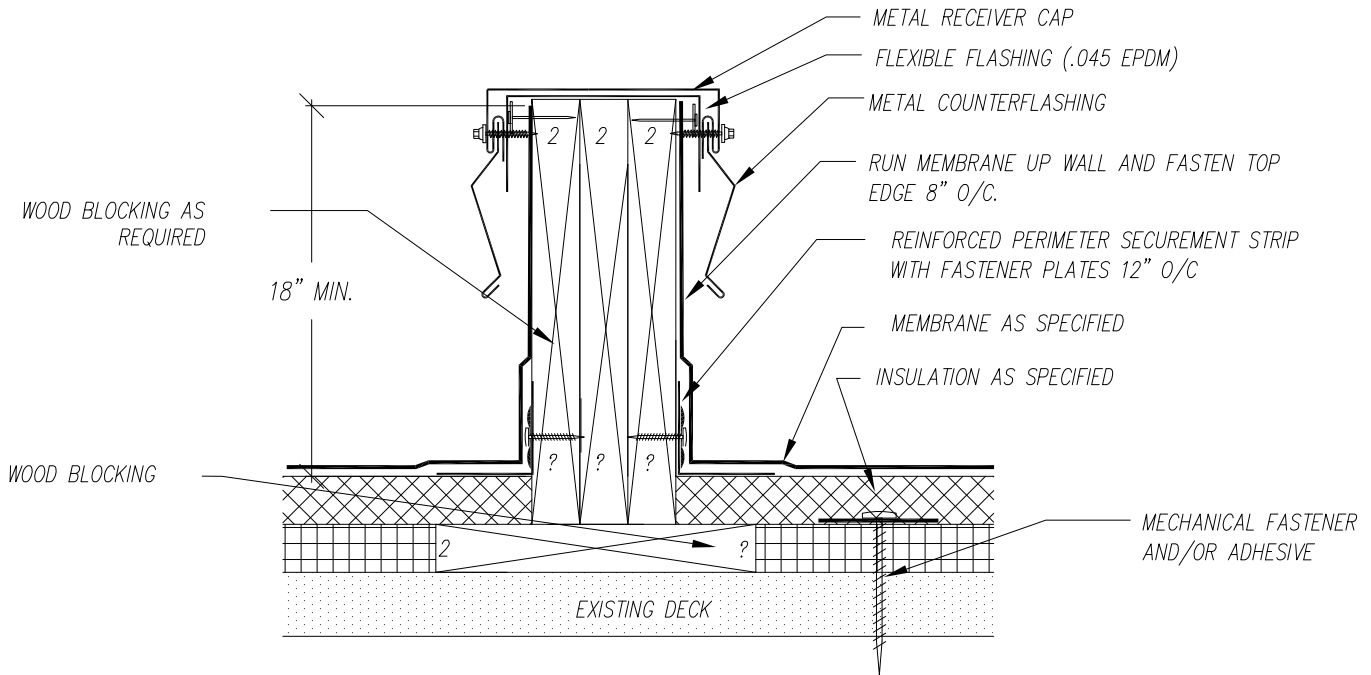
Sheet Title:

ROOF HATCH DETAIL Rev-01/20/2014

Scale	NO
DFD Number	
Set Type	RD.
Date Issued	
Sheet Number	A2.16

NOTE:

- 1: CONTRACTOR TO RAISE ALL EXISTING UNITS / CURBS IF NEEDED TO MAINTAIN AN 8" MIN. FINISHED FLASHING HEIGHT.
- 2: PROVIDE TAPERED SADDLES BEHIND CURBS.
- 3: PROVIDE PREFINISHED METAL COUNTER FLASHING AT ALL CURBS ETC.



Pressure Treated Plywood and Lumber: These products shall not be specified or provided for use in roofing projects as a substrate material

1
A2.17

WOOD BUILD SLEEPER CURB DETAIL

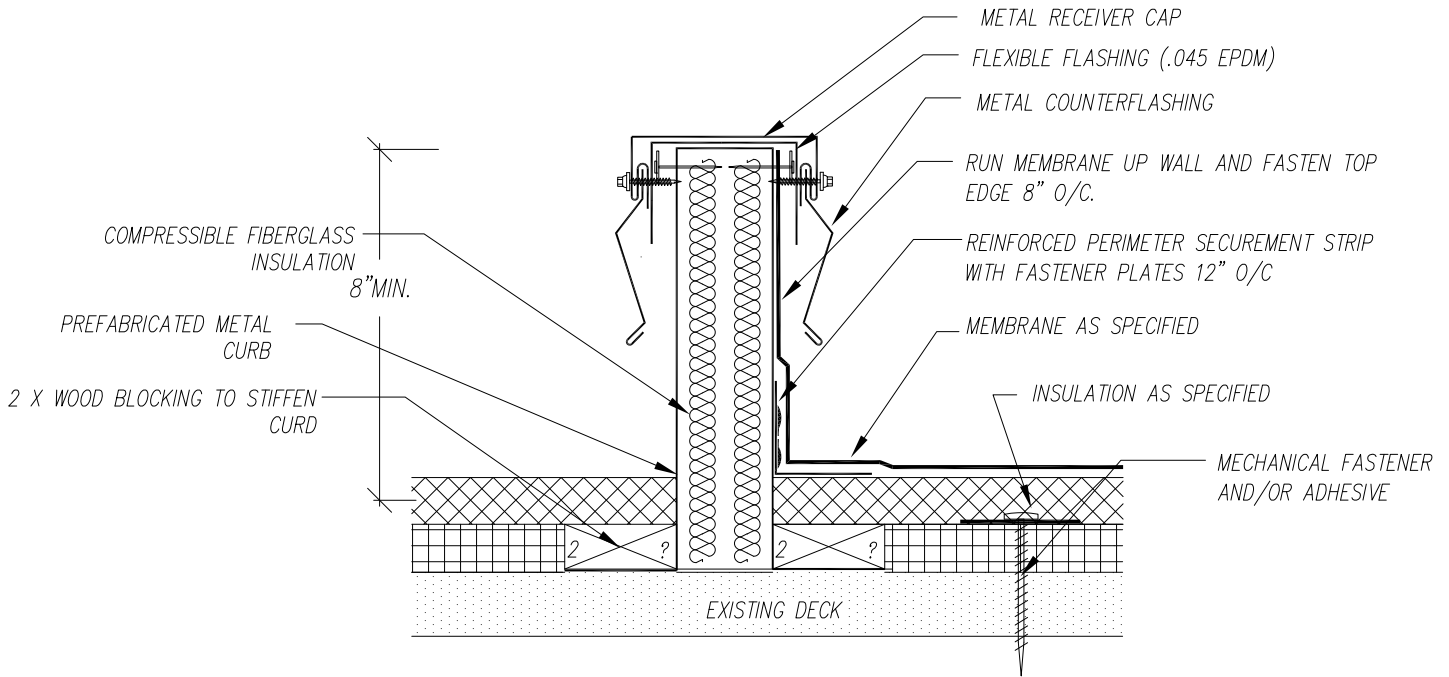
NO SCALE:

**SEE SECTION 07 53 23
FOR INSTALLATION INSTRUCTIONS**

 <p>State of Wisconsin Department of Administration Division of Facilities Development</p>	<p>TYPICAL DFD STANDARD FULLY ADHERED EPDM DETAIL</p>	Scale	NO
		DFD Number	
Agency / Institution:	Sheet Title:	Date Issued	RD.
	SLEEPER CURB DETAIL Rev-01/20/2014	Sheet Number	A2.17

NOTE:

- 1: CONTRACTOR TO RAISE ALL EXISTING UNITS / CURBS IF NEEDED TO MAINTAIN AN 8" MIN. FINISHED FLASHING HEIGHT.
- 2: PROVIDE TAPERED SADDLES BEHIND CURBS.
- 3: PROVIDE METAL COUNTER FLASHING AT ALL CURBS ETC.



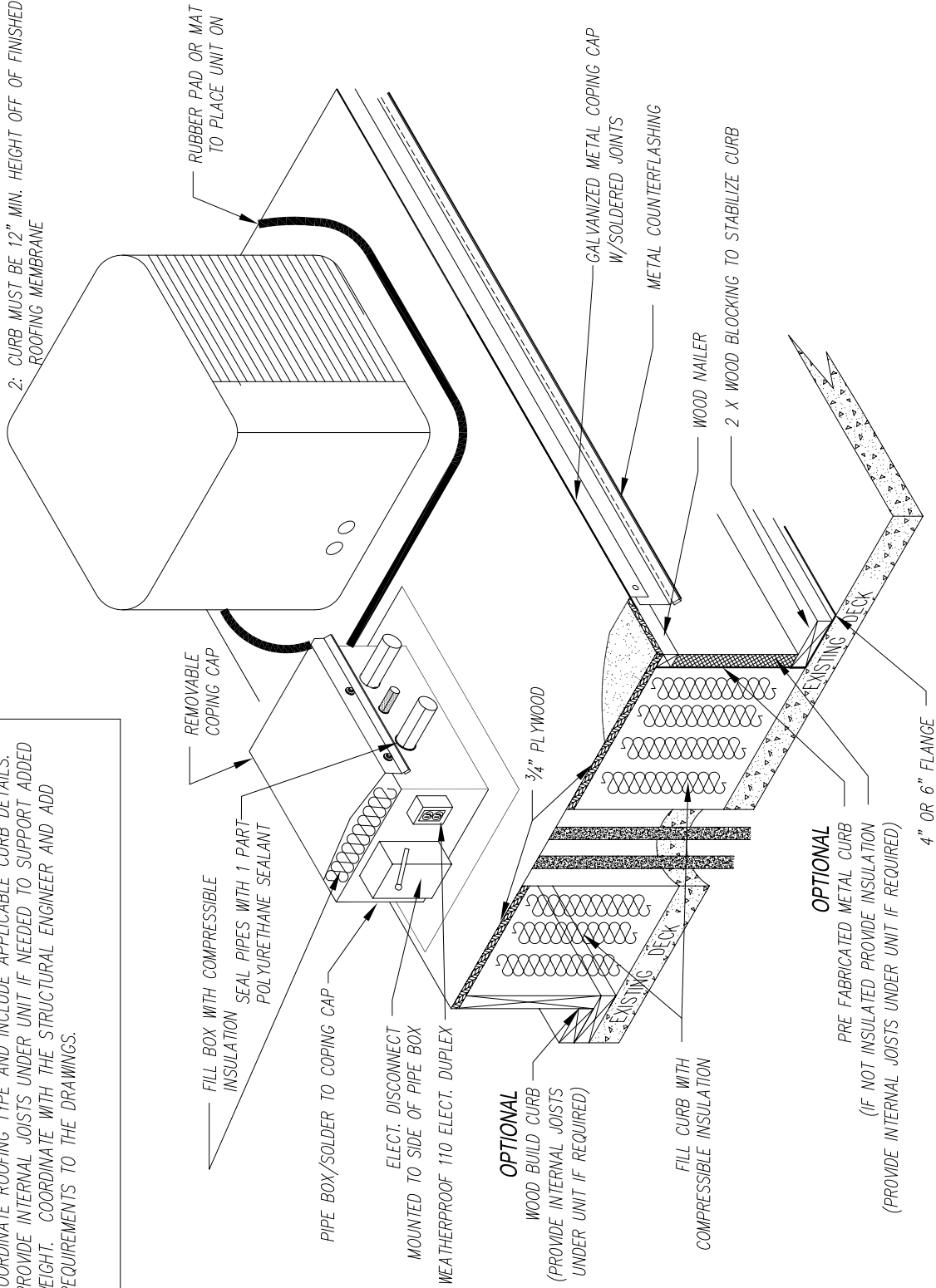
Pressure Treated Plywood and Lumber: These products shall not be specified or provided for use in roofing projects as a substrate material

1
A2.18
PREFAB. METAL SLEEPER CURB DETAIL
 NO SCALE: SEE SECTION 07 53 23
FOR INSTALLATION INSTRUCTIONS

 State of Wisconsin Department of Administration Division of Facilities Development	TYPICAL DFD STANDARD FULLY ADHERED EPDM DETAIL	Scale	NO
		DFD Number	
Agency / Institution:	Sheet Title:	Date Issued	RD.
	SLEEPER CURB DETAIL Rev-01/20/2014	Sheet Number	A2.18

NOTE:
 1: PROVIDE INTERNAL JOISTS UNDER UNIT IF NEEDED TO SUPPORT ADDED WEIGHT
 2: CURB MUST BE 12" MIN. HEIGHT OFF OF FINISHED ROOFING MEMBRANE

NOTES TO SPECIFIER:
 COORDINATE ROOFING TYPE AND INCLUDE APPLICABLE CURB DETAILS
 PROVIDE INTERNAL JOISTS UNDER UNIT IF NEEDED TO SUPPORT ADDED WEIGHT. COORDINATE WITH THE STRUCTURAL ENGINEER AND ADD REQUIREMENTS TO THE DRAWINGS.



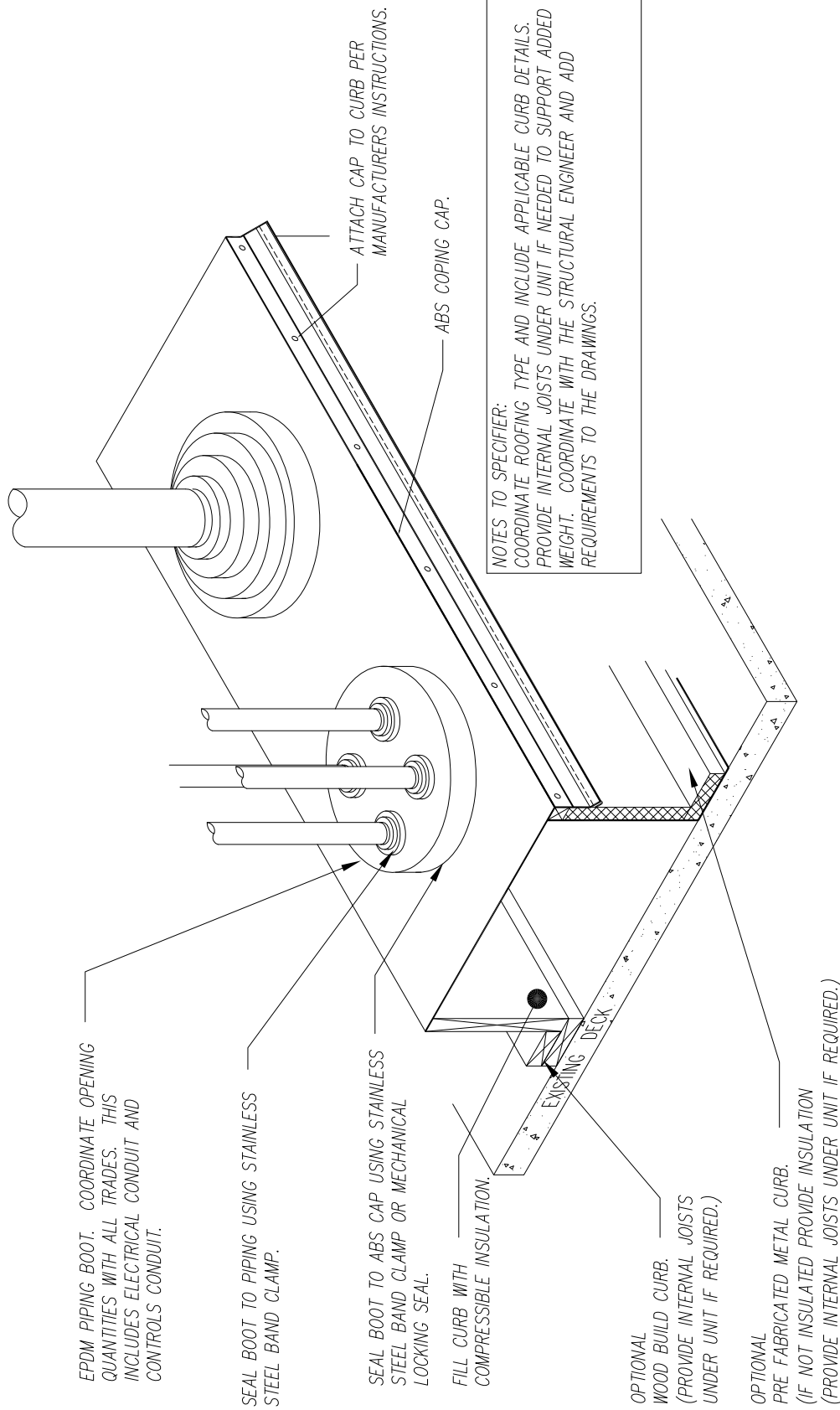
EQUIPMENT SUPPORT W/PIPE CHASE DETAIL

1
 A2.19

NO SCALE:

Pressure Treated Plywood and Lumber: These products shall not be specified or provided for use in roofing projects as a substrate material

	State of Wisconsin Department of Administration Division of Facilities Development	TYPICAL DFD STANDARD FULLY ADHERED EPDM DETAIL		Scale NO
	Agency / Institution:	Sheet Title: EQUIPMENT SUPPORT DETAIL Rev-01/20/2014	DFD Number Set Type Date Issued RD.	Sheet Number A2.19



1 MULTIPLE PIPE PENETRATIONS THRU ROOF DETAIL
 NO SCALE:
 A2.20

Pressure Treated Plywood and Lumber: These products shall not be specified or provided for use in roofing projects as a substrate material



State of Wisconsin
 Department of Administration
 Division of Facilities Development

TYPICAL DFD STANDARD
 FULLY ADHERED EPDM DETAIL

Scale NO

DFD Number

Set Type RD.

Date

Issued

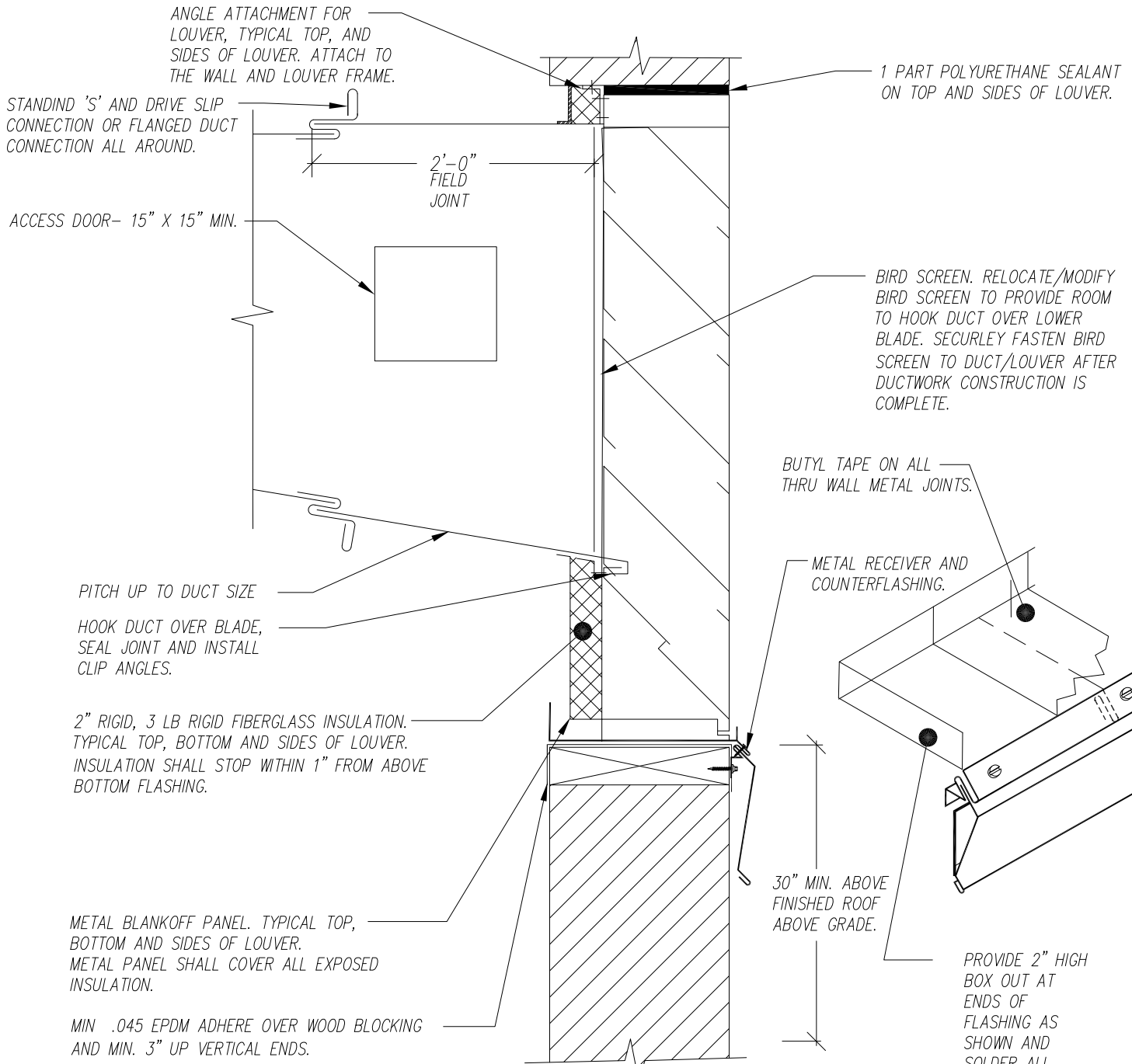
Sheet Title:

MULTIPLE PIPE SUPPORT DETAIL Rev-01/20/2014

Sheet Number

A2.20

Agency / Institution:



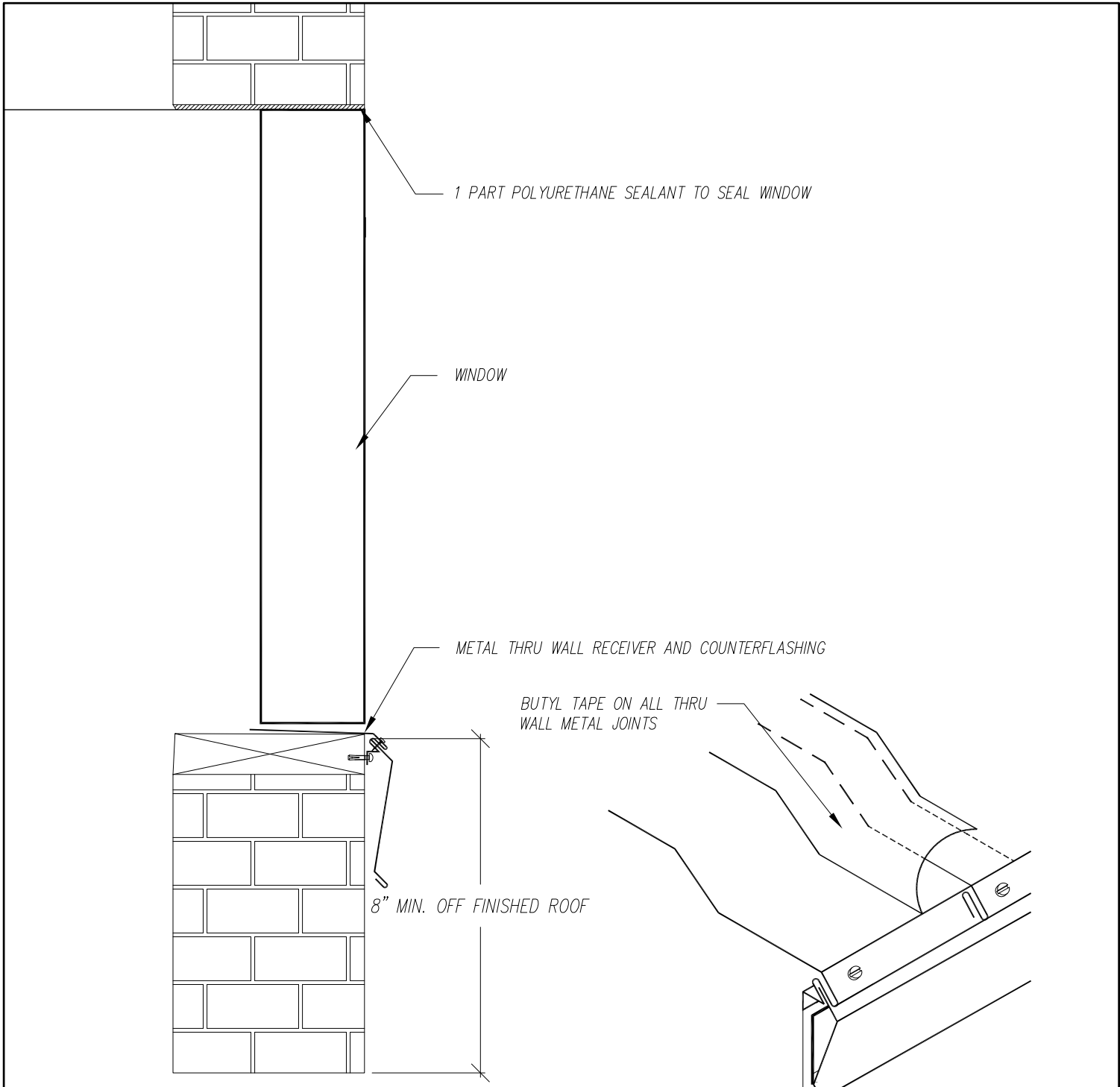
1
A2.21
LOUVER INSTALLATION DETAIL
 NO SCALE:

NOTES:

1: SEAL ALL DUCT JOINTS, CORNERS AND SEAMS WATERTIGHT USING SEALANT AND OR SOLDERING. REFER TO SPECIFICATION SECTION 23 31 00 FOR ACCEPTABLE SEALANTS TO BE UTILIZED IN DUCT SYSTEMS

NOTES TO SPECIFIER:
 COORDINATE ACCESS DOOR SIZES AND LOCATIONS FOR EACH INDIVIDUAL PROJECT. THE SIZE LISTED IS A MINIMUM SIZE INTENDED TO BE USED FOR SMALLER SIZE LOUVERS/DUCTS AND SHOULD NOT BE UTILIZED FOR ALL DESIGNS.

 State of Wisconsin Department of Administration Division of Facilities Development	TYPICAL DFD STANDARD FULLY ADHERED EPDM DETAIL	Scale	NO
		DFD Number	
Agency / Institution:	Sheet Title: <i>LOUVER INSTALLATION DETAIL Rev-01/20/2014</i>	Set Type	RD.
		Date Issued	
		Sheet Number	A2.21

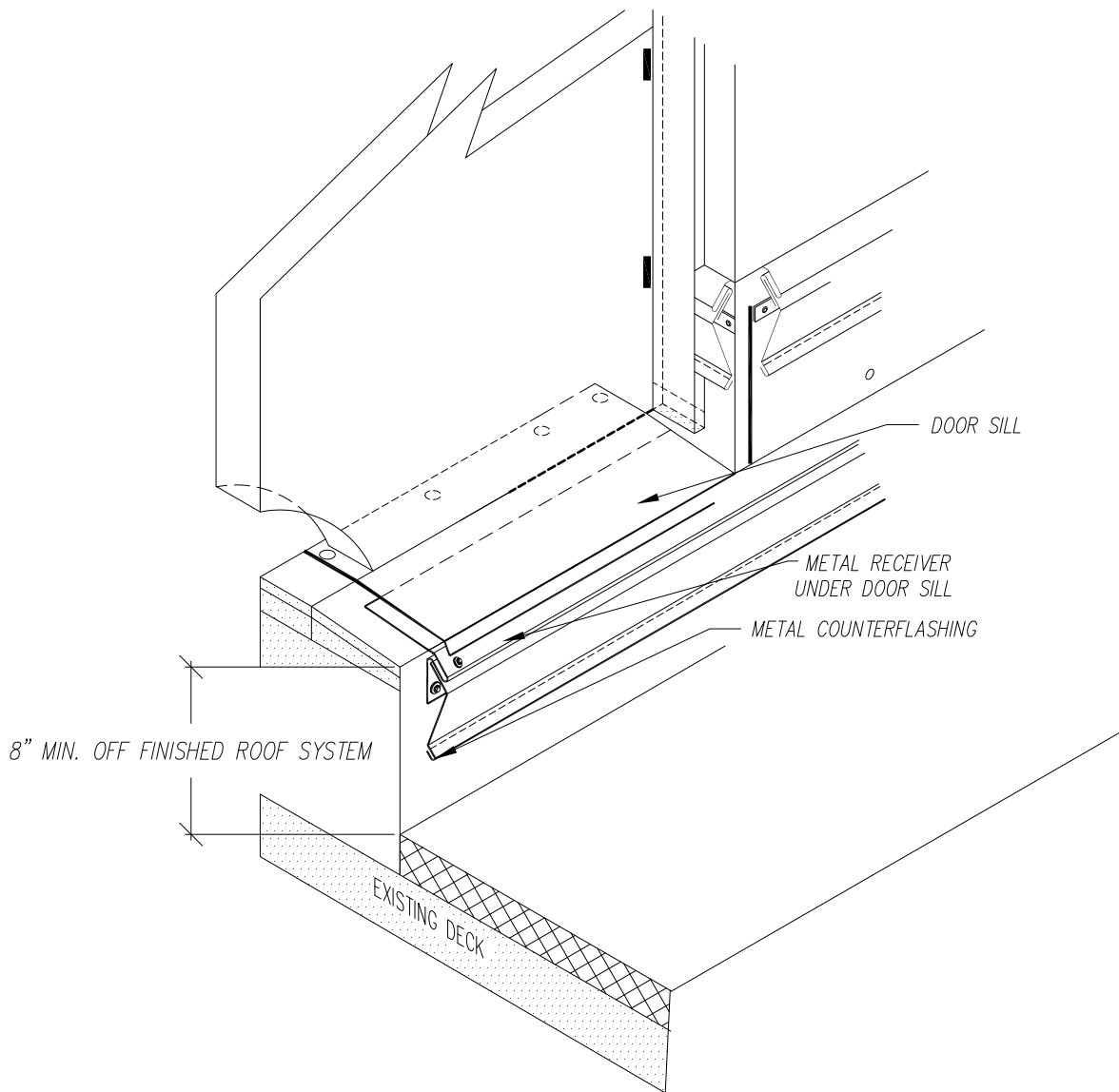


1
A2.22

WINDOW FLASHING MIN. HEIGHT DETAIL

NO SCALE:

 <p>State of Wisconsin Department of Administration Division of Facilities Development</p>	<p>TYPICAL DFD STANDARD FULLY ADHERED EPDM DETAIL</p>	Scale	NO
		DFD Number	
<p>Agency / Institution:</p>	<p>Sheet Title:</p> <p>WINDOW FLASHING DETAIL Rev-01/20/2014</p>	Set Type	RD.
		Date Issued	
		Sheet Number	A2.22



1
A2.23

DOOR FLASHING MIN. HEIGHT DETAIL

NO SCALE:



State of Wisconsin
Department of Administration
Division of Facilities Development

Agency / Institution:

TYPICAL DFD STANDARD
FULLY ADHERED EPDM DETAIL

Sheet Title:

DOOR FLASHING DETAIL Rev-01/20/2014

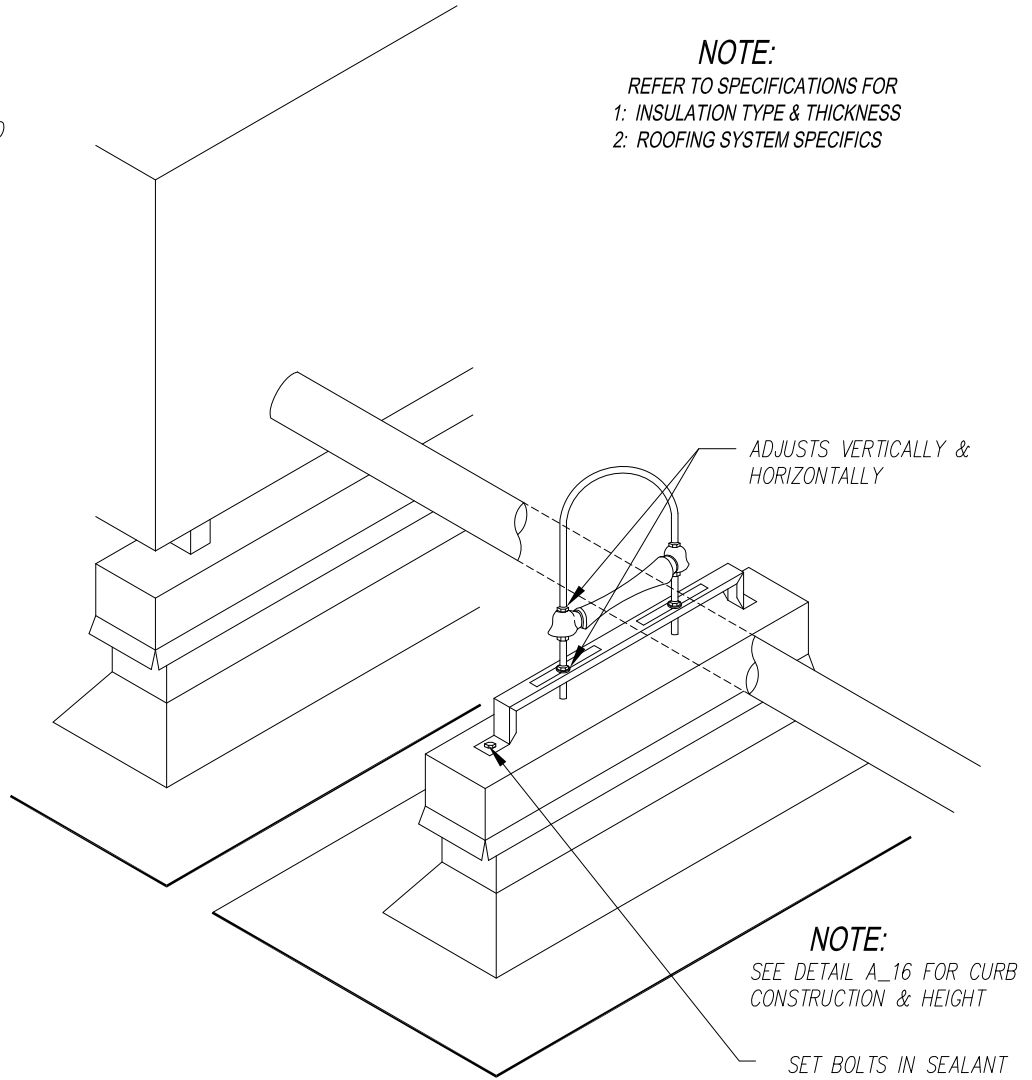
Scale	NO
DFD Number	
Set Type	RD.
Date Issued	
Sheet Number	A2.23

NOTE:

- 1: THESE DRAWINGS ARE FOR INFORMATIONAL PURPOSES ONLY, CONSTRUCTION MAY VARY FOR DIFFERENT APPLICATIONS
- 2: SEE TABLE BELOW FOR REQUIRED HEIGHTS & WIDTHS

NOTE:

- REFER TO SPECIFICATIONS FOR
- 1: INSULATION TYPE & THICKNESS
- 2: ROOFING SYSTEM SPECIFICS



WIDTH OF EQUIPMENT	OFF FINISHED ROOF
UP TO 36"	18"
37" AND UP	36"

1
A2.24

WOOD BUILD PIPE SUPPORT DETAIL

NO SCALE:



State of Wisconsin
Department of Administration
Division of Facilities Development

Agency / Institution:

TYPICAL DFD STANDARD
FULLY ADHERED EPDM DETAIL

Sheet Title:

PIPE SUPPORT DETAIL Rev-01/20/2014

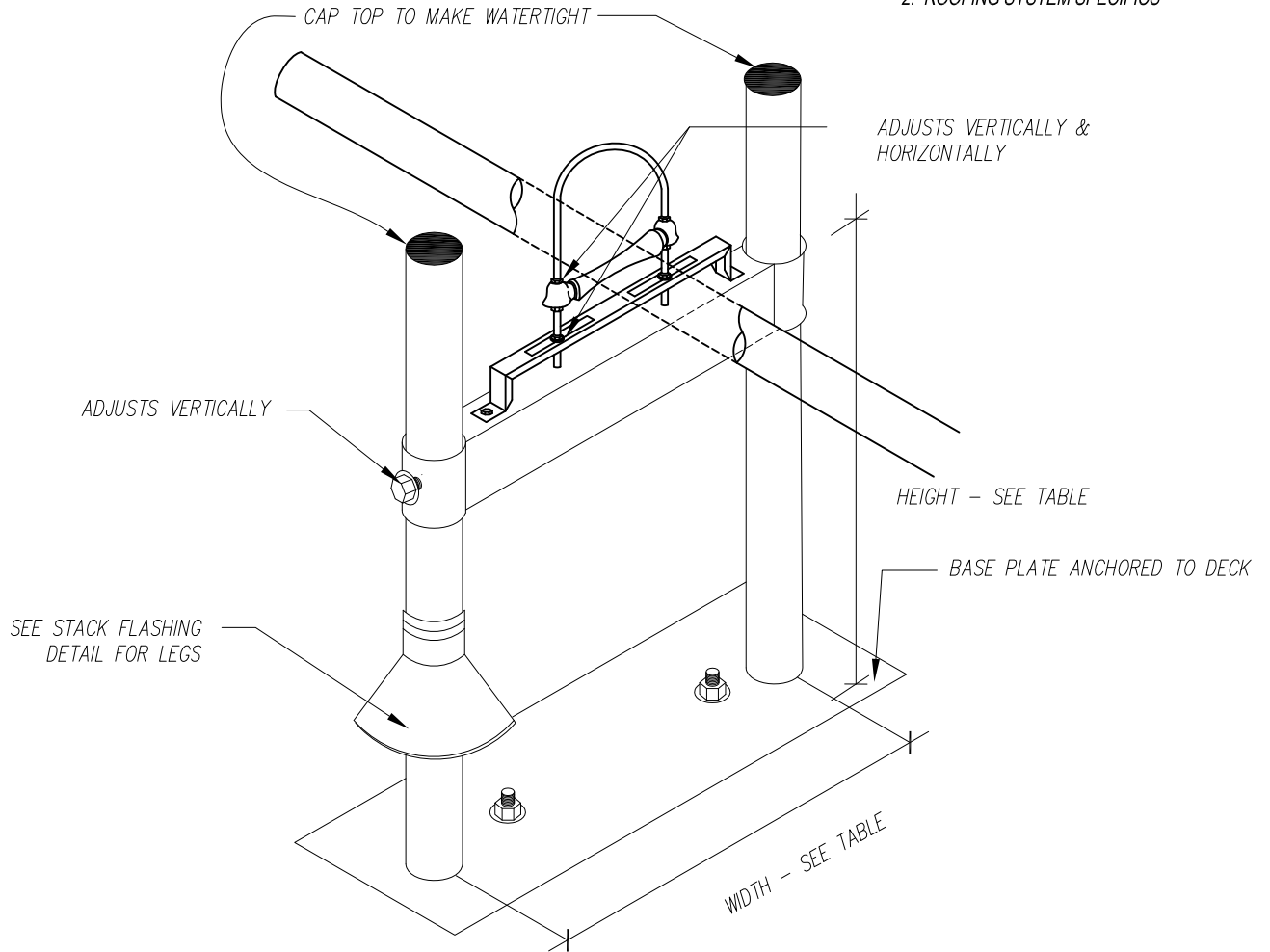
Scale	NO
DFD Number	
Set Type	RD.
Date Issued	
Sheet Number	A2.24

NOTE:

- 1: THESE DRAWINGS ARE FOR INFORMATIONAL PURPOSES ONLY, CONSTRUCTION MAY VARY FOR DIFFERENT APPLICATIONS
- 2: SEE TABLE BELOW FOR REQUIRED HEIGHTS & WIDTHS

NOTE:

- 1: INSULATION TYPE & THICKNESS
- 2: ROOFING SYSTEM SPECIFICS



WIDTH OF EQUIPMENT	OFF FINISHED ROOF
UP TO 36"	18"
37" AND UP	36"

1
A2.25

IRON BUILD PIPE SUPPORT DETAIL

NO SCALE:



State of Wisconsin
Department of Administration
Division of Facilities Development

TYPICAL DFD STANDARD
FULLY ADHERED EPDM DETAIL

Scale	NO
DFD Number	
Set Type	RD.
Date Issued	

Agency / Institution:

Sheet Title:

PIPE SUPPORT DETAIL

Rev-01/20/2014

Sheet Number

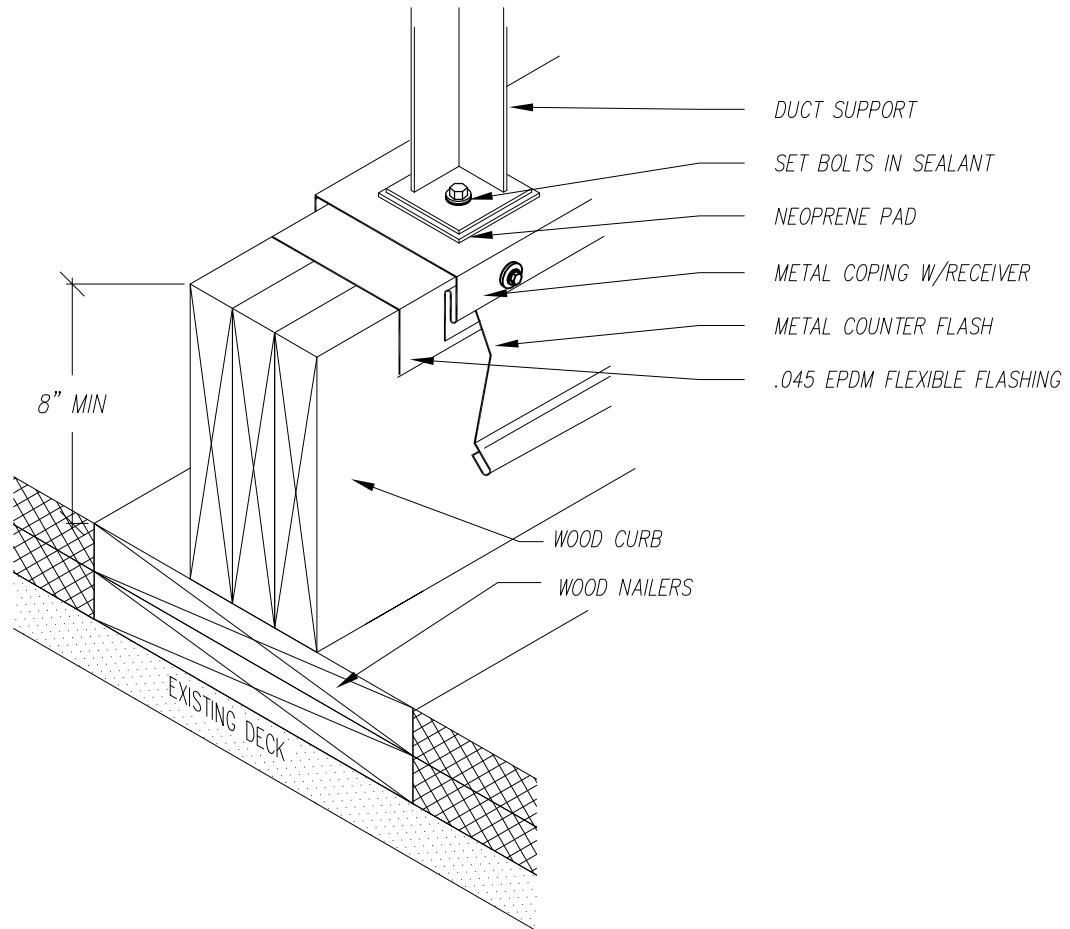
A2.25

NOTE:

- 1: THESE DRAWINGS ARE FOR INFORMATIONAL PURPOSES ONLY, CONSTRUCTION MAY VARY FOR DIFFERENT APPLICATIONS
- 2: SEE TABLE BELOW FOR REQUIRED HEIGHTS & WIDTHS

NOTE:

- REFER TO SPECIFICATIONS FOR
- 1: INSULATION TYPE & THICKNESS
- 2: ROOFING SYSTEM SPECIFICS



WIDTH OF EQUIPMENT	OFF FINISHED ROOF
UP TO 36"	18"
37" AND UP	36"

1
A2.26

WOOD BUILD DUCT SUPPORT DETAIL

NO SCALE:

Pressure Treated Plywood and Lumber: These products shall not be specified or provided for use in roofing projects as a substrate material



State of Wisconsin
Department of Administration
Division of Facilities Development

Agency / Institution:

TYPICAL DFD STANDARD
FULLY ADHERED EPDM DETAIL

Sheet Title:

DUCT SUPPORT DETAIL Rev-01/20/2014

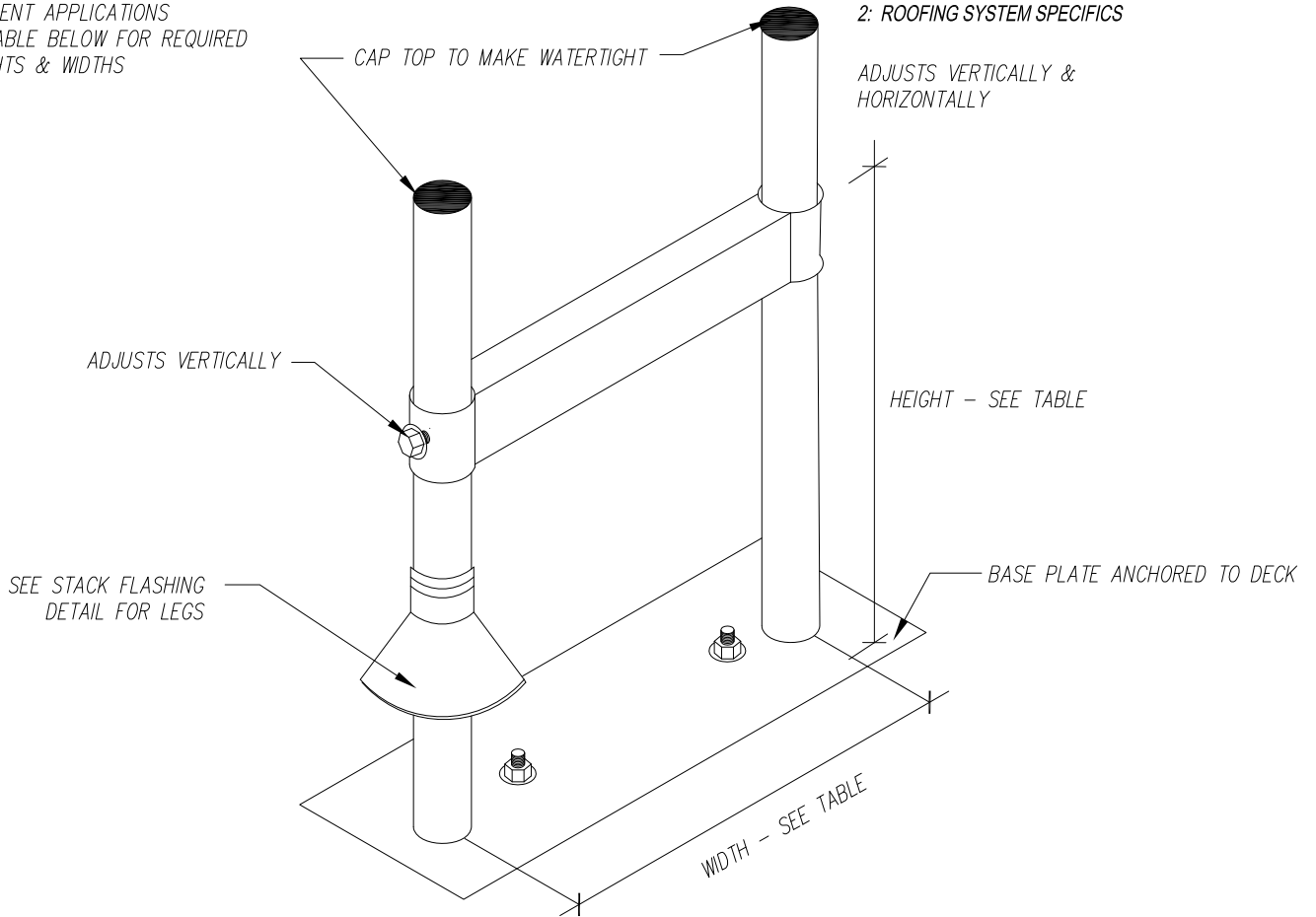
Scale	NO
DFD Number	
Set Type	RD.
Date Issued	
Sheet Number	A2.26

NOTE:

- 1: THESE DRAWINGS ARE FOR INFORMATIONAL PURPOSES ONLY, CONSTRUCTION MAY VARY FOR DIFFERENT APPLICATIONS
- 2: SEE TABLE BELOW FOR REQUIRED HEIGHTS & WIDTHS

NOTE:

- REFER TO SPECIFICATIONS FOR
- 1: INSULATION TYPE & THICKNESS
- 2: ROOFING SYSTEM SPECIFICS



WIDTH OF EQUIPMENT	OFF FINISHED ROOF
UP TO 36"	18"
37" AND UP	36"

1
A2.27

ADJUSTABLE DUCT SUPPORT DETAIL

NO SCALE:



State of Wisconsin
Department of Administration
Division of Facilities Development

TYPICAL DFD STANDARD
FULLY ADHERED EPDM DETAIL

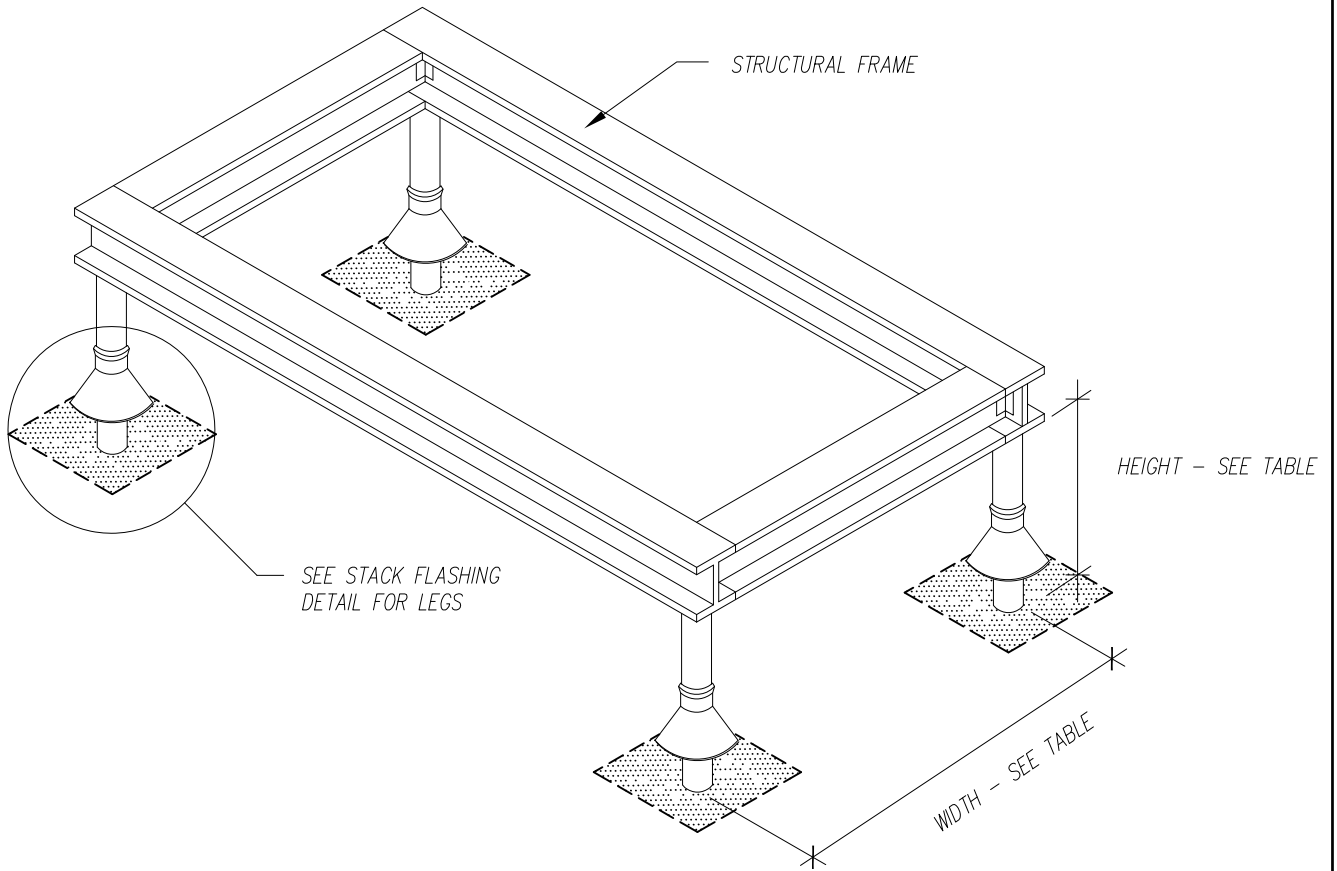
Scale	NO
DFD Number	
Set Type	RD.
Date Issued	
Sheet Number	A2.27

Agency / Institution:

Sheet Title:

DUCT SUPPORT DETAIL

Rev-01/20/2014



WIDTH OF EQUIPMENT	OFF FINISHED ROOF
UP TO 36"	18"
37" AND UP	36"

1
A2.28

 EQUIPMENT SUPPORT STAND DETAIL
 NO SCALE:



State of Wisconsin
 Department of Administration
 Division of Facilities Development

TYPICAL DFD STANDARD
 FULLY ADHERED EPDM DETAIL

Scale	NO
DFD Number	
Set Type	RD.
Date Issued	
Sheet Number	A2.28

Agency / Institution:

Sheet Title:

EQUIPMENT SUPPORT DETAIL Rev-01/20/2014