

# **STATE OF WISCONSIN CONTINUING DISCLOSURE ANNUAL REPORT**

FILED PURSUANT TO UNDERTAKINGS PROVIDED TO PERMIT COMPLIANCE WITH  
SECURITIES EXCHANGE COMMISSION RULE 15C2-12

## **GENERAL OBLIGATIONS**

(Base CUSIPs 977055, 977056, 97705L, and 97705M)

## **MASTER LEASE CERTIFICATES OF PARTICIPATION**

(Base CUSIP 977087)

## **TRANSPORTATION REVENUE OBLIGATIONS**

(Base CUSIP 977123)

## **CLEAN WATER REVENUE BONDS**

(Base CUSIP 977092)

## **ENVIRONMENTAL IMPROVEMENT FUND REVENUE BONDS**

(Base CUSIP 97709T)

## **PETROLEUM INSPECTION FEE REVENUE OBLIGATIONS**

(Base CUSIP 977109)

## **GENERAL FUND ANNUAL APPROPRIATION BONDS**

(Base CUSIP 977100)

**DECEMBER 23, 2015**



**WISCONSIN DEPARTMENT OF  
ADMINISTRATION**

**SCOTT WALKER**  
GOVERNOR

**SCOTT A. NEITZEL**  
SECRETARY

Division of Executive Budget and Finance  
Capital Finance Office  
Post Office Box 7864  
Madison, WI 53707-7864

TTY (608) 261-6630  
[www.doa.wi.gov/capitalfinance](http://www.doa.wi.gov/capitalfinance)

---

December 23, 2015

Thank you for your interest in the State of Wisconsin.

This is the Continuing Disclosure Annual Report for the fiscal year ending June 30, 2015 (**2015 Annual Report**).

The 2015 Annual Report provides information on different securities that the State issues and is provided under the State's continuing disclosure undertakings. These undertakings of the State are intended to help dealers and brokers comply with Rule 15c2-12 under the Securities Exchange Act of 1934. As of this date, the State has filed the 2015 Annual Report with the Municipal Securities Rulemaking Board (**MSRB**) through its Electronic Municipal Market Access (**EMMA**) system. EMMA receives, and makes available to the public, continuing disclosure documents and related information that is provided by issuers and obligated persons.

Official Statements for securities that the State issues during calendar year 2016 may incorporate parts of this 2015 Annual Report by reference.

### **Organization of the 2015 Annual Report**

The 2015 Annual Report is divided into nine parts. The first two parts present general information.

- **Part I** presents the **State's continuing disclosure undertakings**. A Master Agreement on Continuing Disclosure (Amended and Restated December 1, 2010) establishes a general framework. Separate addenda describe the information to be provided for specific types of securities.
- **Part II** presents **general information about the State**, including its operations and financial results. This part includes the General Purpose External Financial Statements portion of the audited Comprehensive Annual Financial Report for the fiscal year ending June 30, 2015. This part also provides information on the 2015-17 biennial budget and the results of the 2014-15 fiscal year.

The remaining parts present information about different types of securities that the State issues.

- **Part III – General obligations (including bonds, commercial paper, and extendible municipal commercial paper)**
- **Part IV – Master lease certificates of participation**

- **Part V – Transportation revenue obligations (including bonds and commercial paper)**
- **Part VI – Clean water revenue bonds**
- **Part VII – Environmental improvement revenue bonds**
- **Part VIII – Petroleum inspection fee revenue obligations (including bonds and extendible municipal commercial paper)**
- **Part IX – General fund annual appropriation bonds (including bonds and variable rate notes)**

### Ratings on the State's Securities

The following chart presents a summary of the long-term ratings currently assigned to different types of securities that the State issues.

<u>Security</u>	<u>Fitch Ratings</u>	<u>Kroll Bond Rating Agency, Inc.</u>	<u>Moody's Investors Service, Inc.</u>	<u>Standard &amp; Poor's Ratings Services</u>
General Obligations	AA	AA	Aa2*	AA
Master Lease Certificates of Participation	AA-	AA-	Aa3*	AA-
Transportation Revenue Bonds	AA+	AAA	Aa2	AA+
Clean Water Revenue Bonds	AA+	—	Aa1	AA+
Environmental Improvement Revenue Bonds	AAA	—	—	AAA
Petroleum Inspection Fee Revenue Bonds	AA	—	Aa2	AA
General Fund Annual Appropriation Bonds	AA-	—	Aa3*	AA-

\* On November 19, 2014 Moody's Investors Service, Inc. changed the outlook on the State's general obligations and appropriation credits from "stable" to "positive" along with affirming its current rating on those respective obligations.

### How to Get Additional Information

If you are interested in information about securities that the State issues, please contact the Capital Finance Office; *the Capital Finance Office is the only party authorized to speak on the State's behalf about the State's securities.*

The Capital Finance Office maintains a web site that provides access to both disclosure and non disclosure information. The Capital Finance Office posts to this web site general fund cash flow reports and all event and additional (voluntary) filings that it makes through MSRB's EMMA system.

[doa.wi.gov/capitalfinance](http://doa.wi.gov/capitalfinance)

We welcome your comments or suggestions about the 2015 Annual Report. I can be reached at (608) 267-0374 or [DOACapitalFinanceOffice@wisconsin.gov](mailto:DOACapitalFinanceOffice@wisconsin.gov).

Sincerely,

/s/ DAVID R. ERDMAN

David R. Erdman  
Capital Finance Director

**SUMMARY OF OUTSTANDING STATE OF WISCONSIN OBLIGATIONS  
AS OF DECEMBER 15, 2015**

	<u>Principal Balance 12/15/2014</u>	<u>Principal Issued 12/15/2014 - 12/15/15</u>	<u>Principal Matured, Redeemed, or Defeased 12/15/2014 - 12/15/15</u>	<u>Principal Balance 12/15/2015</u>
<b><u>GENERAL OBLIGATIONS<sup>(a)</sup></u></b>				
<b>Total</b>	<b>\$7,856,685,602</b>	<b>\$1,071,720,000</b>	<b>\$940,181,186</b>	<b>\$7,988,224,416</b>
General Purpose Revenue (GPR)	4,885,766,328	615,126,546	674,247,572	4,826,645,302
Self-Amortizing: Veterans	65,845,000	—	11,580,000	54,265,000
Self-Amortizing: Other	2,905,074,274	456,593,454	254,353,614	3,107,314,114
<b><u>MASTER LEASE CERTIFICATES OF PARTICIPATION</u></b>				
<b>Total</b>	<b>\$ 92,103,222</b>	<b>\$48,837,274</b>	<b>\$ 28,978,437</b>	<b>\$111,962,060</b>
<b><u>TRANSPORTATION REVENUE OBLIGATIONS<sup>(a)</sup></u></b>				
<b>Total</b>	<b>\$2,034,983,000</b>	<b>\$432,240,000</b>	<b>\$360,300,000</b>	<b>\$2,106,923,000</b>
<b><u>CLEAN WATER REVENUE BONDS</u></b>				
<b>Total</b>	<b>\$ 764,745,000</b>	<b>\$133,253,000</b>	<b>\$ 199,820,000</b>	<b>\$698,160,000</b>
<b><u>ENVIRONMENTAL IMPROVEMENT FUND REVENUE BONDS</u></b>				
<b>Total</b>	—	<b>\$43,380,000</b>	—	<b>\$43,380,000</b>
<b><u>PETROLEUM INSPECTION FEE REVENUE OBLIGATIONS<sup>(a)</sup></u></b>				
<b>Total</b>	<b>\$ 139,100,000</b>	—	<b>\$26,540,000</b>	<b>\$112,560,000</b>
<b><u>GENERAL FUND ANNUAL APPROPRIATION BONDS<sup>(a)</sup></u></b>				
<b>Total</b>	<b>\$3,179,230,000</b>	—	<b>\$63,295,000</b>	<b>\$3,115,935,000</b>

(a) This table also includes variable rate obligations that have been issued by the State.

# TABLE OF CONTENTS

	Page		Page
<b>PART V</b> <b>TRANSPORTATION REVENUE OBLIGATIONS</b>			
<b>INTRODUCTION</b> .....	150	The Program .....	176
<b>OUTSTANDING OBLIGATIONS</b> .....	151	Power of Amendment .....	176
<b>SECURITY</b> .....	154	Events of Default .....	177
Sources of Payment .....	154	Remedies.....	177
Program Income Covenant.....	155	Priority of Bonds After Default.....	178
Build America Bonds.....	155	Limitation on Rights of Bondholders .....	178
November 2014 Constitutional Amendment		Compensation of Fiduciaries.....	178
Referendum .....	155	Removal of Trustee.....	179
Reserve Fund.....	156	Defeasance.....	179
Additional Bonds .....	156	<b>GLOSSARY</b> .....	179
Forecasted Debt Service Coverage .....	156	<b>APPENDIX A—AUDITED FINANCIAL STATEMENTS..</b>	<b>186</b>
<b>REGISTRATION FEES</b> .....	<b>159</b>		
Current Fees and Registered Vehicles.....	159		
Estimated Future Registration Fees.....	161		
Registration Fee Collection Procedures .....	162		
<b>OTHER REGISTRATION-RELATED FEES</b> .....	<b>164</b>		
General .....	164		
Actual and Estimated Other Registration-			
Related Fees.....	165		
<b>PROJECTS</b> .....	<b>166</b>		
<b>VARIABLE RATE OBLIGATIONS</b> .....	<b>167</b>		
General .....	167		
Description of the Notes .....	168		
Liquidity Facility .....	168		
Description of the Liquidity Facility Providers.....	169		
<b>SUMMARY OF CERTAIN PROVISIONS OF THE</b>			
<b>GENERAL RESOLUTION</b> .....	<b>170</b>		
Resolution to Constitute Contract .....	171		
Provisions for Issuance of Bonds.....	171		
Additional Bonds .....	171		
Refunding Bonds .....	171		
Application of Bond Proceeds .....	171		
Establishment of Funds.....	172		
Capitalized Interest Account.....	172		
Program Account .....	172		
Redemption Fund.....	173		
Payment of Bonds.....	174		
Purchase of Bonds .....	174		
Program Expense Fund.....	174		
Reserve Fund .....	174		
Investments and Deposits .....	175		
Powers as to Bonds and Pledge.....	175		
Payment Covenant .....	175		
Tax Covenants .....	175		
Funds and Reports .....	176		
Budgets.....	176		

# TABLE OF TABLES

Table Page

---

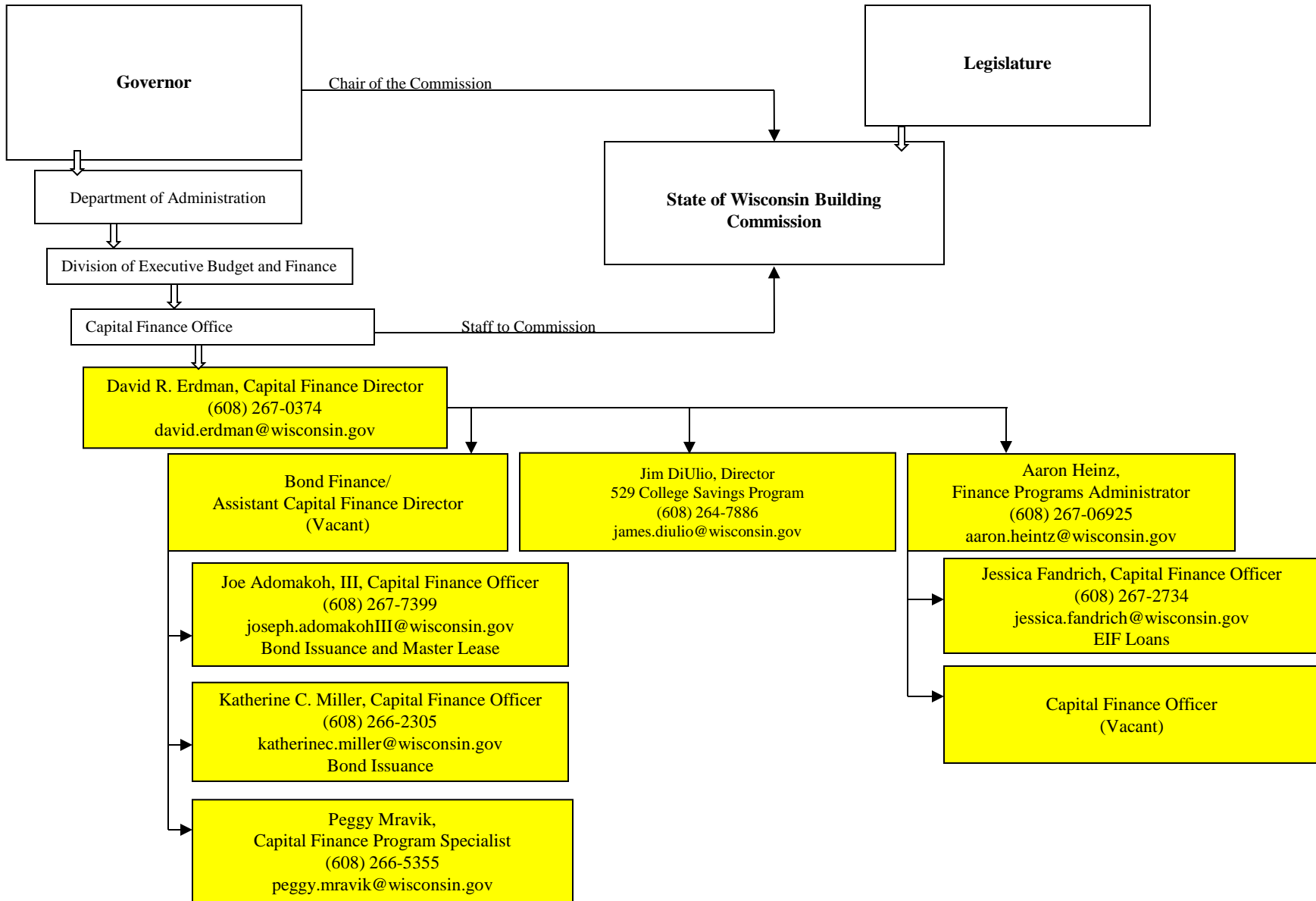
**PART V  
TRANSPORTATION REVENUE  
OBLIGATIONS**

---

V-1 Outstanding Transportation Revenue Obligations by Issue .....	152
V-2 Historical Outstanding Transportation Revenue Obligations .....	153
V-3 Debt Service on Outstanding Transportation Revenue Obligations and Estimated Revenue Coverage .....	158
V-4 Registration Fees .....	159
V-5 Actual Number of Motor Vehicle Registrations.....	159
V-6 Actual Registration Fee Revenues .....	160
V-7 Projected Registration Fee Revenues .....	161
V-8 Actual and Projected Other Registration-Related Fees	166
V-9 Summary of Outstanding Transportation Revenue Notes .....	167

---

# Capital Finance Office Staff (December 15, 2015)



# STATE OFFICIALS PARTICIPATING IN ISSUANCE AND SALE OF BONDS AND OTHER OBLIGATIONS

## BUILDING COMMISSION MEMBERS\*

### Voting Members

	Term of Office Expires
Governor Scott Walker, Chairperson	January 7, 2019
Senator Terry Moulton, Vice Chairperson	January 7, 2019
Senator Jerry Petrowski	January 7, 2019
Senator Janis Ringhand	January 7, 2019
Representative Mark Born	January 2, 2017
Representative Robb Kahl	January 2, 2017
Representative Rob Swearingen	January 2, 2017
Mr. Robert Brandherm, Citizen Member	At the pleasure of the Governor

### Nonvoting, Advisory Members

Vacant, State Chief Engineer Department of Administration	_____
Mr. Kevin Trinastic, State Ranking Architect Department of Administration	_____

### Building Commission Acting Secretary

Mr. Robinson J. Binau, Director Division of Facilities Development Bureau of Capital Budget and Construction Administration Department of Administration	At the pleasure of the Building Commission and the Secretary of Administration
---	--

## OTHER PARTICIPANTS

Mr. Brad D. Schimel State Attorney General	January 7, 2019
Mr. Scott A. Neitzel, Secretary Department of Administration	At the pleasure of the Governor

## DEBT MANAGEMENT AND DISCLOSURE

Department of Administration  
Capital Finance Office  
P.O. Box 7864  
101 E. Wilson Street, FLR 10  
Madison, WI 53707-7864  
Telefax (608) 266-7645  
[DOACapitalFinanceOffice@wisconsin.gov](mailto:DOACapitalFinanceOffice@wisconsin.gov)

Mr. David Erdman  
Capital Finance Director  
(608) 267-0374  
[DOACapitalFinanceOffice@  
wisconsin.gov](mailto:DOACapitalFinanceOffice@wisconsin.gov)

\* The Building Commission is composed of eight voting members. The Governor serves as the chairperson. Each house of the Wisconsin State Legislature appoints three members. State law provides for the two major political parties to be represented in the membership from each house. One citizen member is appointed by the Governor and serves at the Governor's pleasure.



## PART V

### TRANSPORTATION REVENUE OBLIGATIONS

Part V of the 2015 Annual Report provides information about transportation revenue obligations issued by the State of Wisconsin (**State**) in the form of transportation revenue bonds (**Bonds**) and transportation revenue commercial paper notes (**Notes**). Selected information is provided in this introduction for the convenience of the readers; however, all information presented in this Part V of the 2015 Annual Report should be reviewed to make an informed investment decision.

Total Outstanding Balance (12/15/2015)	\$2,106,923,000
Amount Outstanding of Fixed-Rate Obligations	1,989,795,000
Amount Outstanding of Variable-Rate Obligations	117,128,000
Percentage of Outstanding Obligations in form of Variable-Rate Obligations	5.56%
Ratings <sup>(a)</sup> (Fitch/Kroll <sup>(b)</sup> /Moody's/Standard & Poor's)	
Bonds	AA+/AAA/Aa2/AA+
Notes	F1+/P-1/A-1+
Authority	State of Wisconsin Transportation Facilities and Highway Projects Revenue Obligations General Resolution, dated June 26, 1986, as amended, and Subchapter II of Chapter 18 and Section 84.59, Wisconsin Statutes
Trustee/Paying Agent	The Bank of New York Mellon Trust Company, N.A. serves as Trustee for all obligations, as well as Registrar and Paying Agent for the Bonds. U.S. Bank National Association, serves as Issuing and Paying Agent for the Notes.
Security	The Bonds are secured by a first lien pledge of Program Income, the Funds created by the General Resolution, as amended, and any other income of the Program. The Notes are payable from Program Income deposited into the Subordinated Debt Service Fund; this pledge is subordinate to that granted to payment of the Bonds. Program Income includes vehicle Registration Fees authorized under Section 341.25, Wisconsin Statutes (which is a substantial amount of the Program Income) and certain Other Registration-Related Fees added pursuant to 2003 Wisconsin Act 33 (including, but not limited to, vehicle title transaction fees, registration and title counter service fees, and personalized license plate issuance and renewal fees).
Audit Report and Financial Statements	<b>APPENDIX A</b> to this Part V of the 2015 Annual Report includes the independent auditor's reports and the audited statements of cash receipts and disbursements.
<p><sup>(a)</sup> The ratings presented are the ratings assigned to the transportation revenue obligations without regard to any bond insurance policy. No information is provided in the 2015 Annual Report about any rating assigned to any transportation revenue obligations based on any bond insurance policy.</p> <p><sup>(b)</sup> While the State of Wisconsin applied for and received a rating on the transportation revenue bonds from Kroll Bond Rating Agency, at this time, Kroll has not been requested to rate the Notes for this credit.</p>	

*Contact:* Capital Finance Office  
Attn: Capital Finance Director  
*Phone:* (608) 267-0374  
*Mail:* State of Wisconsin Department of Administration  
101 East Wilson Street, FLR 10  
P.O. Box 7864  
Madison, WI 53707-7864  
*E-mail:* [DOACapitalFinanceOffice@wisconsin.gov](mailto:DOACapitalFinanceOffice@wisconsin.gov)  
*Web site:* [doa.wi.gov/capitalfinance](http://doa.wi.gov/capitalfinance)

The State of Wisconsin Building Commission (**Building Commission** or **Commission**) supervises all matters concerning the State's issuance of revenue obligations. The Capital Finance Office, which is part of the State of Wisconsin Department of Administration's Division of Executive Budget and Finance, is responsible for managing the State's borrowing programs. Requests for additional information about transportation revenue obligations may be directed to the Capital Finance Office. The law firm of Quarles & Brady LLP has provided bond counsel services in connection with the issuance of the outstanding transportation revenue obligations. The State of Wisconsin Department of Transportation (**DOT** or **Department of Transportation**) is responsible for the planning and completion of major highway projects funded, in part, with the proceeds of transportation revenue obligations.

Transportation revenue obligations have mostly been issued as tax-exempt obligations; however, in the years 2009 and 2010 a total of two series of taxable obligations were issued as "qualified build America bonds" pursuant to Section 54AA of the Internal Revenue Code of 1986, as amended (**Code**).

The 2015 Annual Report includes information and defined terms for different types of securities issued by the State. The context or meaning of terms used in one part of the 2015 Annual Report may differ from those of the same terms used in another part, and the total amount shown in a table may vary from the related sum due to rounding. See "**GLOSSARY**" for the definitions of capitalized terms used in this Part V of the 2015 Annual Report. No information or resource referred to in the 2015 Annual Report is part of the report unless expressly incorporated by reference.

Certain statements in this Part V of the 2015 Annual Report may be forward-looking statements that are based on expectations, estimates, projections, or assumptions. Any forward-looking statements are made as of the date of the 2015 Annual Report, and the State undertakes no obligation to update such statements to reflect subsequent events or circumstances. Actual results could differ materially from the anticipated results.

## **OUTSTANDING OBLIGATIONS**

The State has issued transportation revenue obligations on the dates and in the amounts shown in Table V-1. The table also includes the outstanding principal balances of the transportation revenue obligations as of December 15, 2015.

Table V-1

**OUTSTANDING TRANSPORTATION REVENUE  
OBLIGATIONS BY ISSUE  
(As of December 15, 2015)**

<u>Financing</u>	<u>Date of Financing</u>	<u>Maturity</u>	<u>Amount of Issuance</u>	<u>Amount Outstanding</u>
<i>Fixed-Rate Transportation Revenue Obligations</i>				
1986- Series A.....	6/15/86	1987-2007	\$ 139,055,000	-0-
1988- Series A.....	4/15/88	1989-2008	51,475,000	-0-
1989- Series A.....	4/15/89			
Serial Bonds .....		1990-2004	31,165,000	-0-
Term Bonds .....		2009	20,135,000	-0-
1991- Series A.....	10/1/91	1992-2011	105,660,000	-0-
1992- Series A.....	7/1/92			
Serial Bonds .....		1999-2006	96,945,000	-0-
Term Bonds .....		2009	22,260,000	-0-
Term Bonds .....		2012	3,520,000	-0-
Term Bonds .....		2022	16,880,000	-0-
Series B .....	7/1/92			
Serial Bonds .....		1993-2006	55,155,000	-0-
Term Bonds .....		2009	18,395,000	-0-
Term Bonds .....		2012	21,770,000	-0-
Term Bonds .....		2022	104,390,000	-0-
1993- Series A.....	9/1/93	1994-2012	116,450,000	-0-
1994- Series A.....	7/1/94			
Serial Bonds .....		1995-2012	84,320,000	-0-
Term Bonds .....		2014	15,680,000	-0-
1995- Series A.....	9/1/95	1996-2015	105,000,000	-0-
1996- Series A.....	5/15/96	1997-2016	115,000,000	-0-
1998- Series A (1998 Series A Bonds) .....	8/15/98	1999-2016	130,590,000	\$ 8,825,000
Series B .....	10/1/98			
Serial Bonds .....		2000-17	93,905,000	-0-
Term Bonds .....		2019	16,095,000	-0-
2000- Series A.....	9/15/00	2012-21	123,700,000	-0-
2001- Series A .....	11/15/01	2003-22	140,000,000	-0-
2002- Refunding Series 1.....	4/15/02	2003-19	241,865,000	-0-
Refunding Series 2.....	4/15/02			
Serial Bonds .....		2004-20	39,275,000	-0-
Term Bonds .....		2022	29,655,000	-0-
Series A.....	10/15/02	2004-23	200,000,000	-0-
2003- Series A.....	11/1/03	2005-24	250,000,000	-0-
2004- Refunding Series 1.....	9/30/04	2005-17	95,905,000	-0-
2005- Series A (2005 Series A Bonds) .....	3/10/05	2006-25	235,585,000	43,440,000 (a)
Series B .....	9/29/05	2007-25	158,400,000	-0-
2007- Series A.....	3/8/07	2018-27	148,710,000	-0-
2007- Refunding Series 1 (2007 Series 1 Bonds) .....	3/8/07	2014-22	206,900,000	200,070,000 (a)
2008- Series A (2008 Bonds) .....	8/27/08	2010-29	185,000,000	23,640,000 (a)
2009- Series A .....	10/1/09	2012-14	17,870,000	-0-
2009- Series B (Taxable) (2009 Series B Bonds) .....	10/1/09			
Serial Bonds .....		2015-25	87,725,000	81,335,000
Term Bonds .....		2030	59,405,000	59,405,000
2010- Series A (2010 Series A Bonds) .....	12/9/10	2012-21	76,075,000	50,005,000
Series B (Taxable) (2010 Series B Bonds) .....	12/9/10	2022-31	123,925,000	123,925,000
2012- Series 1 (2012 Series 1 Bonds) .....	4/25/12	2013-32	343,725,000	272,235,000
Series 2 (2012 Series 2 Bonds) .....	6/28/12	2017-24	116,400,000	116,400,000

<u>Financing</u>	<u>Date of Financing</u>	<u>Maturity</u>	<u>Amount of Issuance</u>	<u>Amount Outstanding</u>
2013- Series 1 (2013 Bonds).....	3/6/13	2016,18-21 23-33	\$ 259,680,000	\$ 259,680,000
2014- Series 1 (2014 Series 1 Bonds) .....	4/23/14	2015-34	339,745,000	224,465,000 <sup>(a)</sup>
Series 2 (2014 Series 2 Bonds) .....	12/10/14	2019-27	94,130,000	94,130,000
2015- Series 1 (2015 Series 1 Bonds) .....	4/30/15	2016-29	207,240,000	207,240,000
2015- Series A (2015 Series A Bonds) .....	12/10/15	2017-36	225,000,000	<u>225,000,000</u>
<i>Total Fixed-Rate Transportation Revenue Obligations</i>				<u>\$1,989,795,000</u>
<i>Variable-Rate Transportation Revenue Obligations</i>				
1997 - Commercial Paper Notes, Series A .....	5/7/97		\$ 157,763,000	\$ 31,468,000
2006 - Commercial Paper Notes, Series A .....	10/2/06		91,290,000	21,985,000
2013 - Commercial Paper Notes, Series A .....	11/5/13		70,025,000	<u>63,675,000</u>
<i>Total Variable-Rate Transportation Revenue Obligations</i>				<u>\$ 117,128,000</u>
<i>Total Outstanding Transportation Revenue Obligations</i>				<u><u>\$2,106,923,000</u></u>

<sup>(a)</sup> Pursuant to a refunding escrow agreement, the principal of and interest on all, or a portion of the Bonds, have been or will be paid as it comes due or will be called for redemption prior to maturity. The principal amount of Bonds for which payment is provided is treated as not outstanding for purposes of this table.

The 1998 Series A Bonds, 2005 Series A Bonds, 2007 Series 1 Bonds, 2008 Bonds, 2009 Series B Bonds, 2010 Series A Bonds, 2010 Series B Bonds, 2012 Series 1 Bonds, 2012 Series 2 Bonds, 2013 Bonds, 2014 Series 1 Bonds, 2014 Series 2 Bonds, 2015 Series 1 Bonds and 2015 Series A Bonds (collectively, **Prior Bonds**), together with any additional Bonds issued by the State pursuant to the General Resolution, are referred to collectively as the **Bonds**. See **“SECURITY; Sources of Payment”**. All other previously issued Bonds have been defeased or redeemed in full and are not Outstanding Bonds within the meaning of the General Resolution.

The Transportation Revenue Commercial Paper Notes (**Notes**) consist of the Transportation Revenue Commercial Paper Notes of 1997, Series A, the Transportation Revenue Commercial Paper Notes of 2006, Series A, and the Transportation Revenue Commercial Paper Notes of 2013, Series A. The Notes are issued pursuant to the General Resolution on parity with each other and any other obligations to be issued on parity with the Notes, and the pledge granted to the Notes is subordinate to the pledge granted to the Bonds. See **“VARIABLE RATE OBLIGATIONS”**.

From time to time, the Commission has adopted Series Resolutions that authorizes the issuance of transportation revenue obligations for refunding purposes. This authorization is generally effective for a period of one year from date of adoption. In addition, the Commission has adopted Series Resolutions that authorize the issuance of Bonds to pay for the funding of the Notes; these Series Resolutions are required pursuant to the terms of a credit agreement by which the liquidity facility providers provide a line of credit for liquidity on the Notes, and this authorization is effective for the term of the Notes. The Bonds to refund outstanding Bonds, any Bonds to fund new money purposes, and Bonds to take-out the Notes, when and if issued, are expected to be issued on a parity with the Bonds issued by the State pursuant to the General Resolution. In addition, any Notes issued to fund new money purposes are expected to be issued on a parity with the Notes.

**Table V-2** provides a historical view of the amount of outstanding Bonds and Notes as of December 15<sup>th</sup> for the previous ten years.

Table V-2

**HISTORICAL OUTSTANDING TRANSPORTATION REVENUE OBLIGATIONS**

<b>Year (December 15)</b>	<b>Outstanding Bonds</b>	<b>Outstanding Notes</b>	<b>Total</b>
2005	\$1,410,275,000	\$113,893,000	\$1,524,168,000
2006	1,338,635,000	198,758,000	1,537,393,000
2007	1,406,530,000	191,998,000	1,598,528,000
2008	1,511,135,000	177,618,000	1,688,753,000
2009	1,596,740,000	162,498,000	1,759,238,000
2010	1,719,545,000	146,593,000	1,866,138,000
2011	1,638,345,000	129,848,000	1,768,193,000
2012	1,693,935,000	112,218,000	1,806,153,000
2013	1,709,235,000	163,668,000	1,872,903,000
2014	1,890,880,000	144,103,000	2,034,983,000

**SECURITY****Sources of Payment**

The Prior Bonds have been issued on parity with each other. The Prior Bonds and any additional parity Bonds issued by the State pursuant to the General Resolution, are revenue obligations of the State payable solely from the Redemption Fund created by the General Resolution and are secured by a first lien pledge of Program Income, the Funds created by the General Resolution, and any other income of the Program pledged to the payment of interest, principal, and Redemption Price on the Bonds.

**Program Income** includes vehicle registration fees authorized under Section 341.25, Wisconsin Statutes (**Registration Fees**) and certain other vehicle registration-related fees added pursuant to 2003 Wisconsin Act 33 and a supplement to the General Resolution dated October 15, 2003 (**Other Registration-Related Fees**). The Other Registration-Related Fees include many types of fees that are enumerated in Wisconsin Statutes, however, many of the Other Registration-Related Fees result in insignificant or sporadic annual revenues. Given this insignificant and sporadic nature, the State is currently providing continuing disclosure on some, but not all, Other Registration-Related Fees. These specific Other Registration-Related Fees include vehicle title transaction fees, registration and title counter service fees, and personalized license plate issuance and renewal fees. See **“OTHER REGISTRATION-RELATED FEES.”**

All Program Income is collected by the Trustee, or the Department of Transportation as agent of the Trustee, and deposited outside the State Treasury in an account with the Trustee defined as the **Redemption Fund**. Program Income is defined to include all the interest earned or gain realized from the investment of the Redemption Fund.

The Notes, and any other obligations to be issued on parity with the Notes, are also revenue obligations of the State payable from Program Income deposited into the Subordinated Debt Service Fund created by the General Resolution. The pledge of such Program Income to payment of the Notes is subordinate to the pledge of Program Income granted to payment of the Bonds. The pledge remains effective until all Bonds and Notes issued under the General Resolution are fully paid in accordance with their terms.

*The Bonds are revenue obligations of the State payable solely out of the Redemption Fund. The Notes are revenue obligations of the State payable solely out of the Subordinated Debt Service Fund. The State is not generally liable on the Bonds and Notes, and the Bonds and the Notes are not a debt of the State for any purpose whatsoever.*

## **Program Income Covenant**

In the General Resolution, the State has covenanted that it will charge and cause to be deposited with the Trustee sufficient Program Income:

- To pay all interest on and principal of the Bonds as the same become due
- To maintain the Debt Service Reserve Requirement in the Reserve Fund
- To pay Program Expenses
- To pay principal of and interest on the Notes, as such amounts are deposited into the Subordinated Debt Service Fund
- To maintain the applicable requirements of such other funds and accounts specified under the General Resolution

Program Income received by the Trustee in the Redemption Fund is used in the above order. All Program Income in excess of the amounts needed for such purposes is to be transferred to the Transportation Fund held by the Department of Transportation and becomes free of the lien of the pledge of the General Resolution. DOT uses moneys in the Transportation Fund for many authorized purposes. See **“SUMMARY OF CERTAIN PROVISIONS OF THE GENERAL RESOLUTION”**.

The State pledges and agrees with the Bondholders and holders of Notes that the State will not limit or alter its powers to fulfill the terms of any agreements (made in the General Resolution, in the Bonds, or in the Notes) with the Bondholders and holders of Notes, or in any way impair the rights and remedies of the Bondholders and holders of Notes until the Bonds and Notes, together with interest, including interest on any unpaid installments of interest thereon, Redemption Price, and all costs and expenses in connection with any action or proceeding by or on behalf of the Bondholders and holders of Notes, are fully met and discharged.

## **Build America Bonds**

The direct payment the State expects to receive from the United States Treasury on each interest payment date, in connection with the 2009 Series B Bonds, 2010 Series B Bonds, which were designated as qualified “build America bonds”, is not Program Income and is not pledged to the payment of interest, principal, or Redemption Price on the Bonds or Notes.

With respect to the direct payments the State expects to receive, since such payments are not Program Income and not pledged to the payment on the Bonds or Notes, there is no direct impact on the Bonds or Notes with these direct payments being subject to the mandated across-the-board cuts to the Federal budget for the current federal fiscal year. The impact of these cuts for the current federal fiscal year is a 6.8% reduction in the direct payment amount that the State expected to receive.

## **November 2014 Constitutional Amendment Referendum**

A constitutional amendment referendum question was approved in the State’s general election on November 4, 2014. The constitutional amendment requires most revenues generated by use of the State’s transportation system be deposited with a trustee for the benefit of the Department or the holders of transportation-related revenue bonds (such as Bondholders and holders of the Notes) or into the Transportation Fund administered by the Department for the exclusive purpose of funding the State’s transportation systems. The constitutional amendment further prohibits any transfers or lapses from this Transportation Fund.

This constitutional amendment has no direct impact on Bondholders and holders of the Notes. Pursuant to the General Resolution, Program Income will continue to be first collected by the Trustee and deposited outside the State Treasury in the Redemption Fund and Subordinated Debt Service Fund. After all General Resolution requirements are met, excess Program Income is then transferred to the State’s Transportation Fund. See **“SECURITY; Program Income Covenant”** above. At that time, the revenues will then be subject to the requirements of this constitutional amendment.

## Reserve Fund

The General Resolution creates a Reserve Fund for the Bonds; however, the balance of the Reserve Fund is \$0.00.

The State pursuant to each Series Resolution specifies the Debt Service Reserve Requirement, if any, for each Series of Bonds. The individual Debt Service Reserve Requirements for each Series of the Outstanding Bonds are combined to determine the aggregate Debt Service Reserve Requirement for the Reserve Fund. If all of the Bonds of a Series cease to be Outstanding, then the aggregate Debt Service Reserve Requirement is reduced by the Debt Service Reserve Requirement attributable to that Series of Bonds. Since 2003, the State has not specified a Debt Service Reserve Requirement for any Series of Bonds that have been issued. Furthermore, the State does not currently expect to specify a Debt Service Reserve Requirement for any future Series of additional Bonds; however, the State reserves the right to change its practice and no representation is made as to the amount of the Debt Service Reserve Requirement that the State may specify for any future Series of additional Bonds.

In the event that the Reserve Fund were to be funded in connection with a future Series of Bonds, the General Resolution provides that it shall be used to make up any deficiency in the Redemption Fund for the payment of principal of and interest on all of the-then Outstanding Bonds. If there is a deficiency in the Reserve Fund, the Trustee shall, after setting aside in the Principal and Interest Account the applicable amount required to be deposited therein, deposit Program Income into the Reserve Fund in an amount sufficient to remedy such deficiency.

## Additional Bonds

The General Resolution authorizes the issuance of additional Bonds for the purpose of paying the costs of Projects, funding reserves, paying costs of issuance, and refunding Outstanding Bonds. Except in the case of additional Bonds being issued to refund Outstanding Bonds, the Series of additional Bonds may be issued only if Program Income for any 12 consecutive calendar months of the preceding 18 calendar months was at least equal to 2.25 times the maximum aggregate Principal and Interest Requirement in any Bond Year for all Outstanding Bonds, which includes the Bonds to be issued. The General Resolution defines Outstanding Bonds, as of any particular date, as all Bonds theretofore and thereupon being delivered except:

- Any Bond canceled by the Trustee, or proven to the satisfaction of the Trustee to have been canceled by the Registrar
- Any Bond deemed to have been defeased pursuant to the General Resolution
- Any Bond in lieu of or in substitution for which another Bond shall have been delivered pursuant to the requirements of the General Resolution or any Series Resolution

Statutory authority exists for the issuance of a total of \$3.931 billion of transportation revenue obligations to finance a portion of major highway projects. Approximately \$182 million of legislative authority remains unissued. The issuance of transportation revenue obligations for the above purposes beyond the legislative authorized amount would require additional legislative authorization.

In addition, upon the issuance of additional Bonds the amount on deposit in the Reserve Fund must at least equal the aggregate Debt Service Reserve Requirement. See “**SUMMARY OF CERTAIN PROVISIONS OF THE GENERAL RESOLUTION; Additional Bonds**” and “**Reserve Fund**”.

## Forecasted Debt Service Coverage

**Table V-3** provides a summary of annual debt service due on the Outstanding Bonds and shows the forecasted coverage of annual debt service on the Outstanding Bonds as of December 15, 2015, based on the Department of Transportation’s estimated total Program Income for fiscal years 2016 through 2025. The estimated Program Income includes both Registration Fees and certain Other Registration-Related Fees for this period. See “**REGISTRATION FEES; Estimated Future Registration Fees**” and “**OTHER**”

**REGISTRATION-RELATED FEES**". There can be no assurance that the following estimates will be realized in the amounts shown.

In addition, **Table V-3** also provides the expected amortization of the Outstanding Notes and shows the forecasted coverage of annual debt service on both the Outstanding Bonds and the Outstanding Notes, with the latter reflecting the Subordinated Debt Service Fund Requirement for each respective series of Notes with interest calculated at an assumed interest rate of 5% per annum.

The Department of Transportation will monitor Registration Fee and Other Registration-Related Fee revenues as they relate to scheduled debt service payments on the Bonds and payments on the Notes and recommend appropriate adjustments in Registration Fees or Other Registration-Related Fees to the Governor and the Legislature. The State has covenanted in the General Resolution that as long as Bonds and Notes are Outstanding it will charge and cause to be deposited with the Trustee sufficient Program Income, including Registration Fees and Other Registration-Related Fees, to pay principal and interest on such Bonds, as the same become due, to maintain the Reserve Fund at the Debt Service Reserve Requirement, to pay Program Expenses, and to make payments into the Subordinated Debt Service Fund.

Neither the State's independent auditors nor any other independent accountants have compiled, examined, or performed any procedures with respect to the prospective financial information shown above, nor have they expressed any opinion or any other form of assurance on such information or its achievability and assume no responsibility for and disclaim any association with the prospective financial information.



Table V-3

**DEBT SERVICE ON OUTSTANDING TRANSPORTATION REVENUE OBLIGATIONS AND ESTIMATED REVENUE COVERAGE**

Maturity (July 1)	Estimated Program Income <sup>(a)</sup>			Outstanding Bonds <sup>(b)(d)*</sup>				Outstanding Notes <sup>(b)(c)(d)</sup>				
	Estimated Registration Fees (Millions)	Other Registration- Related Fees (Millions)	Total Program Income <sup>(b)</sup> (Millions)	Total Principal	Total Interest	Total Debt Service	Coverage Ratio	Total Principal- Notes	Estimated Total Interest - Notes	Estimated Total Debt Service - Notes	Estimated Total Debt Service - Bonds and Notes	Coverage Ratio
2016	\$564.01	\$96.09	\$660.10	\$102,395,000	\$94,774,103	\$197,169,103	3.35	28,405,000	5,856,400	34,261,400	231,430,503	2.85
2017	565.99	96.09	662.08	103,350,000	93,614,940	196,964,940	3.36	29,915,000	4,436,150	34,351,150	231,316,090	2.86
2018	584.98	96.09	681.07	119,605,000	88,619,063	208,224,063	3.27	16,153,000	2,940,400	19,093,400	227,317,463	3.00
2019	586.37	96.09	682.46	124,735,000	82,819,902	207,554,902	3.29	7,720,000	2,132,750	9,852,750	217,407,652	3.14
2020	605.13	96.09	701.22	131,990,000	76,684,758	208,674,758	3.36	8,105,000	1,746,750	9,851,750	218,526,508	3.21
2021	606.42	96.09	702.51	136,235,000	70,203,337	206,438,337	3.40	8,510,000	1,341,500	9,851,500	216,289,837	3.25
2022	624.92	96.09	721.01	135,710,000	63,533,108	199,243,108	3.62	8,935,000	916,000	9,851,000	209,094,108	3.45
2023	624.23	96.09	720.32	122,055,000	56,873,491	178,928,491	4.03	9,385,000	469,250	9,854,250	188,782,741	3.82
2024	641.09	96.09	737.18	123,545,000	50,834,182	174,379,182	4.23					
2025	640.77	96.09	736.86	111,770,000	44,618,773	156,388,773	4.71					
2026				99,715,000	39,065,792	138,780,792						
2027				106,750,000	34,170,122	140,920,122						
2028				93,935,000	28,663,595	122,598,595						
2029				98,750,000	23,775,310	122,525,310						
2030				90,100,000	18,621,888	108,721,888						
2031				80,660,000	13,881,975	94,541,975						
2032				68,505,000	9,835,175	78,340,175						
2033				57,605,000	6,605,325	64,210,325						
2034				44,490,000	3,984,825	48,474,825						
2035				18,485,000	1,894,750	20,379,750						
2036				19,410,000	970,500	20,380,500						
				<u>\$1,989,795,000</u>	<u>\$904,044,915</u>	<u>\$2,893,839,915</u>		<u>\$117,128,000</u>	<u>\$19,839,200</u>	<u>\$136,967,200</u>		

- (a) The estimated fees for 2016 through 2025 reflect revenue projections completed by the Department in October 2015. Excludes interest earnings.
- (b) Does not reflect or include the direct payment the State is expected to receive from the United States Treasury on each interest payment date in the amount of 35% of the interest payable by the State on such date for the 2009 Series B Bonds and the 2010 Series B Bonds, each designated as qualified "build America bonds".
- (c) Reflects principal component of the respective Subordinated Debt Service Fund Requirement and assumed interest rate of 5.00%.
- (d) Assumes that no additional Bonds will be issued and continuation of current Registration Fees and Other Registration-Related Fees. Estimates of Program Income and coverage beyond 2025 are not currently available.

## REGISTRATION FEES

### Current Fees and Registered Vehicles

Registration Fees as enumerated under Section 341.25 Wisconsin Statutes are highway user fees collected by the Department of Transportation from owners of most motor vehicles. [Table V-4](#) summarizes the types of major Registration Fees and the specific fee.

**Table V-4**

Vehicle	Annual Fee
Automobile	\$75
Trucks	Weight-based fee ranging from \$75 to \$2,560.
Bus	Fee equal to the fee for a truck of the same weight.
Trailer 12,000 lbs. and under	Fee equal to one-half of the fee for a truck of the same weight.
Trailer over 12,000 lbs.	Fee equal to the fee for a truck of the same weight.
Motor Homes	Weight-based fee ranging from \$48.50 to \$119.50.
Mobile Homes and Camping Trailers	\$15
Motorcycle/Moped	\$23 biennial fee.

**Source: Department of Transportation**

[Table V-5](#) summarizes the number of motor vehicle registrations in the State, subject to Registration Fees under Section 341.25, Wisconsin Statutes, for the past ten years.

**Table V-5**

### ACTUAL NUMBER OF MOTOR VEHICLE REGISTRATIONS<sup>(a)</sup> (Millions of Vehicles)

Fiscal Year (June 30)	Automobiles <sup>(b)</sup>	Trucks <sup>(c)</sup>	Other Vehicles <sup>(d)</sup>	Total	% Change
2006	3.41	1.14	.89	5.44	—
2007	3.47	1.14	.97	5.58	2.5%
2008	3.52	1.14	.98	5.64	1.0
2009	3.51	1.13	1.07	5.71	1.2
2010	3.52	1.11	1.07	5.70	(0.2)
2011	3.52	1.12	1.14	5.78	1.4
2012	3.53	1.12	1.12	5.77	(0.2)
2013	3.59	1.14	1.20	5.92	2.7
2014	3.62	1.15	1.17	5.94	0.3
2015	3.66	1.18	1.27	6.11	2.8

<sup>(a)</sup> In fiscal year 2005, the methodology for reporting vehicle registrations was changed from vehicle frame-based to vehicle registration-type. All of the information in this table reflects the use of the new vehicle registration-type methodology.

<sup>(b)</sup> “Automobiles” include autos, minivans, and sport utility vehicles.

<sup>(c)</sup> “Trucks” includes trucks and other vehicles that pay Registration Fees based on the vehicle’s gross weight.

<sup>(d)</sup> “Other Vehicles” include mobile homes, motorcycles, mopeds, buses, and several other vehicle types.

**Source: Wisconsin Department of Transportation**

**Table V-6** summarizes the total amount of Registration Fee revenues, under Section 341.25, Wisconsin Statutes, for the past ten years.

**Table V-6**

**ACTUAL REGISTRATION FEE REVENUES**  
(Amounts in Millions)

<b>Fiscal Year (June 30)</b>	<b>Non-IRP Fees</b>	<b>Pledged IRP Fees</b>	<b>Total</b>	<b>% Change</b>
2006	\$333.6	\$62.7 <sup>(a)</sup>	\$396.3	—
2007	322.6	62.2	384.8	(2.9)%
2008 <sup>(b)</sup>	385.4	71.8	457.2	18.8
2009 <sup>(b)</sup>	435.5	75.3	510.8	11.7
2010	444.4	75.3	519.7	1.7
2011	433.0	76.8	509.8	(1.9)
2012	445.0	81.1	526.1	3.2
2013	440.1	82.8	522.8	(0.6)
2014	458.9	85.5	544.4	4.1
2015	459.5	87.9	547.4	0.6

<sup>(a)</sup> The Pledged IRP fees for fiscal years 2005 and 2006 were revised and restated to reflect a correction in the recording of revenue obtained through the IRP program.

<sup>(b)</sup> The increase in fiscal years 2008 and 2009 reflects the \$20 increase in registration fees for automobiles, along with other fee increases for other vehicle types, which went into effect on January 1, 2008.

**Source: Wisconsin Department of Transportation**

Interstate truck registration revenues are collected through the International Registration Plan (IRP) and is a component of Registration Fees. Wisconsin is one of 48 states, the District of Columbia, and ten Canadian provinces that participate in the IRP, which is a multi-state compact for the collecting and sharing of large truck registration fees. Under the IRP, the registration fees on trucks involved in multi-state commercial activity are split between the participating states on the basis of proportionate mileage.

The total amount of Registration Fee revenues for fiscal year 2015 are generated from three broad categories of vehicles:

- (1) 53.8% of total revenues generated from registration of passenger vehicles (automobiles, mini-van, conversion vans, and sport-utility vehicles).
- (2) 15.5% of total revenues generated from registration of small trucks (8,000 pounds or less gross weight).
- (3) 30.7% of total revenues generated from registration of large trucks (over 8,000 pounds gross weight plus IRP vehicles).

Table V-6 reflects the steady rate of growth that has occurred in non-IRP Registration Fee revenues over the past ten years. In fiscal years 2008 and 2009 the percentage change reflects an increase in Registration Fees that occurred during that specific fiscal year.

The 2007-09 biennial budget (2007 Wisconsin Act 20) increased the Registration Fees for most vehicle types effective January 1, 2008. Registration Fee increases authorized in the 2007-09 budget include:

- \$20 increase in the automobile fee.
- Increase in truck fees ranging from \$22.50 to \$590.00.
- Increase in various truck and trailer fees ranging from \$6.75 to \$590.50.

In addition, the 2003-05 biennial budget previously increased the automobile fees from \$45 to \$55, effective October 1, 2003.

Finally, the pattern of Registration Fees being lower in odd-numbered fiscal years reflects, in part, some vehicle types such as motorcycles and mopeds being registered only on a biennial basis. In a period of relatively flat vehicle registrations, the effect of this biennial registration becomes more apparent.

### Estimated Future Registration Fees

Future Registration Fee revenues depend on the size of the vehicle fleet in subsequent years and the level of fees imposed on the various vehicle types. The methodology for Registration Fee revenue projections consists of two components:

- Projection of registration by vehicle type by an econometric model developed by DOT, which relates the size of the vehicle fleet to anticipated changes in certain key economic variables
- Application of the relevant registration fee to the projection of registered vehicle type

The Department of Transportation’s model has two distinct components:

- Anticipated changes in the size of the State’s automobile fleet
- Anticipated changes in the size of the State’s truck fleet

The econometric model relates the size of the automobile fleet and truck fleet to the disposable income in the State, the relative price of new autos and light trucks, the level of unemployment, the size of the driving age population, historical rates of vehicle scrappage, construction employment in the State, and a measure of consumer sentiment. The long-range economic data used in the model are based on the projections published by IHS Global Insight, Inc., as well as the State of Wisconsin Department of Revenue.

**Table V-7** summarizes projected Registration Fee revenues pursuant to Section 341.25, Wisconsin Statutes, until fiscal year 2025. These projections were completed by DOT in October 2015. The percentage change from actual registration fees for the 2014-15 fiscal year to the projected registration fees for fiscal year 2016 is an increase of 3.0%.

**Table V-7**

**PROJECTED REGISTRATION FEE REVENUES**  
(Amounts in Millions)

Fiscal Year (June 30)	Revenues <sup>(a)</sup>	% Change
2016	\$ 564.0	—
2017	566.0	0.4%
2018	585.0	3.4
2019	586.4	0.2
2020	605.1	3.2
2021	606.4	0.2
2022	624.9	3.1
2023	624.2	(0.1)
2024	641.1	2.7
2025	640.8	(0.1)

<sup>(a)</sup> Includes both IRP and non-IRP Registration Fees pursuant to Section 341.25, Wisconsin Statutes. Does not include Other Registration-Related Fees, which are addressed later in this Part V of the 2015 Annual Report.

Source: Department of Transportation

Neither the State’s independent auditors nor any other independent accountants have compiled, examined, or performed any procedures with respect to the prospective financial information shown above, nor have

they expressed any opinion or any other form of assurance on such information or its achievability and assume no responsibility for and disclaim any association with the prospective financial information.

### **Registration Fee Collection Procedures**

Registration Fees are collected throughout the fiscal year. In order to smooth out the Department of Transportation's vehicle registration workload, it has staggered vehicle registrations throughout the year. As a result, in fiscal year 2015 the flow of quarterly collections of annual Registration Fee revenues ranged from a low of 21.9% to a high of 26.5%. Any future adjustment of Registration Fees may change the monthly distribution of Registration Fees collected.

The Department of Transportation is the agent of the Trustee with respect to the collection of Registration Fees, pursuant to an agreement between these parties. The non-IRP Registration Fees are collected in a number of ways:

- By mail to a lock-box system operated by U.S. Bank, National Association (**Bank**)
- Over the counter in field registration stations
- By mail to the Department of Transportation's Central office in Madison (**Central Office**)
- At vehicle emission testing stations
- By State auto, light truck, and motorcycle dealers
- Via internet charge card renewal system
- By financial institutions
- By private financial service centers
- By various retailers, such as grocery stores and convenience stores
- By law enforcement agencies
- By municipal and County Clerk offices, as well as some municipal courts

Regardless of the method of collection, all Registration Fees are initially deposited with the Trustee for deposit in the Redemption Fund.

The principal method of collecting non-IRP Registration Fees is registration renewals by mail, which are sent directly to the Bank operating the lock-box system as agent for the Trustee. Under this lock-box system the vehicle owner mails the renewals to the Bank. The renewal includes a check payable to "Registration Fee Trust" and an enclosure with relevant registration information on it. The Bank is to deposit its receipts of Registration Fees daily with the Trustee for deposit in the Redemption Fund.

Over-the-counter collections take place in 33 Division of Motor Vehicle Customer Service Centers (**DMV CSC**) throughout the State. These DMV CSCs collect Registration Fees on behalf of the Trustee, as well as driver license fees, title fees, lien fees, salesman's license fees, permit fees, disabled identification card fees, and various other Department of Transportation charges. The Department of Transportation's financial system is a transaction-based computer system with the field stations linked to the DOT's Central Office by terminal. All transactions are summarized daily and reported to the Central Office. The DMV CSCs deposit their collections in an account in the Trustee's name for deposit in the Redemption Fund.

Collections at the Department of Transportation's Central Office differ from DMV CSC collections in that it is primarily IRP payments and mail applications that are processed. IRP payments consist of checks submitted by individual truck operators, as well as checks generated by other states transmitting IRP payments to the State. Mail applications handled through the Central Office are primarily associated with the registration of vehicles that involve the transfer of ownership. All checks and cash collected through the Central Office are delivered to the Trustee for deposit in the Redemption Fund.

The Department of Transportation has a contract with a vehicle emission contractor to collect Registration Fees at any of the emission testing facilities. Currently, there are around 200 independently owned facilities throughout the seven county emission program area. A registrant may choose to renew their registrations at a testing station. Under this method, the emission testing station is treated like a field registration station with a direct connection to the Central Office's terminal. The vendor retains a service fee charged to registrants who use this option.

Licensed motor vehicle dealers are required by law to process vehicle title and registration transactions for their customers, unless exempted by the Department. The Department of Transportation has a series of contracts with car, light truck, and motorcycle dealers to process vehicle title and registration and transmit such information electronically to it through an interface managed by a third-party vendor. The contracts provide an electronic interface between the Department of Transportation and the dealer's data processing systems. The dealer collects registration and other fees that are electronically transferred daily from their bank accounts to the Department of Transportation by the third-party vendor. The vendor retains a service fee charged to registrants who use this option. In addition, dealers may choose to process title and registration applications electronically through an internet-based system managed by the Department.

Internet charge card renewal is a system available to motorists who prefer to charge their vehicle registration renewals. Under this system, motorists can renew their registrations through the internet. The Department of Transportation has contracted with a banking vendor to handle the interfaces and transmission of data to a credit card processing vendor. The vendor transfers all monies collected from these transactions daily, through a wire transfer to the Department of Transportation's account and then to the Trustee for deposit in the Redemption Fund. The vendor retains a service fee charged to registrants who use this option. Charge cards are also accepted at DMV CSCs. The Department of Transportation has contracted with the same banking vendor and credit card processing vendor to provide the necessary interfaces. The processing vendor charges a service fee and this fee is passed onto customers who use this option.

Financial institutions are required by law to process stand-alone lien add and release transactions electronically for customers, unless exempted by the Department of Transportation. Lenders may use contracted third party vendors or a free electronic interface provided by the Department of Transportation. In addition, the Department of Transportation runs a voluntary program for financial institutions, State agencies, and small businesses to contract in order to process titles and registrations and transmit the information through an electronic interface, provided by a separate vendor, to itself and the approved business. These contracted agents collect registration and other fees that are electronically transferred daily from the financial institution to the Trustee for deposit into the Redemption Fund. The vendor retains a service fee charged to registrants who use this option.

Registrants may renew vehicle registrations at private financial service centers. The Department of Transportation has contracted with a separate vendor to handle the electronic interface and transmission of data. The financial service centers collect Registration Fees that are electronically transferred daily from the center to the Trustee for deposit into the Redemption Fund. The vendor retains a service fee charged to registrants who use this option.

Registrants may also renew vehicle registration at participating retailers, law enforcement agencies, and municipal and County Clerk offices as well as some municipal courts. The Department of Transportation has contracted with a separate vendor to handle the electronic interface and transmission of data. The retailers, law enforcement agencies, and County Clerk offices collect Registration Fees that are electronically transferred daily from the participating agent to the Trustee for deposit into the Redemption Fund. The vendor retains a service fee charged to registrants who use this option.

## OTHER REGISTRATION-RELATED FEES

### General

Pursuant to provisions of 2003 Wisconsin Act 33 and the supplement to the General Resolution, adopted by the Commission on October 15, 2003, Other Registration-Related Fees are pledged as Program Income. The Other Registration-Related Fees include more than 60 types of fees that are enumerated in Wisconsin Statutes, however, many of the Other Registration-Related Fees result in insignificant or sporadic annual revenues. Given this insignificant and sporadic nature, the State is currently providing continuing disclosure on some, but not all, Other Registration-Related Fees. These specific Other Registration-Related Fees include vehicle title transaction fees, registration and title counter service fees, and personalized license plate issuance and renewal fees.

#### *Vehicle Title Transaction Fees*

The Wisconsin Statutes require all motor vehicles and trailers exceeding 3,000 pounds to be titled. Titling occurs prior to vehicle registration and the resulting Certificate of Title is evidence of vehicle ownership. The Department of Transportation issues a title when ownership of the vehicle has been confirmed. This occurs when a vehicle is purchased from a dealer, or when vehicles are transferred between individuals in a non-dealer sale. Titling occurs only when vehicle ownership changes and is not an annual reoccurring fee.

The Certificate of Title document is issued on secured paper stock and contains the following information: name and address of owner, description of vehicle (make, year, color, vehicle type, and vehicle identification number), name of the secured party or lien holder, odometer reading information, and other required information.

The title fees are enumerated in Section 342.14, Wisconsin Statutes and is currently \$69.50. The title fee is comprised of two components; \$62.00 title fee and \$7.50 supplemental title fee. The \$69.50 title fee is paid by the owner when filing an application for first Certificate of Title, and by the buyer when filing an application for Certificate of Title after transfer of ownership of the vehicle. The titling fees are paid to the Department of Transportation at the same time the vehicle is registered. The replacement, or duplicate, title fee is currently \$20.00. Replacement titles are issued for lost, stolen, or mutilated titles.

From fiscal year 2011 to 2015, the Department of Transportation averaged the issuance of approximately 1.3 million titles each year, whereby a title fee was collected. In fiscal year 2015, the Department of Transportation issued 1.4 million titles.

#### *Registration and Title Counter Service Fees*

Customers have the option of processing their vehicle titling and registration transactions by mail or in person at a DMV CSC. If the transaction is processed at the DMV CSC, the customer is charged an additional fee for that service. The additional fee is intended to recover some of the cost of providing face-to-face service. Before the customer receives the various products, the counter fee, and titling and/or vehicle Registration Fees are collected.

The counter fee is enumerated in Section 341.255, Wisconsin Statutes. For transactions that renew a vehicle registration, the counter fee is \$3, however a \$5 counter fee is charged for transactions relating to the issuance of a Certificate of Title, issuance of temporary license plates, issuance of temporary or permanent parking permits for disabled persons, transactions involving both titling and registration for the same vehicle, or transactions relating to only vehicle registration (but not renewals).

The average volume of registration renewals for calendar years 2010 through 2014 was 400,851 transactions at the DMV CSCs. The calendar year 2014 volume at the DMV CSC for renewals was 406,750. The average volume of titling, temporary plates, hang tags, and registrations for calendar years 2010 through 2014 was 1,371,054 transactions at the DMV CSCs. The calendar year 2014 volume at the DMV CSCs for titling, temporary plates, hang tags, and registrations was 1,460,175. The Department of Transportation previously misstated the volume of titling, temporary plates, hang tags and registrations

for calendar year 2013 and the average for calendar years 2009 through 2013; for calendar year 2013, the volume should have been 1,370,090 rather than the 698,289 that was previously disclosed.

#### *Personalized License Plate Fees*

Personalized license plates are license plates whereby the registration number is composed of a maximum set of numbers or letters or both specifically requested by the customer. The personalized license plate is only available for certain vehicle types: automobiles, motorcycles, motor homes, motor trucks with a gross weight of no more than 8,000 pounds, and farm trucks with a gross weight of no more than 12,000 pounds.

During the initial vehicle registration process or any time a registrant desires to change a license plate message, an applicant must complete and return to the Department of Transportation a special application form specifying the desired personalized message and provide two alternate messages. Subject to approval by the Department of Transportation, the customized license plate is then manufactured and sent to the customer.

The personalized license plate fee is enumerated in Section 341.145, Wisconsin Statutes. The \$15 annual fee must be submitted with the application and is also due annually at the time of vehicle registration renewals. This fee is in addition to the regular Registration Fees. For motorcycles and farm trucks that receive biennial license plates, the personalized license plate fee is also \$15 a year, due with the initial application. The fee to maintain a personalized plate issued on a biennial basis is \$30, payable during registration renewal and is in addition to the regular biennial Registration Fee.

The average number of requests for new personalized license plates processed for calendar years 2010 through 2014 was 21,040. The average number of annual personalized license plate registrations during calendar years 2010 through 2014 was 231,402. At the end of calendar year 2014, the State had 225,069 registered personalized license plates.

#### **Actual and Estimated Other Registration-Related Fees**

Table V-8 provides further information on the amount of Other Registration-Related Fees described above in **“OTHER REGISTRATION-RELATED FEES; General”**. These amounts include actual collections for the past ten years and projections for the upcoming ten years; the projected Other Registration-Related Fees are for fiscal years 2016 through 2025.

The Other Registration-Related Fees include many types of fees that are enumerated in the Wisconsin Statutes; while all are Program Income, the certain Other Registration-Related Fees outlined by the box in Table V-8 are those fees for which the State is currently providing continuing disclosure. See **Table V-3** for the total of Registration Fees and the Other Registration-Related Fees being used for ratings and continuing disclosure.

Neither the State’s independent auditors nor any other independent accountants have compiled, examined, or performed any procedures with respect to the prospective financial information shown above, nor have they expressed any opinion or any other form of assurance on such information or its achievability and assume no responsibility for and disclaim any association with the prospective financial information.



Table V-8

**ACTUAL AND PROJECTED OTHER REGISTRATION-RELATED FEES**

Fiscal Year (June 30)	Counter Service			Other Miscellaneous Vehicle Registration- Related Fees	Total Registration- Related Fees
	Title Transaction Fees	Fees and Personalized License Plates	Subtotal		
2006 <sup>(a)</sup>	\$ 48,026,267	\$ 9,129,613	\$ 57,155,880	\$ 8,494,960	\$ 65,650,840
2007	50,470,381	8,487,460	58,957,841	8,457,789	67,415,630
2008 <sup>(a)</sup>	63,825,116	8,504,542	72,329,658	8,690,501	81,020,159
2009 <sup>(a)</sup>	73,326,881	8,065,590	81,392,471	8,300,302	89,692,773
2010	72,424,499	8,356,113	80,780,612	9,873,154	90,653,766
2011	73,817,627	7,736,294	81,553,921	12,201,959	93,755,880
2012 <sup>(a)</sup>	86,902,864	8,082,787	94,985,651	13,046,048	108,031,699
2013	88,495,799	7,650,431	96,146,230	13,240,815	109,387,045
2014	92,478,346	7,838,553	100,316,899	14,053,506	114,370,405
2015	97,129,227	7,678,806	104,808,033	14,821,529	119,629,562
2016	88,293,700	7,797,400	96,091,100	13,471,000	109,562,100
2017	88,293,700	7,797,400	96,091,100	13,471,000	109,562,100
2018	88,293,700	7,797,400	96,091,100	13,471,000	109,562,100
2019	88,293,700	7,797,400	96,091,100	13,471,000	109,562,100
2020	88,293,700	7,797,400	96,091,100	13,471,000	109,562,100
2021	88,293,700	7,797,400	96,091,100	13,471,000	109,562,100
2022	88,293,700	7,797,400	96,091,100	13,471,000	109,562,100
2023	88,293,700	7,797,400	96,091,100	13,471,000	109,562,100
2024	88,293,700	7,797,400	96,091,100	13,471,000	109,562,100
2025	88,293,700	7,797,400	96,091,100	13,471,000	109,562,100

<sup>(a)</sup> Reflects (i) effective date of October 1, 2005 for additional \$10 increase in title transaction fees and \$12 increase in duplicate title fee, (ii) effective date of January 1, 2008 for additional \$24.50 increase in title transaction fees, and (iii) effective date of July 1, 2011 for no increase in the actual title transaction fee, but a \$9 increase in the portion of the title transaction fee that is now considered to be Program Income.

Source: Wisconsin Department of Transportation.

**PROJECTS**

Security on the Bonds or Notes is not dependent upon projects built with Bond or Note proceeds.

Bond and Note proceeds are used to finance a portion of major highway projects enumerated in the Wisconsin Statutes for construction. A major highway project is defined as a project which has a total cost of more than \$30 million and which involves one or more of the following:

- Constructing a new highway 2.5 miles or more in length
- Reconstructing or reconditioning 2.5 miles or more of an existing highway
- Adding one or more lanes, 5 miles or more to an existing highway
- Improving 10 miles or more of existing multi-lane divided highway to freeway standards
- Total cost of \$75 million, has been approved for construction by the Transportation Projects Commission, but does not address any of the above specific mileage threshold requirements.

All state highway improvement projects, including authorized major highway projects, are scheduled in the Department of Transportation’s six-year highway improvement program. The six-year program, updated on a biennial basis, serves as a basic tool for the Department of Transportation’s long-term improvement plans and construction programs.

Construction of major highway projects uses moneys from the following sources:

- Bond or Note proceeds
- Federal aid
- Moneys in the Transportation Fund which may be appropriated for such purposes

The Transportation Projects Commission approves major construction projects for enumeration. Major highway projects must be enumerated prior to construction. The Department of Transportation is actively working on 15 major highway projects with an estimated cost to complete of at least \$2.513 billion in 2015 dollars. See “**SECURITY; Additional Bonds**”.

Requests for additional information about the major highway projects funded or to be funded with proceeds of transportation revenue obligations may be directed as follows:

*Contact:* Wisconsin Department of Transportation  
 Attn: Office of Policy, Budget, and Finance  
*Phone:* (608) 261-8628  
*Mail:* 4802 Sheboygan Avenue  
 P.O. Box 7910  
 Madison, WI 53707-7910  
*E-mail:* [anna.richter@wisconsin.gov](mailto:anna.richter@wisconsin.gov)  
*Web site:* [doa.wi.gov/capitalfinance](http://doa.wi.gov/capitalfinance)

## VARIABLE RATE OBLIGATIONS

The State has issued, and there currently remains outstanding, transportation revenue commercial paper notes, or Notes.

### General

The State has appointed Goldman, Sachs & Co., J.P. Morgan Securities LLC, and Morgan Stanley & Co. LLC to serve as **Dealers** and U.S. Bank National Association, as successor to Deutsche Bank Trust Company Americas, to serve as **Issuing and Paying Agent** for the Notes. The Depository Trust Company (DTC) serves as **Depository** for the Notes.

The State has obtained a **Liquidity Facility** in the form of a line of credit, which is provided for in the Amended and Restated Credit Agreement, dated as of April 15, 2013 (**Credit Agreement**) between the State and two **Liquidity Facility Providers**—State Street Bank and Trust Company (**State Street**) and California State Teachers’ Retirement System (**CalSTRS**) and which provides a current commitment of \$175 million. Table V-9 summarizes, for each authorized and outstanding series of Notes, the principal amount initially issued, the date of initial issuance, and the principal amount outstanding as of December 15, 2015.

Table V-9

### SUMMARY OF OUTSTANDING TRANSPORTATION REVENUE NOTES (December 15, 2015)

<u>Series Designation</u>	<u>Initial Principal Amount</u>	<u>Outstanding Principal Amount</u>	<u>Date of Initial Issuance</u>
1997 Series A	\$157,763,000	\$ 31,468,000	May 7, 1997
2006 Series A	91,290,000	21,985,000	October 2, 2006
2013 Series A	70,025,000	<u>63,675,000</u>	November 5, 2013
	Total	\$ 117,128,000	

Additional Notes may be issued pursuant to action of the Commission subject to meeting certain conditions, such as an additional bonds test. In addition, the aggregate principal amount of Notes outstanding, plus the interest to accrue on such Notes to maturity, plus the aggregate principal amount of

all outstanding Advances made by the Liquidity Facility Providers, may not exceed the commitment amount of the Liquidity Facility.

### **Description of the Notes**

Each Note will be dated the date it is issued. It will be issued as an interest-bearing obligation in a denomination of \$100,000 or increments of \$1,000 above \$100,000.

The Notes are not callable prior to maturity.

Each Note will mature from 1 to 270 days from its issue date but no Note may be issued with a maturity date later than two (2) business days prior to the expiration date of the Liquidity Facility.

Each Note will bear interest from its date of issuance, at the rate determined at the date of issuance, payable at maturity. Interest is computed on the basis of a year having 365 or 366 days and the actual number of days elapsed. The interest rate on the Notes cannot exceed 12% per annum. Payment of each Note will be made to the Depository and then distributed by the Depository.

### **Liquidity Facility**

In order to provide liquidity for the payment of the principal of and interest on maturing Notes, the State has entered into the Credit Agreement with the Liquidity Facility Providers.

Pursuant to the Credit Agreement, the Liquidity Facility Providers are severally and not jointly obligated, subject to certain conditions, to make **Advances** in amounts equal to their respective percentages of the line of credit from time to time on any business day during the term of the Credit Agreement, only for providing funds to pay the principal of and interest on the Notes on the maturity date thereof to the extent that proceeds of other Notes, or other moneys on deposit in the **Note Fund** held by the Issuing and Paying Agent for the Notes, are not available. The respective percentages are currently 60% for State Street and 40% for CalSTRS. The aggregate principal amount of all Advances made on any date may not exceed the outstanding commitment amount under the Credit Agreement (currently \$175 million), as such amount may be increased or decreased from time to time. The program resolution for the Notes requires that the commitment amount cannot be less than the sum of the outstanding Notes, plus the interest to accrue on such Notes to maturity, plus the aggregate principal amount of all outstanding Advances provided by the Liquidity Facility Providers.

*If the amounts on deposit in the Note Fund are insufficient for payment of principal or interest on the Notes when due, then the Issuing and Paying Agent shall make a draw on the line of credit under the Credit Agreement to provide money for such payment. The obligation of the Liquidity Facility Providers to make pro rata advances when a draw is made is subject to certain conditions and may terminate or be suspended immediately without notice or demand and without payment of Notes outstanding upon the occurrence of certain events.*

The Credit Agreement currently terminates on April 25, 2016. The Credit Agreement provides that the termination date may be extended, if the parties agree. Alternatively, the State is permitted to replace the Credit Agreement with another comparable agreement or agreements with any other liquidity facility provider provided that such substitution meets all required qualifications, including, but not limited to, written evidence from each rating agency which, at the request of the State, is then rating the Notes and which is then also rating the provider (or its guarantor) of the proposed substitute liquidity facility to the effect that the substitution of the Liquidity Facility will not by itself result in a withdrawal, suspension, or reduction of its ratings of the Notes from those which then prevail.

The State has delivered a promissory note (**Promissory Notes**) to each Liquidity Facility Provider, evidencing its obligation to repay all Advances. Each Promissory Note ranks equally with the Notes and is payable solely from Program Income deposited into the Subordinated Debt Service Fund, as provided for in the resolutions authorizing the Notes. Likewise, new Promissory Notes would be issued to the providers of any substituted Liquidity Facility. Any such substituted Liquidity Facility Agreement may have covenants, conditions to borrowing and other provisions different from those referred to above for the existing Liquidity Facility.

The State will notify the Dealers of any change in the Liquidity Facility. The State will also notify the Municipal Securities Rulemaking Board (MSRB) through its Electronic Municipal Market Access (EMMA) system of any change in the Liquidity Facility.

Investors should obtain and review a copy of the Credit Agreement in order to understand all of the terms and provisions of the document. A copy of the Credit Agreement can be obtained from the State at the address included on the first page of this Part V of the 2015 Annual Report.

### **Description of the Liquidity Facility Providers**

The following information concerning State Street and CalSTRS has been provided by respective representatives of State Street and CalSTRS, respectively, and has not been independently confirmed or verified by the State. No representation is made herein as to the accuracy or adequacy of such information or as to the absence of material adverse changes in such information subsequent to the date hereof, or that the information given below or incorporated herein by reference is correct as of any time subsequent to its date. The following information is not intended to serve as a representation, warranty, or contract modification of any kind.

#### *State Street Bank and Trust Company*

State Street Bank and Trust Company is a wholly-owned subsidiary of State Street Corporation (**Corporation**). The Corporation (NYSE: STT) is the world's leading provider of financial services to institutional investors including investment servicing, investment management and investment research and trading. With \$28.2 trillion in assets under custody and administration and \$2.5 trillion in assets under management as of December 31, 2014, the Corporation operates in more than 100 geographic markets worldwide. The consolidated total assets of the State Street as of December 31, 2014 accounted for approximately 98% of the consolidated total assets of the Corporation as of the same date. As of December 31, 2014, the Corporation had consolidated total assets of \$274.12 billion, total deposits (including deposits in non-U.S. offices) of \$209.04 billion, total investment securities of \$112.64 billion, total loans and leases, net of unearned income and allowance for loan losses, of \$18.16 billion and total shareholders' equity of \$21.47 billion.

State Street's *Consolidated Reports of Condition and Income for A Bank With Domestic and Foreign Offices Only -- FFIEC 031 (Call Reports)* through December 31, 2014, have been submitted through the Federal Financial Institutions Examination Council and provided to the Federal Reserve System, the primary U.S. federal banking agency responsible for regulating the Corporation and the Bank. Publicly available portions of those Call Reports, and future Call Reports submitted by the Bank, are available on the Federal Deposit Insurance Corporation's website at [www.fdic.gov](http://www.fdic.gov), which website is not incorporated by reference into this Part V of the 2015 Annual Report. The Call Reports are prepared in conformity with regulatory instructions that do not in all cases follow U.S. generally accepted accounting principles.

Additional financial and other information related to the Corporation and State Street, is set forth in the Corporation's Annual Report on Form 10-K for the year ended December 31, 2014 and additional annual, quarterly and current reports subsequently filed or furnished by the Corporation with the U.S. Securities and Exchange Commission (SEC), can be accessed free of charge on the SEC's web site at [www.sec.gov](http://www.sec.gov), which web site is not incorporated by reference into this Part V of the 2015 Annual Report.

Any statement contained in any document referred to above shall be deemed to be modified or superseded for purposes of Part V of the 2015 Annual Report to the extent that a statement contained herein or in any subsequently submitted, filed, or furnished document that also is referred to above modifies or supersedes such statement. The delivery hereof shall not create any implication that there has been no change in the affairs of State Street or the Corporation since the date hereof, or that information contained or referred to is correct as of any time subsequent to that date.

A copy of any or all of the publicly available documents referred to above, other than exhibits to such documents, may be obtained without charge on written request to Investor Relations, State Street Corporation, One Lincoln Street, Boston, Massachusetts 02111, telephone number 617-786-3000.

The Credit Agreement is an obligation solely of State Street and is not an obligation of, or otherwise guaranteed by, the Corporation or any of its affiliates (other than State Street). Neither State Street nor its affiliates make any representation as to the contents of Part V of the 2015 Annual Report (except as to this section), the suitability of the Notes for any investor, the feasibility or performance of any project, or compliance with any securities or tax laws or regulations.

#### *California State Teachers' Retirement System*

The California State Teachers' Retirement System provides defined retirement, survivor and disability benefits to its members. California public school teachers from preschool through community college and certain other employees of the public school system are required by law to be members of CalSTRS. Contributions to the Teachers' Retirement Fund (Fund) are as follows: 2% at 60 members 9.20%, 2% at 62 members 8.56%, school districts and other agencies employing members of CalSTRS 10.73%, and State of California 4.891% of the members' creditable earnings from the fiscal year ending in the prior calendar year.

CalSTRS is a component unit of the State of California, organized and operating under the laws of the State of California, including the Teachers' Retirement Law, constituting Part 13 of Division 1 of Title 1 of the Education Code of the State of California, commencing at Section 22000 (Law), as amended. The Law establishes the Teachers' Retirement Board, which has the sole and exclusive fiduciary responsibility over the administration and investment of funds held in the Fund, in which the bulk of the CalSTRS assets are held.

Financial data is taken from the audited CalSTRS financial statements for fiscal year ended June 30, 2015. Financial data for fiscal years ended after 2015 are incorporated by reference in this section and shall be deemed to be a part hereof.

As of June 30, 2015, the Fund had net assets held in trust for pension benefits with a market value of approximately \$191.8 billion, compared to approximately \$190.5 billion as of June 30, 2014. As of November 30, 2015, total investment assets had a market value of approximately \$188.4 billion (unaudited).

The CalSTRS Credit Enhancement Program (**CEP**) is rated AA+/F1+ by Fitch Ratings. CalSTRS, the sponsor of the CEP, is rated Aa2/P-1 and AA-/A-1+ by Moody's Investors Service and Standard and Poor's, respectively.

CalSTRS will provide, without charge and upon request, a copy of its financial statements. Requests to CalSTRS for the financial statements should be directed by mail to California State Teachers' Retirement System, P.O. Box 163749, MS-04, Sacramento, California 95816-3749, Attention: Credit Enhancement Program, or by email to [cepinquiries@calstrs.com](mailto:cepinquiries@calstrs.com). The most recent financial statements, CAFR and other information regarding CalSTRS can be viewed at [www.calstrs.com/actuarial-financial-and-investor-information](http://www.calstrs.com/actuarial-financial-and-investor-information). CalSTRS investments and the CEP information can be viewed at [www.calstrs.com/investments](http://www.calstrs.com/investments). The previously mentioned websites are not incorporated by reference into this Part V of the 2015 Annual Report.

The foregoing information has been provided by CalSTRS and is not intended to serve as a representation, warranty, or contract modification of any kind.

### **SUMMARY OF CERTAIN PROVISIONS OF THE GENERAL RESOLUTION**

The General Resolution contains various covenants and security provisions, certain of which are summarized below. In general, this Section does not summarize any provisions of the Series Resolutions. Reference should be made to the General Resolution for a full and complete statement of its provisions. A copy of the General Resolution or any Series Resolution may be obtained by contacting the State at the address provided in the [introduction to this Part V of the 2015 Annual Report](#).

### **Resolution to Constitute Contract**

The provisions of the General Resolution shall be a part of the contract of the State with the holders of Bonds and shall be deemed to be and shall constitute a contract among the State, the Trustee and the holders from time to time of the Bonds and shall be for the equal benefit, protection and security of the holders of any and all of such Bonds.

### **Provisions for Issuance of Bonds**

The General Resolution authorizes Bonds of a Series to be issued from time to time in accordance with the terms of the General Resolution without limitation as to amount except as provided by law. Bonds shall be issued pursuant to authorization by a Series Resolution containing the provisions specified by the General Resolution. Following issuance of the initial Series of Bonds, the Commission must determine that the additional obligations test set forth in the General Resolution is met prior to adopting any Series Resolution for other than refunding purposes. The Bonds of a Series may be authenticated and delivered only upon receipt by the Trustee of, among other things:

- A Bond Counsel's opinion to the effect, among other things, that the Bonds of such Series have been duly and validly authorized and issued in accordance with the Wisconsin Constitution and the Wisconsin Statutes and in accordance with the General Resolution; and,
- The proceeds of the Bonds of such Series to be deposited with the Trustee pursuant to the General Resolution.

### **Additional Bonds**

Following the initial issuance of Bonds, the State will not create or permit the creation of, or issue any obligations or create any indebtedness which shall be secured by a superior or equal charge and lien on the Program Income, except that additional Series of Bonds may be issued from time to time subsequent to the issuance of the initial Series of Bonds on a parity with the Bonds of such initial Series of Bonds and secured by an equal charge and lien on the Program Income. However, no additional Series of Bonds shall be issued subsequent to the initial Series of Bonds unless:

- The principal amount of the additional Bonds together with the principal amount of the Outstanding Bonds will not exceed in aggregate principal amount any limitation thereon imposed by law;
- Except in the case of refunding Bonds, there shall be filed with the Trustee a Certificate of an Authorized Officer of the Commission and the Department of Transportation stating that Program Income, including interest earnings on amounts deposited in the Funds or Accounts held by the Trustee and available for debt service, for any twelve (12) consecutive calendar months of the preceding eighteen (18) calendar months, was equal to at least 2.25 times the maximum aggregate Principal Requirement and Interest Requirement for any Fiscal Year for all Outstanding Bonds (the General Resolution defines Outstanding Bonds to include the Bonds being issued upon the delivery of such Certificate);
- Upon the issuance and delivery of the additional Bonds, the amount credited to the Reserve Fund shall be at least equal to the Debt Service Reserve Requirement immediately after issuance; and
- All requirements with respect to adoption of Series Resolutions have been complied with.

### **Refunding Bonds**

The State may issue refunding Bonds of one or more Series to refund any Outstanding Bonds of one or more Series whether by payment at maturity or by redemption. Refunding Bonds shall be issued pursuant to and in accordance with the provisions of a Series Resolution authorizing such refunding Bonds.

### **Application of Bond Proceeds**

The proceeds of sale of a Series of Bonds shall be deposited as follows:

- To the Principal and Interest Account of the Redemption Fund, the amount of any accrued interest on the Series of Bonds to their date of delivery;

- To the Principal and Interest Account of the Redemption Fund, the amount of any premium determined by the applicable Series Resolution, or specified in a certificate of an authorized officer of the Commission;
- To the Principal and Interest Account of the Redemption Fund, the proceeds of any Series of refunding Bonds to the extent provided in the applicable Series Resolution;
- To the Reserve Fund, the amount specified in the Series Resolution as necessary to establish or increase the amount set aside therein to the Debt Service Reserve Requirement;
- To any other Fund or Account to the extent permitted by the Revenue Obligations Act provided for by Series Resolution; and
- To the Program Capital Fund, the balance of the proceeds of any Series of Bonds, which shall be allocated:
  - (a) to the Capitalized Interest Account, the amount of capitalized interest, if any, determined by the applicable Series Resolution to be deposited; and
  - (b) to the Program Account, the balance of the proceeds of any Series of Bonds.

**Establishment of Funds**

All Program Income and other moneys or securities held by the Trustee pursuant to the General Resolution are revenues of the Trustee and are revenues outside of the State Treasury which shall be held in trust and applied only in accordance with the provisions of the General Resolution. The General Resolution establishes and creates the following trust funds that are to be held by the Trustee:

- Program Capital Fund, which consists of a Capitalized Interest Account and a Program Account;
- Redemption Fund, which consists of a Principal and Interest Account and a Program Income Account;
- Reserve Fund; and
- Program Expense Fund.

The General Resolution authorizes the creation of other Funds and Accounts for a particular Series of Bonds by the applicable Series Resolution.

**Capitalized Interest Account**

Amounts in the Capitalized Interest Account, if any, shall be transferred to the Principal and Interest Account of the Redemption Fund to be used for payment of capitalized interest on the Bonds in accordance with the schedule set forth in a Series Resolution or in a Certificate of an Authorized Officer of the Building Commission delivered to the Trustee. Amounts in the Capitalized Interest Account shall also be transferred to the Principal and Interest Account of the Redemption Fund for redemption of Bonds (1) upon receipt by the Trustee of a Certificate of an Authorized Officer of the Building Commission stating that such redemption is necessary for compliance with the covenants contained in the General Resolution concerning tax exemption of the interest on certain of the Bonds, and (2) in accordance with the provisions of the terms of a Series Resolution with respect to the Series of Bonds authorized by such Series Resolution.

**Program Account**

Amounts in the Program Account shall be used solely for the following purposes:

- Paying the Costs of Issuance;
- Financing Projects in accordance with the Act and the General Resolution; and
- Transfers to the Principal and Interest Account of the Redemption Fund to pay interest on the principal of or Redemption Price of Outstanding Bonds (a) upon receipt by the Trustee of a Certificate of an Authorized Officer of the Building Commission stating that such redemption is necessary for compliance with the covenants contained in the General Resolution concerning tax exemption of the interest on certain of the Bonds, (b) in accordance with the provisions of the

terms of a Series Resolution, and (c) upon receipt by the Trustee of a Certificate of an Authorized Officer of the Building Commission stating that there are no further Projects to be funded from the Program Account.

### **Redemption Fund**

There shall be deposited into the Principal and Interest Account of the Redemption Fund from the proceeds of the sale of the Bonds, immediately upon receipt thereof, an amount equal to the accrued interest and any premium (if so specified in a certificate of an authorized officer of the Commission) paid upon the sale of the Bonds and the proceeds of any Series of refunding Bonds. All Program Income shall be deposited promptly with the Trustee (or with national banking associations, state banks or trust companies acting as agents of the Trustee for transfer daily to the Trustee) and such amounts shall be deposited in the Program Income Account of the Redemption Fund. There shall also be deposited in the Program Income Account of the Redemption Fund any other amounts required or permitted to be deposited therein pursuant to the General Resolution.

The amounts deposited in the Principal and Interest Account of the Redemption Fund from the proceeds of a Series of Bonds representing accrued interest and any specified premium shall be set aside and applied to the payment of interest on the next succeeding Interest Payment Date and any additional Interest Payment Dates specified in the Series Resolution or a Certificate of an Authorized Officer of the Building Commission.

The amounts deposited in the Principal and Interest Account of the Redemption Fund from the proceeds of a Series of refunding Bonds shall be applied to the payment or redemption of Bonds as provided in the Series Resolution.

Commencing on the date of issuance of the Bonds and continuing each succeeding business day until the amounts required in (1) through (5) of this paragraph are deposited and thereafter on each Redemption Fund Deposit Day (the 1<sup>st</sup> day of January, April, July, and October), and continuing each succeeding business day until the amounts required in (1) through (5) of this paragraph are deposited, the Trustee shall immediately transfer aside from the amounts deposited in the Program Income Account, in the following order of priority:

- (1) To the Principal and Interest Account, after giving effect to:
  - (a) amounts to be available from accrued interest and in the Capitalized Interest Account, and
  - (b) any balance in the Principal and Interest Account on each Redemption Fund Deposit Day, and
  - (c) amounts transferred from the Reserve Fund, and
  - (d) amounts transferred from the Program Expense Fund, an amount equal to the Interest Requirement with respect to Outstanding Bonds;
- (2) To the Principal and Interest Account, after giving effect to any balance in the Principal and Interest Account in excess of the Interest Requirement an amount equal to the Principal Requirement on the Outstanding Bond;
- (3) To the Reserve Fund, an amount equal to any deficiency in the Reserve Fund;
- (4) To the Program Expense Fund created in the General Resolution, an amount equal to any unfunded portion of the Program Expenses payable over the next three months according to the General Resolution; and
- (5) To the Subordinated Debt Service Fund created for the Notes, an amount equal to the Subordinated Debt Service Fund Requirement.

Immediately upon meeting the requirements set forth above, amounts in the Program Income Account of the Redemption Fund, including any interest earned thereon, in excess of the amounts required to be set aside above, shall be paid by the Trustee to the State Treasury for deposit into the Transportation Fund free and clear of the lien of the General Resolution in accordance with the Revenue Obligations Act and the Act.



To the extent not otherwise provided for in the Series Resolution applicable to any Series of Bonds, on the first day of each Fiscal Year and prior to any of the transfers by the Trustee that day specified above, all amounts in the Principal and Interest Account shall be paid by the Trustee to the State Treasury for deposit into the Transportation Fund free and clear of the lien of the General Resolution in accordance with the Revenue Obligations Act and the Act.

### **Payment of Bonds**

The Trustee is required to pay to the Registrar and Paying Agent for the Bonds on or before each Interest Payment Date, (1) the amount equal to interest due on the Outstanding Bonds on such date, (2) the amount equal to the principal amount of Outstanding Bonds maturing on such date and (3) the amount equal to the Redemption Price of any Outstanding Bonds to be redeemed on such date, and in each such case, such amounts shall be applied by such Registrar and Paying Agent to such payments.

There shall be deposited in the Principal and Interest Account of the Redemption Fund any amounts which are required to be deposited therein pursuant to the General Resolution, a Series Resolution and any other amounts available therefor and determined by the State to be deposited therein for the purpose of redeeming Bonds. Subject to the provisions of the respective Series of Bonds and to the provisions of the respective resolutions authorizing the issuance thereof and authorizing the issuance of refunding Bonds, all amounts deposited in the Principal and Interest Account of the Redemption Fund in accordance with the provisions described in this paragraph shall be set aside and applied to the payment, purchase or redemption of Bonds.

### **Purchase of Bonds**

Except as may be otherwise provided in connection with the issuance of refunding Bonds, at any time prior to the 45<sup>th</sup> day upon which Bonds are to be paid or redeemed from the amounts described in the preceding paragraph, the Trustee may upon receipt of written instructions signed by an Authorized Officer of the Building Commission apply such amounts to the purchase of any of the Bonds which may be paid or redeemed by application of amounts on deposit in the Principal and Interest Account of the Redemption Fund. The Trustee shall purchase Bonds at such times, for such prices, in such amounts and in such manner as the Building Commission shall direct. The purchase price paid by the Trustee (excluding accrued interest but including any brokerage and other charges) for any Bond purchased shall not exceed the principal amount of such Bond or the Redemption Price of such Bond on the next Redemption Date for such Bonds.

### **Program Expense Fund**

On the 1<sup>st</sup> day of January, April, July, and October, the Trustee shall immediately transfer amounts on deposit in the Program Income Account to the Program Expense Fund for the purpose of paying Program Expenses for the succeeding three months as set forth in the annual budget prepared by the Department of Transportation, but only upon a Certificate of an Authorized Officer of the Department of Transportation, stating that the amounts are required and have been or will be expended for purposes for and to which the Program Expense Fund may be used and applied.

### **Reserve Fund**

If on any Interest Payment Date, Principal Installment Date, or Redemption Date for the Bonds, the amount in the Principal and Interest Account of the Redemption Fund shall be less than the amount required for the payment of interest, principal or Redemption Price on Outstanding Bonds on such date, the Trustee shall apply assets in the Reserve Fund to the extent necessary to make good the deficiency.

In the event there is a deficiency in the Reserve Fund, it shall be made up from the Redemption Fund after both the Interest Requirement and the Principal Requirement with respect to Outstanding Bonds have been met. Monies flow to the Redemption Fund commencing on the date of issuance of a Series of Bonds or on a Redemption Fund Deposit Day, whichever is earlier.

On the first day of each Fiscal Year, income and earnings from Investment Obligations in the Reserve Fund shall be transferred to the Principal and Interest Account to the extent such transfer will not reduce the amount in the Reserve Fund below an amount equal to the Debt Service Reserve Requirement.

### **Investments and Deposits**

Subject to instructions from time to time received from an Authorized Officer of the Building Commission and to the provisions of the General Resolution, moneys in any Fund or Account shall be continuously invested and reinvested or deposited and redeposited by the Trustee in the highest yield Investment Obligations that may be reasonably known to the Trustee to the extent the same are authorized by the applicable Series Resolution and at the time legal for investment of funds under the Act, the Revenue Obligations Act and other applicable law. Investments shall be made with a view toward maximizing yield (with proper preservation of principal) and minimizing the instances of uninvested funds.

Investment Obligations purchased as an investment of moneys in any Fund or Account held by the Trustee under the provisions of the General Resolution shall be deemed at all times to be part of such Fund or Account but the income or interest earned and gains realized from Investment Obligations held by the Reserve Fund and Program Expense Fund in excess of the requirements of said Funds shall be transferred to the Principal and Interest Account on the first day of each Fiscal Year.

The Trustee shall sell at the best price obtainable, or present for redemption or exchange, any Investment Obligations purchased by it pursuant to the General Resolution whenever it shall be necessary in order to provide moneys to meet any payments or transfers from the Fund or Account for which such investment was made.

In computing the amount in the Reserve Fund, obligations purchased as an investment of moneys therein shall be valued at par if purchased at par value or at amortized value if purchased at other than par value. Valuation shall be made on the 20<sup>th</sup> day of each March, June, September and December and as otherwise required under the General Resolution and on any particular date shall not include the amount of interest then earned or accrued to such date on any deposit or investment.

The Trustee shall invest and reinvest the moneys in any Fund or Account in available Investment Obligations so that the maturity date or date of redemption at the option of the holder thereof shall coincide as nearly as practicable with the times at which monies are needed to be so expended.

Investment Obligations means any of the investments described under “**GLOSSARY**”.

### **Powers as to Bonds and Pledge**

The State covenants that it is duly authorized pursuant to law to authorize and issue the Bonds and to adopt the General Resolution and to pledge the Program Income purported to be pledged by the General Resolution in the manner and to the extent provided in the General Resolution.

### **Payment Covenant**

The State covenants that it will duly and punctually pay or cause to be paid, but solely from sources as provided in the General Resolution, the principal and Redemption Price of every Bond and the interest thereon, on the dates and at the places and in the manner stated in the Bonds according to the true intent and meaning thereof.

### **Tax Covenants**

The State and the Trustee shall at all times do and perform all acts and things necessary or desirable in order to assure that interest paid on the Bonds shall, for the purposes of federal income taxation, be excludable from the gross income of the recipients thereof and exempt from such taxation.

The State and the Trustee shall not permit at any time or times any of the proceeds of the Bonds or any other funds of the State to be used directly or indirectly to acquire any securities or obligations, the acquisition of which would cause any Bond to be an “arbitrage bond” as defined in Section 148 of Code.

The State and the Trustee shall not permit at any time or times any proceeds of any Bonds or any other funds of the State to be used, directly or indirectly, in a manner which would result in the exclusion of any Bond from the treatment afforded by Section 103 of the Code, as from time to time amended, by reason of the classification of such Bond as a “private activity bond” within the meaning of Section 141 of the Code.

The State reserves the right to elect to issue Bonds, the interest on which is not exempt from federal income taxation, if such election is made prior to the issuance of such Bonds, and the covenants as to tax exemption shall not apply to such Bonds.

### **Funds and Reports**

The Department of Transportation covenants that it will keep, or cause to be kept and maintained proper books of account relating to the Program and within 120 days after the end of each Fiscal Year shall cause such books of account to be audited by an Accountant. A copy of each audit report, annual balance sheet and income and expense statement showing in reasonable detail the financial condition of the Program (including a schedule of monthly Program Income) as of the close of each Fiscal Year, and summarizing in reasonable detail the income and expenses for such year, including the transaction relating to the Funds, shall be filed promptly with the Trustee and shall be available for inspection by any Bondholder. See “**AUDITED FINANCIAL STATEMENTS**” in **APPENDIX A**.

### **Budgets**

The Department of Transportation must file an annual budget broken down on a quarterly basis covering the fiscal operations of the Program for the succeeding Fiscal Year not later than the first day of each Fiscal Year with the Trustee. The annual budget shall at least set forth for such Fiscal Year the estimated Program Income, the debt service due and payable or estimated to become due and payable during such Fiscal Year and estimated Program Expenses. The Department of Transportation may at any time file with the Trustee an amended annual budget for the remainder of the then current Fiscal Year in the manner provided for the filing of the annual budget. Copies of the annual budget as then amended and in effect shall be made available by the Trustee during normal business hours in the Trustee’s office for inspection by any Bondholder.

### **The Program**

The State covenants from time to time, with all practical dispatch and in a sound and economical manner consistent in all respects with the Act, the Revenue Obligations Act, the provisions of the General Resolution and sound banking practices and principles to:

- Use and apply the proceeds of the Bonds, to the extent not reasonably or otherwise required for other purposes of the Program, to finance Projects, pursuant to the Act, the Revenue Obligations Act and the General Resolution;
- Do all such acts and things as shall be necessary to charge and cause to be deposited with the Trustee Program Income sufficient to pay interest and principal and redemption premium on all Outstanding Bonds, to maintain the Debt Service Reserve Requirement in the Reserve Fund, to maintain any Credit Support and Liquidity Fund Requirement provided for in a Series Resolution, to pay Program Expenses; and
- Maintain any Subordinated Debt Service Fund Requirement provided for in a Series Resolution.

### **Power of Amendment**

The Building Commission may, from time to time and without the consent and concurrence of any holder of any Bond, adopt a Supplemental Resolution modifying or amending the General Resolution if the modification or amendment does not adversely affect the holders of the Outstanding Bonds.

Any modification of or amendment to the General Resolution which does affect the rights and obligations of the State and of the holders of the Bonds, in any particular, may be made by a Supplemental Resolution with the written consent given as provided in the General Resolution, (1) of the holders of at least two-

thirds in principal amount of the Outstanding Bonds at the time such consent is given, (2) in case less than all of the several Series of Bonds then Outstanding are affected by the modification or amendment, of the holders of at least two-thirds in principal amount of the Bonds of each Series so affected and Outstanding at the time such consent is given, and (3) in case the modification or amendment changes the terms of any Sinking Fund Installment, of the holders of at least two-thirds in principal amount of the Bonds of the particular Series and maturity entitled to such Sinking Fund Installment and Outstanding at the time such consent is given. If any such modification or amendment will not take effect so long as any Bonds of any specified maturity remain Outstanding, however, the consent of the holders of such Bonds shall not be required and such Bonds shall not be deemed to be Outstanding for the purpose of any calculation of Outstanding Bonds under the General Resolution or Series Resolution. No such modification or amendment shall permit a change in the terms of redemption or maturity of the principal of any Outstanding Bond or of any installment of interest thereon or a reduction in the principal amount or the Redemption Price thereof or in the rate of interest without the consent of the holder of such Bond, or shall reduce the percentages or otherwise affect the classes of Bonds, the consent of the holders of which is required to effect any such modification or amendment.

### **Events of Default**

It is an Event of Default if:

- (1) Payment of any installment of interest on the Outstanding Bonds shall not be made after the same shall become due;
- (2) Payment of the principal of, Redemption Price or any Sinking Fund Installment on any Bond when and as the same shall become due and payable, whether at maturity or upon call for redemption or otherwise, shall not be made when and as the same shall become due; or
- (3) The State shall fail or refuse to comply with the provisions of the General Resolution including replenishment of the Reserve Fund, or shall default in the performance or observance of any of the covenants, agreements or conditions on its part contained in the General Resolution or in any Supplemental or Series Resolution or the Bonds, and such failure, refusal or default shall continue for a period of thirty (30) days after written notice thereof by the Trustee or the holders of not less than 25% in principal amount of the Outstanding Bonds.

### **Remedies**

Upon the happening and continuance of any Event of Default specified in clauses (1) and (2) under Events of Default above, the Trustee shall proceed, or upon the happening and continuance of any Event of Default specified in clause (3) under Events of Default above, the Trustee may proceed and, upon the written request of the holders of not less than 25% in principal amount of the Outstanding Bonds, shall proceed, in its own name, subject to the General Resolution, to protect and enforce the rights of the Bondholders by such of the following remedies as the Trustee, being advised by counsel shall deem most effectual to protect and enforce such rights: (a) by mandamus or other suit, action, or proceeding at law or in equity, to enforce all rights of the Bondholders, including the right to require the State to charge and cause to be deposited with the Trustee sufficient Program Income and to require the State to carry out the covenants and agreements with Bondholders and to perform its duties under the Act, the Revenue Obligations Act and the General Resolution; (b) by bringing suit upon the Bonds; (c) by action or suit in equity, to require the State to account as if it were the trustee of an express trust for the holders of the Bonds; (d) by action or suit in equity, to enjoin any acts or things which may be unlawful or in violation of the rights of the holders of the Bonds; (e) by declaring all Bonds due and payable, and if all defaults shall be cured, then, with written consent of the holders of not less than 25% in principal amount of the Outstanding Bonds, by annulling such declaration and its consequences; or (f) in the event that all Bonds are declared due and payable, by selling Investment Obligations.

Before declaring the principal of Bonds due and payable upon an Event of Default, the Trustee shall first give thirty (30) days' notice in writing to the Governor and Attorney General of the State.

### **Priority of Bonds After Default**

In the event that upon the happening and continuance of an Event of Default, the Funds or Accounts held by the Trustee, Registrar and Paying Agent are insufficient for the payment of interest, principal or Redemption Price then due on the Bonds, such Funds or Accounts (other than portions of Funds held for the payment or redemption of particular Bonds which have theretofore become due at maturity or by call for redemption) and any other monies received or collected by the Trustee acting pursuant to the Act, the Revenue Obligations Act and the General Resolution, after making provisions for the payment of any expenses necessary in the opinion of the Trustee to protect the interests of the holders of the Bonds and for the payment of the charges and expenses and liabilities incurred and advances made by the Trustee or the Registrar and Paying Agent in the performance of their respective duties under the General Resolution, are to be applied as follows:

- (1) If the principal of all of the Bonds has not become or been declared due and payable:

*First:* To the payment to the persons entitled thereto of all installments of interest then due in the order or maturity of such installments, and, if the amount available is not sufficient to pay in full any installment, then to the payment thereof ratably, according to the amounts due on such installment, to the persons entitled thereto, without any discrimination or preference.

*Second:* To the payment to the persons entitled thereto of the unpaid principal or Redemption Price of any Bonds which shall have become due, whether at maturity or by call for redemption, in the order of their due dates, and, if the amounts available shall not be sufficient to pay in full all the Bonds due on any date, then to the payment thereof ratably, according to the amounts of principal or Redemption Price due on such date, to the persons entitled thereto, without any discrimination or preference.

- (2) If the principal of all of the Bonds has become or been declared due and payable, to the payment of the principal and interest then due and unpaid upon the Bonds without preference or priority of principal over interest or of interest over principal, or of any installment of interest over any other installment of interest, or of any Bond over any other Bond, ratably, according to the amounts due respectively for principal and interest, to the persons entitled thereto without any discrimination or preference except as to any difference in the respective rates of interest specified in the Bonds.

### **Limitation on Rights of Bondholders**

No individual Bondholder shall have any right to initiate legal proceedings to enforce rights under the General Resolution unless such holder shall have given to the Trustee written notice of the Event of Default or breach of duty on account of which such proceeding is to be taken, and unless the holders of not less than 25% in principal amount of the Outstanding Bonds have made written request of the Trustee after the right to exercise such right of action has occurred, and shall have afforded the Trustee a reasonable opportunity either to exercise the powers granted to it under the General Resolution or to institute such proceedings in its name and unless, also, there has been offered to the Trustee reasonable security and indemnity against costs, expenses and liabilities and the Trustee has refused or neglected to comply with such request within a reasonable time. No provision in the General Resolution on defaults and remedies affects or impairs the right of any Bondholder to enforce the payment of the principal of and interest on his Bonds, or the obligation of the State to pay the same from the source, at the time and place specified in said Bond.

### **Compensation of Fiduciaries**

Each Fiduciary is entitled to such fees and reimbursement as shall be established in an agreement between the Commission and such Fiduciary by the Trustee from the Program Expense Fund (except that the agreement for Registrar shall be between the Secretary of Administration and the Registrar). Each Fiduciary shall have a lien for such fees and reimbursement on any and all Funds at any time held by it under the General Resolution.

## **Removal of Trustee**

The Trustee is required to be removed if so requested by the holders of a majority in principal amount of the Outstanding Bonds excluding any Bonds held by or for the account of the State. The State may remove the Trustee at any time, except during the existence of an Event of Default, for such cause as the State may determine in its sole discretion. In either such event, a successor is required to be appointed.

## **Defeasance**

If the State shall pay or cause to be paid to the holders of the Bonds, the principal and interest and Redemption Price to become due thereon, at the times and in the manner stipulated therein and in the General Resolution, then the pledge of Program Income and other monies, securities and funds thereby pledged and all other rights granted thereby shall be discharged and satisfied.

Bonds or interest installments for the payment or redemption of which monies have been set aside and shall be held in trust by Fiduciaries (through deposit by the State of funds for such payment or redemption or otherwise) shall, at the maturity or Redemption Date thereof, be deemed to have been paid within the meaning and with the effect expressed in the above paragraph. Any Bonds shall, prior to maturity or Redemption Date thereof, be deemed to have been paid within the meaning and with the effect so expressed if:

- In case any of the Bonds to be redeemed on any date prior to their maturity, the State has given to the Trustee in form satisfactory to it, irrevocable instructions to publish, as provided in the General Resolution, notice of redemption on said date of such Bonds;
- There has been deposited with the Trustee either monies in an amount which are sufficient, or Investment Obligations which are direct obligations of or obligations guaranteed by the United States of America or other obligations, the payment of which is provided for by an irrevocable escrow deposit invested in direct obligations of the United States of America, the principal of and the interest on which when due will provide monies which, together with the monies, if any, deposited with the Trustee at the same time, will be sufficient to pay when due the principal or Redemption Price and interest due and to become due on said Bonds on and prior to the Redemption Date or maturity date thereof, as the case may be; or
- In the event said Bonds are not by their terms subject to redemption within the next succeeding 60 days, the State has given the Trustee, in form satisfactory to it, irrevocable instructions to publish, as soon as practicable, at least once in an Authorized Newspaper a notice to the holders of such Bonds that the deposit required above has been made with the Trustee and that said Bonds are deemed to have been paid and stating such maturity or Redemption Date upon which monies are to be available for the payment of the principal of and Redemption Price on said Bonds.

Neither the Investment Obligations nor the monies so deposited with the Trustee nor principal or interest payments on any such Investment Obligations shall be withdrawn or used for any purpose other than (and shall be held in trust for) the payment of the principal of, Redemption Price and interest on said Bonds, but any cash received from such principal or interest payments on such Investment Obligations deposited with the Trustee, if not then needed for such purpose may, to the extent practicable and legally permitted, be reinvested in Investment Obligations maturing at times and in amounts sufficient to pay when due the principal of, Redemption Price and interest to become due on said Bonds on and prior to such Redemption Date or maturity date thereof, as the case may be, and interest earned from such reinvestments may be paid over to the State, as received by the Trustee, free and clear of any trust, lien or pledge.

## **GLOSSARY**

This Glossary includes definitions from the General Resolution and the Series Resolutions that apply to capitalized terms used in Part V of the 2015 Annual Report.

**Accountant** means such reputable and experienced independent certified public accountant or firm of independent certified public accountants of nationally recognized standing as may be selected by the Department of Transportation and be satisfactory to the Trustee which may be the accountant or firm of accountants who regularly audit the books and accounts of the Department.

**Act** means Section 84.59, Wisconsin Statutes.

**Authorized Newspaper** means either The Wall Street Journal or The Bond Buyer, or such other financial newspaper or financial journal of general circulation, printed in the English language and customarily published (except in the case of legal holidays) at least once a day for at least five days in each calendar week, in the Borough of Manhattan, City and State of New York.

**Authorized Officer** when used with reference to the Department of Transportation means the Secretary or other person designated from time to time by the Secretary, and when used with reference to the Commission, means the Chairperson of the Commission or other person designated from time to time by the Chairperson of the Commission and, in the case of any act to be performed or duty to be discharged, any other member, staff, officer or employee of the foregoing Department of Transportation or Commission then authorized to perform such act or discharge such duty.

**Bond** or **Bonds** means any bond or any other evidence of revenue obligation authorized under the General Resolution and issued pursuant to a Series Resolution.

**Bond Counsel's Opinion** means an opinion executed by the Attorney General of Wisconsin or an attorney or firm of attorneys of nationally recognized standing in the field of law relating to municipal, state and public agency financing, selected by the State.

**Bondholder** and the term **Holder** or **holder** means the registered owner of any Outstanding Bond or Bonds, if registered to a particular person or persons, or the holder of any Outstanding Bond or Bonds in bearer form or registered as to principal only, or his duly authorized attorney in fact, representative or assigns.

**1998 Series A Bonds** means the State of Wisconsin Transportation Revenue Bonds, 1998 Series A, issued on August 15, 1998.

**2005 Series A Bonds** means the State of Wisconsin Transportation Revenue Bonds, 2005 Series A, issued on March 10, 2005.

**2007 Series 1 Bonds** means the State of Wisconsin Transportation Revenue Refunding Bonds, 2007 Series 1, issued on March 8, 2007.

**2008 Bonds** means the State of Wisconsin Transportation Revenue Bonds, 2008 Series A, issued on August 27, 2008.

**2009 Series B Bonds** means the State of Wisconsin Transportation Revenue Bonds, 2009 Series B (Taxable), issued on October 1, 2009.

**2010 Series A Bonds** means the State of Wisconsin Transportation Revenue Bonds, 2010 Series A, issued on December 9, 2010.

**2010 Series B Bonds** means the State of Wisconsin Transportation Revenue Bonds, 2010 Series B (Taxable), issued on December 9, 2010.

**2012 Series 1 Bonds** means the State of Wisconsin Transportation Revenue Bonds, 2012 Series 1, issued on April 25, 2012.

**2012 Series 2 Bonds** means the State of Wisconsin Transportation Revenue Bonds, 2012 Series 2, issued on June 28, 2012.

**2013 Bonds** means the State of Wisconsin Transportation Revenue Bonds, 2013 Series 1, issued on March 6, 2013.

**2014 Series 1 Bonds** means the State of Wisconsin Transportation Revenue Bonds, 2014 Series 1, issued on April 23, 2014.

**2014 Series 2 Bonds** means the State of Wisconsin Transportation Revenue Refunding Bonds, 2014 Series 2, issued on December 10, 2014.

**2015 Series 1 Bonds** means the State of Wisconsin Transportation Revenue Refunding Bonds, 2015 Series 1, issued on April 30, 2015.

**2015 Series A Bonds** mean the State of Wisconsin Transportation Revenue Bonds, 2015 Series A, issued on December 10, 2015.

**Capitalized Interest Account** shall mean the account established by Section 402 of the General Resolution.

**Certificate** means (i) a signed document either attesting to or acknowledging the circumstances, representations or other matters therein stated or set forth or setting forth matters to be determined pursuant to the General Resolution, or (ii) the report of an Accountant as to audit or other procedures called for by the General Resolution.

**Commercial Paper Notes** or **Notes** means, in aggregate, the State of Wisconsin Transportation Revenue Commercial Paper Notes of 1997, Series A, the State of Wisconsin Transportation Revenue Commercial Paper Notes of 2006, Series A, and the State of Wisconsin Transportation Revenue Commercial Paper Notes of 2013, Series A.

**Commission** means the State of Wisconsin Building Commission established and existing pursuant to Section 13.48, Wisconsin Statutes, and any successor thereto to whom the powers and duties granted to or imposed by the General Resolution shall be given by law.

**Costs of Issuance** means all items of expense, directly or indirectly payable or reimbursable by or to the State which are related to the authorization, sale, credit support, liquidity or issuance of Bonds.

**Credit Support and Liquidity Fund Requirement** means as of any date of calculation, an amount equal to the aggregate Credit Support and Liquidity Fund Requirements for each Series of Outstanding Bonds as specified with respect to each such Series in the applicable Series Resolution.

**Debt Service Requirement** means as of any particular date of calculation, the aggregate Interest Requirement and Principal Requirement for Outstanding Bonds as specified in each Series Resolution authorizing the issuance of a Series of Bonds.

**Debt Service Reserve Requirement** means, as of any particular date of computation, an amount equal to the aggregate of the amounts specified in each Series Resolution authorizing the issuance of a Series of Bonds (any of which are Outstanding on the date of computation) as the amount to be the Debt Service Reserve Requirement, provided that, with respect to any Series of Bonds, in lieu of a deposit to the Reserve Fund of an amount equal to the applicable Series Debt Service Reserve Requirement, the State may provide for a letter of credit, municipal bond insurance policy, surety bond or other type of agreement or arrangement with an entity having, at the time of entering into such agreement or arrangement, a credit rating equal to or greater than the Bonds which provides for the availability, at the times required pursuant to the provisions of any Series Resolution, of an amount at least equal to such Series Debt Service Reserve Requirement and such method of funding shall be deemed to satisfy all provisions of the Series Resolution with respect to the Debt Service Reserve Requirement and the amount required to be on deposit in the Reserve Fund with respect to such Series of Bonds.

**Department of Transportation** or **Department** or **DOT** means the State of Wisconsin Department of Transportation established and existing pursuant to Section 15.46, Wisconsin Statutes, and any successor thereto to which the powers and duties granted to or imposed by the General Resolution shall be given by law.



**Fiduciary** means the Trustee, the Registrar and any Paying Agent, or any or all of them as may be appropriate.

**Fiscal Year** means the fiscal year of the State as established from time to time.

**Fund** means one or more, as the case may be, of the funds or accounts created and established pursuant to the General Resolution.

**General Resolution** means the General Resolution as the same may from time to time be amended, modified or supplemented by a Supplemental Resolution.

**Interest Payment Dates** means any date on which is due the payment of interest on any Series of Bonds as specified in each Series Resolution authorizing the issuance of the Series of Bonds.

**Interest Requirement** means as of any particular date of calculation, the amount equal to any unpaid interest then due, plus an amount to the interest accruing or payable during the period between the date of calculation and the next Redemption Fund Deposit Day with respect to each Series of Outstanding Bonds.

**Investment Obligations** means and includes any of the following obligations to the extent the same are at the time legal for investment of funds of the State under the Act, the Revenue Obligations Act, or under other applicable law:

1. Direct obligations of or obligations guaranteed by the United States of America;
2. Obligations the payment of principal and interest on which, by act of Congress or in the opinion of the Attorney General of the United States in office at the time such obligations were issued, are unconditionally guaranteed by the United States of America;
3. Bonds, debentures, notes, participation certificates or other similar evidences of indebtedness issued by any of the following: Federal Land Banks, Federal Home Loan Banks, Federal Intermediate Credit Banks, Banks for Cooperatives, the Federal Financing Bank, the Federal Home Loan Mortgage Corporation, Federal National Mortgage Association, Export Import Bank of the United States, Student Loan Marketing Association, Farmer's Home Administration, Government National Mortgage Association, Small Business Administration, or any other agency or corporation which has been or may hereafter be created by or pursuant to an Act of Congress of the United States as an agency or instrumentality thereof or sponsored thereby (including but not limited to the fully guaranteed portion of an obligation partially guaranteed by any of the foregoing, if the State's ownership of such portion is acknowledged in writing by an officer of the guaranteeing agency or instrumentality);
4. Public Housing Bonds issued by public agencies or municipalities and fully secured as to the payment of both principal and interest by a pledge of annual contributions under an annual contributions contract or contracts with the United States of America or temporary notes, preliminary loan notes or project notes issued by public agencies or municipalities, in each case, fully secured as to the payment of both principal and interest by a requisition or payment agreement with the United States of America;
5. Obligations of any state within the United States or of any political subdivision of any state, provided that at the time of purchase such obligations are rated in either of the two highest rating categories by a nationally recognized bond rating agency;
6. Bankers acceptances drawn on and accepted by banks (including the Trustee and Paying Agent) and certificates of deposit by banks (including the Trustee and Paying Agent), with a combined capital and surplus aggregating at least \$100,000,000 and securities of which are currently rated within the two highest rating categories assigned by a nationally recognized rating agency, or the international branches or banking subsidiaries thereof;
7. Interest-bearing time deposits, or certificates of deposit of a bank (including the Trustee and Paying Agent) or trust company, continuously secured and collateralized by obligations of the type described in clauses (1), (2), (3) and (4) hereof, having a market value at least equal at all times to the amount of such deposit or certificate, to the extent such deposit or certificate is not

insured by the Federal Deposit Insurance Corporation or the Federal Savings and Loan Insurance Corporation, or any successors thereto;

8. Commercial paper given the highest rating by Standard & Poor's Corporation and Moody's Investors Service at the time of such investments;
9. Investment agreements with banks or bank holding companies the senior long-term debt securities of which are rated within the two highest categories by a nationally recognized rating agency and which have a capital and surplus of at least \$100,000,000;
10. Repurchase agreements, with banks or other financial institutions (including the Trustee and Paying Agent) (**Repurchaser**) provided that each such repurchase agreement (a) is in a commercially reasonable form and is for a commercially reasonable period, and (b) result in transfer to the Trustee of legal and equitable title to, or the granting to the Trustee of a prior perfected security interest in, identified obligations referred to in clauses (1), (2), (3) and (4) above which are free and clear of any claims by third parties and are segregated in a custodial or trust account held either by the Trustee or by a third party (other than the Repurchaser) as the agency solely of, or in trust solely for the benefit of the Trustee, provided that obligations acquired pursuant to such repurchase agreements shall be valued at the lower of the then current market value of such obligations or the repurchase prices thereof set forth in the applicable repurchase agreement, such investments shall be made so as to mature on or prior to the date or dates that the Trustee anticipates that moneys therefrom be required;
11. Shares of beneficial interests in an investment fund or trust substantially all of whose assets consist of those identified obligations referred to in clauses (1) and (2) above; and
12. Any short term government fund whose assets consist of those identified obligations referred to in clauses (1), (2), (3), (4) and (10) above.

**Notes or Commercial Paper Notes** means, in aggregate, the State of Wisconsin Transportation Revenue Commercial Paper Notes of 1997, Series A, the State of Wisconsin Transportation Revenue Commercial Paper Notes of 2006, Series A, and the State of Wisconsin Transportation Revenue Commercial Paper Notes of 2013, Series A.

**Outstanding**, when used with reference to Bonds and as of any particular date, describes all Bonds that have been delivered and are expected to be delivered except (a) any Bond cancelled by the Trustee, or proven to the satisfaction of the Trustee to have been cancelled by the Registrar, at or before said date, (b) any Bond deemed to have been paid in accordance with the provisions of Section 1201 of the General Resolution, and (c) any Bond in lieu of or in substitution for which another Bond shall have been delivered pursuant to the requirements of the General Resolution or any Series Resolution.

**Paying Agent** for the payment of the principal of, Redemption Price and interest on the Bonds of a particular Series means the Treasurer or any bank or trust company designated as paying agent for the Bonds, and its successor or successors hereafter appointed in the manner provided in the General Resolution.

**Principal and Interest Account** means the account established by Section 502 of the General Resolution.

**Principal Installment** means (a) the principal amount of Outstanding Bonds that mature on a single future date, and (b) the amount of any Sinking Fund Installment required to be paid on a single future date.

**Principal Installment Dates** means any dates designated in a Series Resolution as a day a Principal Installment is to be paid.

**Principal Requirement** means, as of any particular date of calculation, the amount of money equal to any unpaid Principal Installment then due with respect to each Series of Outstanding Bonds and the amount of the next succeeding Principal Installment divided by the number of Redemption Fund Deposit Days prior to the next Principal Installment Date with respect to each Series of Outstanding Bonds.

**Program** means the State of Wisconsin Transportation Facilities and Highway Projects Revenue Obligations Program financed under the Act, the Revenue Obligations Act and the General Resolution in accordance with any other enactment of the State which may hereafter specify an extension, expansion, addition or improvement of and for said Program pursuant to the Act, the Revenue Obligations Act and the General Resolution but not financed under the provisions of any other bond resolution or indenture of trust.

**Program Account** means the account so designated by Section 402 of the General Resolution.

**Program Capital Fund** means the Fund that is established and created by Section 402 of the General Resolution and pursuant to Section 18.57 of the Revenue Obligations Act.

**Program Expense Fund** means the Fund that is established and created by Section 514 of the General Resolution.

**Program Expenses** means the reasonable and proper costs and expenses of the Department of Transportation for the operation and maintenance of the Program, including, without limitation, the administrative expenses allocable to the Program and the fees and expenses of the Trustee and the Paying Agents and Registrars of the Bonds.

**Program Income** means moneys derived under Sections 341.25, 341.09(2)(d), (2m)(a)1., (4), and (7), 341.14(2), (2m), (6)(d), (6m)(a), (6r)(b)2., (6w), and (8), 341.145(3), 341.16(1)(a) and (b), (2), and (2m), 341.17(8), 341.19(1)(a), 341.255(1), (2)(a), (b), and (c), (4), and (5), 341.26(1), (2), (2m)(am)and(b), (3), (3m), (4), (5), and (7), 341.264(1), 341.265(1), 341.266(2)(b) and (3), 341.268(2)(b) and (3), 341.30(3), 341.305(3), 341.308(3), 341.36(1) and (1m), 341.51(2), and 342.14, except Section 342.14(lr), of the Wisconsin Statutes or any other moneys that the State is authorized to pledge, which is to be deposited by the Department of Transportation under Section 18.562(3) and (5) of the Revenue Obligations Act in a separate and distinct fund outside of the State Treasury in an account maintained by the Trustee as the Redemption Fund and all interest earned or gain realized from the investment of amounts in said fund.

**Program Income Account** means the account established by Section 502 of the General Resolution.

**Projects** means the projects authorized under the Act and funded with proceeds of Bonds authorized by one or more Series Resolutions.

**Redemption Date** means the date upon which Bonds are to be called for redemption.

**Redemption Fund** means the Fund that is established and created by Section 502 of the General Resolution pursuant to Section 18.562(3) of the Revenue Obligations Act.

**Redemption Fund Deposit Day** means January 1<sup>st</sup>, April 1<sup>st</sup>, July 1<sup>st</sup>, and October 1<sup>st</sup> of each Fiscal Year.

**Redemption Price** when used with respect to a Bond or portion thereof, means the principal amount of such Bond or portion plus the applicable premium, if any, payable upon redemption thereof in the manner contemplated in accordance with its terms pursuant to the General Resolution and to the Series Resolution.

**Registrar** means, with respect to Bonds of a particular Series, the Treasurer or any person with whom he has contracted with for the performance of any of his functions under Section 18.10(5) and (7), Wisconsin Statutes.

**Reserve Fund** means the Fund that is established and created by Section 508 of the General Resolution pursuant to Section 18.562 of the Revenue Obligations Act.

**Revenue Obligations Act** means Subchapter II of Chapter 18 of the Wisconsin Statutes, as amended.

**Secretary** means the Secretary of the Department of Transportation or any other officer, board, body, commission or agency succeeding to the powers, duties and functions thereof.

**Serial Bonds** means the Bonds so designated in a Series Resolution.

**Series**, when used with respect to less than all of the Bonds, means and refers to all of the Bonds delivered on original issuance in a simultaneous transaction, regardless of variations in maturity, interest rate or other provisions, and any Bond thereafter delivered in lieu of or substitution for any of such Bonds pursuant to the General Resolution or a Series Resolution.

**Series Resolution** means any resolution adopted by the Commission pursuant to and in accordance with the terms of Article II of the General Resolution, providing for the issuance of a particular Series of Bonds.

**Sinking Fund Installment** means the amount of money unconditionally required by or pursuant to a Series Resolution to be paid toward the retirement of any particular Term Bonds prior to their respective stated maturities.

**State** means the State of Wisconsin, including the Commission, or Department of Transportation, as the case may be, acting on behalf of the State pursuant to the Act or the Revenue Obligations Act, or any body, agency or instrumentality of the State which shall hereafter succeed to the powers, duties and functions of any of the foregoing.

**Statutes** means the Wisconsin Statutes.

**Subordinated Debt Service Fund** means an account established in Section 5.1 of 1997 State of Wisconsin Building Commission Resolution 7, adopted by the Commission on April 23, 1997, as amended, pursuant to Section 714(C) of the General Resolution, and pledged to the payment of the Commercial Paper Notes.

**Subordinated Debt Service Fund Requirement** means, as of any date of calculation, an amount equal to the aggregate Subordinated Debt Service Fund Requirements for each Subordinated Indebtedness Series of Outstanding Bonds (or Commercial Paper Notes) as specified with respect to each such Series in the applicable Series Resolution.

**Subordinated Indebtedness** means a Series of Bonds issued pursuant to Section 714 of the General Resolution, and includes the Commercial Paper Notes.

**Supplemental Resolution** means any resolution adopted by the Commission pursuant to and in accordance with the terms of Article VIII of the General Resolution amending or supplementing the provisions of the General Resolution as originally adopted or as amended or supplemented prior to the amending or supplementing affected by the particular Supplemental Resolution.

**Term Bonds** means the Bonds so designated in a Series Resolution.

**Transportation Fund** means the fund established in Section 25.40, Wisconsin Statutes.

**Treasurer** means the State Treasurer or any other officer, board, body, commission or agency succeeding to any of the powers, duties and functions thereof.

**Trustee** means The Bank of New York Mellon Trust Company, N.A., as trustee appointed by or pursuant to Section 1101 of the General Resolution, and its successor or successors and any other corporation or association that may at any time be substituted in its place pursuant to the General Resolution.

## **APPENDIX A**

### **AUDITED FINANCIAL STATEMENTS**

The following are the independent auditor's report and audited statements of cash receipts and disbursements for the years ended June 30, 2015 and June 30, 2014, and include (1) for the Transportation Revenue Bond Program, the Independent Auditors' Report, dated October 15, 2015, together with unaudited information pertaining to the Program Income, and (2) for the Transportation Revenue Commercial Paper Program, the Independent Auditors' Report, dated October 15, 2015, together with unaudited information pertaining to the Program Income.

{This page number is the last sequential page number of the 2015 Annual Report to be used in Part V of the 2015 Annual Report. The following uses page numbers from the independent auditor's reports, audited statements of cash receipts and disbursements, and unaudited supplementary information pertaining to Program Income. The sequential page numbers for the 2015 Annual Report continue in Part VI.}

**WISCONSIN DEPARTMENT OF TRANSPORTATION  
REVENUE BOND PROGRAM**

**Statements of Cash Receipts and Disbursements  
for the Fiscal Years Ended June 30, 2015 and 2014  
with Independent Auditors' Report**

**WISCONSIN DEPARTMENT OF TRANSPORTATION  
REVENUE BOND PROGRAM**

**TABLE OF CONTENTS**

---

	<b>Page</b>
INDEPENDENT AUDITORS' REPORT	1 - 2
STATEMENTS OF CASH RECEIPTS AND DISBURSEMENTS For the Fiscal Years Ended June 30, 2015 and 2014	3
NOTES TO STATEMENTS OF CASH RECEIPTS AND DISBURSEMENTS	4 - 13
SUPPLEMENTARY INFORMATION	
Schedule of Monthly Motor Vehicle Registration and Registration-Related Fees Retained by Trustee	14
Bonds Outstanding - 1998 Series A	15
Bonds Outstanding - 2005 Series A	16
Bonds Outstanding - 2005 Series B	17
Bonds Outstanding - 2007 Series 1	18
Bonds Outstanding - 2008 Series A	19
Bonds Outstanding - 2009 Series B (Taxable)	20
Bonds Outstanding - 2010 Series A	21
Bonds Outstanding - 2010 Series B (Taxable)	22
Bonds Outstanding - 2012 Series 1	23
Bonds Outstanding - 2012 Series 2	24
Bonds Outstanding - 2013 Series 1	25
Bonds Outstanding - 2014 Series 1	26
Bonds Outstanding - 2014 Series 2	27
Bonds Outstanding - 2015 Series 1	28
UNAUDITED INFORMATION	
Schedule of Program Revenue (Unaudited)	29
Schedule of Motor Vehicle Registration and Registration-Related Fees - Cash Basis (Unaudited)	30

## INDEPENDENT AUDITORS' REPORT

To the Wisconsin Department of Transportation  
State of Wisconsin

### **Report on the Financial Statements**

We have audited the accompanying statements of cash receipts and disbursements of the Wisconsin Department of Transportation Revenue Bond Program (the "Program") for the fiscal years ended June 30, 2015 and 2014, and the related notes to the statements of cash receipts and disbursements.

### ***Management's Responsibility for the Financial Statements***

Management is responsible for the preparation and fair presentation of these financial statements in accordance with the cash basis of accounting described in Note 2; this includes determining that the cash basis of accounting is an acceptable basis for the preparation of the financial statements in the circumstances. Management is also responsible for the design, implementation, and maintenance of internal control relevant to the preparation and fair presentation of financial statements that are free from material misstatement, whether due to fraud or error.

### ***Auditors' Responsibility***

Our responsibility is to express an opinion on these financial statements based on our audit. We conducted our audit in accordance with auditing standards generally accepted in the United States of America and the standards applicable to financial audits contained in *Government Auditing Standards*, issued by the Comptroller General of the United States. Those standards require that we plan and perform the audit to obtain reasonable assurance about whether the financial statements are free of material misstatement.

An audit involves performing procedures to obtain audit evidence about the amounts and disclosures in the financial statements. The procedures selected depend on the auditors' judgment, including the assessment of the risks of material misstatement of the financial statements, whether due to fraud or error. In making those risk assessments, the auditors consider internal control relevant to the Program's preparation and fair presentation of the financial statements in order to design audit procedures that are appropriate in the circumstances, but not for the purpose of expressing an opinion on the effectiveness of the Program's internal control. Accordingly, we express no such opinion. An audit also includes evaluating the appropriateness of accounting policies used and the reasonableness of significant accounting estimates made by management, as well as evaluating the overall presentation of the financial statements.

We believe that the audit evidence we have obtained is sufficient and appropriate to provide a basis for our audit opinion.

### ***Opinion***

In our opinion, the financial statements referred to in the first paragraph present fairly, in all material respects, the statements of cash receipts and disbursements of the Wisconsin Department of Transportation Revenue Bond Program for the years ended June 30, 2015 and 2014, in accordance with the cash basis of accounting as described in Note 2.



### ***Basis of Accounting***

We draw attention to Note 2 of the notes to the statements of cash receipts and disbursements, which describes the basis of accounting. This financial statement is prepared on the cash basis of accounting, which is a basis of accounting other than accounting principles generally accepted in the United States of America. Our opinion is not modified with respect to that matter.

### ***Other Matters***

Management has omitted the management's discussion and analysis that accounting principles generally accepted in the United States of America require to be presented to supplement the financial statements. Such missing information, although not a part of the financial statements, is required by the Governmental Accounting Standards Board, who considers it to be an essential part of financial reporting for placing the financial statements in an appropriate operational, economic, or historical context. Our opinion on the financial statements is not affected by this missing information.

Our audit was conducted for the purpose of forming an opinion on the statements of cash receipts and disbursements of the Program as a whole. The financial information listed in the table of contents as supplementary information on pages 14 through 28 are presented for purposes of additional analysis and are not a required part of the financial statements. The supplementary information is the responsibility of management and was derived from and relates directly to the underlying accounting and other records used to prepare the financial statements. The information has been subjected to the auditing procedures applied in the audit of the financial statements and certain additional procedures, including comparing and reconciling such information directly to the underlying accounting and other records used to prepare the financial statements or to the financial statements themselves, and other additional procedures in accordance with auditing standards generally accepted in the United States of America. In our opinion, the information is fairly stated in all material respects in relation to the financial statements as a whole.

The schedule of program revenue and schedule of motor vehicle registration and registration-related fees – cash basis on pages 29 and 30 have not been subject to the auditing procedures applied in the audits of the statements of cash receipts and disbursements and, accordingly, we do not express an opinion or provide any assurance on them.

### ***Other Reporting Required by Government Auditing Standards***

In accordance with *Government Auditing Standards*, we have also issued our report dated October 15, 2015, on our consideration of the Program's internal control over financial reporting and on our tests of its compliance with certain provisions of laws, regulations, contracts and grant agreements and other matters. The purpose of that report is to describe the scope of our testing of internal control over financial reporting and compliance and the results of that testing, and not to provide an opinion on the internal control over financial reporting or on compliance. That report is an integral part of an audit performed in accordance with *Government Auditing Standards* in considering the Program's internal control over financial reporting and compliance.

*Schenck SC*

Certified Public Accountants  
Green Bay, Wisconsin  
October 15, 2015

# WISCONSIN DEPARTMENT OF TRANSPORTATION REVENUE BOND PROGRAM

## STATEMENTS OF CASH RECEIPTS AND DISBURSEMENTS FISCAL YEARS ENDED JUNE 30, 2015 AND 2014

	<b>2015</b>	<b>2014</b>
CASH AND INVESTMENTS, BEGINNING OF FISCAL YEAR	\$ 489,181,499	\$ 236,057,948
<b>RECEIPTS:</b>		
Motor vehicle registration fees retained by Trustee	194,293,681	194,747,937
Investment income	429,327	2,837,276
Revenue bond proceeds - par value	-	300,000,000
Revenue bond proceeds - accrued interest and original issuance premium, net of underwriter's discount	-	31,461,500
Revenue refunding bond proceeds - par value	301,370,000	39,745,000
Revenue refunding bond proceeds - accrued interest and original issuance premium, net of underwriter's discount	55,064,253	2,962,356
Total receipts	551,157,261	571,754,069
<b>DISBURSEMENTS:</b>		
Debt service - principal	108,385,000	94,835,000
Debt service - interest	92,516,204	84,950,106
Net premium paid/(discount earned) on investments	293,458	2,999,298
Highway program expenditures	213,408,541	134,598,039
Program expenses - revenue bond program	54,003	25,906
Program expenses - commercial paper program	702,477	635,437
Bond issuance costs	677,455	586,732
Defeasance of debt - payment to current noteholders	42,630,000	-
Defeasance of debt - purchase of securities for escrow account	267,321,788	-
Total disbursements	725,988,926	318,630,518
CASH AND INVESTMENTS, END OF FISCAL YEAR	\$ 314,349,834	\$ 489,181,499
Cash and investments restricted for debt service	\$ 243,012,192	\$ 195,666,036
Cash and investments restricted for program expenses	224,317	33,191
Cash and investments restricted for highway expenditures	71,113,324	284,378,887
Cash and investments in the reserve fund	-	9,103,385
	\$ 314,349,834	\$ 489,181,499

See notes to statements of cash receipts and disbursements.

# WISCONSIN DEPARTMENT OF TRANSPORTATION REVENUE BOND PROGRAM

## NOTES TO STATEMENTS OF CASH RECEIPTS AND DISBURSEMENTS FOR THE FISCAL YEARS ENDED JUNE 30, 2015 AND 2014

### 1. NATURE OF PROGRAM

The State of Wisconsin Transportation Revenue Bond Program (the "Program") originated in April 1984 pursuant to the adoption of the General Resolution, as amended, by the State of Wisconsin Building Commission. The purpose of the Program is to provide financing for the construction, maintenance and repair of certain major highway projects and administrative facilities. Receipts provided from motor vehicle registration fees and certain other vehicle registration-related fees are used to service the Program's borrowing obligations. The Wisconsin Department of Transportation ("Department") is responsible for managing the construction projects and the collection of motor vehicle registration fees and certain other vehicle registration-related fees.

The Department has statutory authority (as amended) as of June 30, 2015, to issue a total of \$3,768,059,300 of revenue obligations (excluding refunded bonds), in order to partially finance the costs of the authorized projects, in addition to proceeds from State of Wisconsin ("State") general obligation debt, federal aid and other money in the State Transportation Fund. As of June 30, 2015, the Department has remaining authority to issue \$243,213,091 of additional obligations.

As part of the State's reporting entity, the Program's financial information is included in the State of Wisconsin Comprehensive Annual Financial Report.

### 2. SUMMARY OF SIGNIFICANT ACCOUNTING POLICIES

***Cash Receipts and Disbursements Basis of Accounting***—The statements of cash receipts and disbursements present the Program's cash receipts and disbursements, which is a comprehensive basis of accounting other than accounting principles generally accepted in the United States of America. Under this basis of accounting, cash receipts are recorded when received and disbursements are recorded when paid. The Program's cash and investments balance is presented at cost.

The Department has entered into trust agreements, as amended, with The Bank of New York Mellon Trust Company, N.A. (the "Trustee"), relating to the creation and administration of the State of Wisconsin Transportation Revenue Bonds, 1998 Series A, 2005 Series A, 2005 Series B, 2007 Series A, 2007 Series 1, 2008 Series A, 2009 Series B (Taxable), 2010 Series A, 2010 Series B (Taxable), 2012 Series 1, 2012 Series 2, 2013 Series 1, 2014 Series 1, 2014 Series 2, and 2015 Series 1. Among other provisions, the trust agreements, in conjunction with the General Resolution, specify those funds to be created and maintained, the timing and flow of monies through the funds, the determination of the debt service reserve requirements (see Note 6) and the procedure to be followed for the redemption of the bonds. It is the Department's view that the statements of cash receipts and disbursements along with the related notes meet the reporting requirements of the trust agreements.

# WISCONSIN DEPARTMENT OF TRANSPORTATION REVENUE BOND PROGRAM

## NOTES TO STATEMENTS OF CASH RECEIPTS AND DISBURSEMENTS FOR THE FISCAL YEARS ENDED JUNE 30, 2015 AND 2014

### 2. SUMMARY OF SIGNIFICANT ACCOUNTING POLICIES (Continued)

#### *Receipts and Disbursements:*

*Motor Vehicle Registration Fees Retained by Trustee* - Motor vehicle registration fees and certain other vehicle registration-related fees retained by the Trustee are recorded at time of impounding, when transfer of possession occurs.

*Investment Income* - Investment income is recorded when received.

*Bond Proceeds* - Bond proceeds are recorded as receipts on the date of closing at gross value of the issuance. All related fees are reported as bond issuance costs within disbursements.

*Debt Service - Principal and Interest* - Debt service payments are recorded when paid.

*Net Premium Paid/(Discount Earned) on Investments* - The net of the premium paid on investments purchased at more than face value and the discount earned on investments purchased at less than face value.

*Highway Program Expenditures* - Highway program expenditures are recorded when paid by the Program to the Transportation Fund of the State of Wisconsin.

*Program Expenses – Revenue Bond Program* - Program expenses are recorded when paid.

*Program Expenses - Commercial Paper Program* - Represents payments for expenses made by the Revenue Bond Program on behalf of the Commercial Paper Program.

*Bond Issuance Costs* - Costs associated with issuing bonds, such as legal, financial advisor and accounting fees, are recorded when paid. For bonds issued late in the fiscal year, subsequent payment of the related issuance costs may occur and be reported in the fiscal year following issuance of the bonds and recording of the bond proceeds.

### 3. CASH AND INVESTMENTS

The Program's investment policies are governed by the General Resolution and Wisconsin Statutes. The Program is authorized to invest in direct obligations of or obligations guaranteed by the United States, obligations of agencies created or sponsored by an Act of Congress, obligations of any state or municipality that are rated in either of the two highest rating categories by a nationally recognized bond rating agency, bankers acceptances and certificates of deposit from banks with combined capital and surplus aggregating at least \$100 million whose securities are rated within the two highest rating categories assigned by a nationally recognized rating agency, corporate commercial paper given the highest rating by Standard & Poor's Ratings Services and Moody's Investors Service, Inc., and a fund whose assets consist of direct obligations or obligations guaranteed by the United States or obligations of agencies created or sponsored by Congress. Program assets are to be invested in the highest yielding authorized securities, with maturity or redemption dates coinciding as closely as possible with cash flow and liquidity needs of Program operations.

# WISCONSIN DEPARTMENT OF TRANSPORTATION REVENUE BOND PROGRAM

## NOTES TO STATEMENTS OF CASH RECEIPTS AND DISBURSEMENTS FOR THE FISCAL YEARS ENDED JUNE 30, 2015 AND 2014

### 3. CASH AND INVESTMENTS (Continued)

During fiscal years 2015 and 2014, the Program's assets were held in deposit accounts or invested in a money market fund, U.S. government securities, and federal agency securities by the Trustee. The money market fund invests exclusively in obligations of the U.S. Treasury, including Treasury bills, bonds and notes. Program assets are reported at cost.

The following table summarizes the cost and fair market value for each of the investments:

Cash/Investment	June 30, 2015		June 30, 2014	
	Cost	Fair Value	Cost	Fair Value
Bank of New York Cash Reserve (deposit account)	\$51,003,182	\$51,003,182	\$176,932,246	\$176,932,246
Money Market Fund				
• Dreyfus Treasury Cash Management	127,970,447	127,970,447	127,337,385	127,337,385
Federal Agency Securities				
• Federal Home Loan Mortgage Corp Discount Notes	25,563,105	25,569,000	119,927,667	119,928,000
• Federal Home Loan Bank Discount Notes	82,888,639	82,903,400	64,984,201	64,990,250
• Federal National Mortgage Association Discount Notes	<u>26,924,461</u>	<u>26,956,000</u>	<u>-</u>	<u>-</u>
Totals	<u>\$314,349,834</u>	<u>\$314,402,029</u>	<u>\$489,181,499</u>	<u>\$489,187,881</u>

Investments of the Program are subject to various risks:

- Custodial credit risk is the risk that, in the event of failure of the counterparty (e.g., broker-dealer) to a transaction, the Program will not be able to recover the value of investments or collateral securities that are in the possession of another party. Securities of the U.S. government and its agencies were registered and held by the Program's agent in the Program's name. The deposit account is FDIC-insured up to \$250,000 but is not collateralized. Money market funds are not insured or collateralized.
- Credit risk is the risk that an issuer of an investment will not fulfill its obligation to the holder of the investment. This risk is measured by the assignment of a rating by a nationally recognized statistical rating organization, such as Standard & Poor's Ratings Services, Moody's Investors Service, Inc., and Fitch Ratings. As of June 30, 2015, the deposit account was rated AA1 by Moody's, AA- by Standard & Poor's and AA by Fitch. Standard & Poor's rating for U.S. government and federal agencies securities was AA+. Fitch's rating for the government fund was A. All remaining investments were rated AAA.

# WISCONSIN DEPARTMENT OF TRANSPORTATION REVENUE BOND PROGRAM

## NOTES TO STATEMENTS OF CASH RECEIPTS AND DISBURSEMENTS FOR THE FISCAL YEARS ENDED JUNE 30, 2015 AND 2014

### 3. CASH AND INVESTMENTS (Continued)

- Concentration of credit risk may be a concern if investments in any one issuer represent 5 percent or more of net Program assets, excluding investments issued or explicitly guaranteed by the U.S. government and investments in mutual funds, external investment pools, and other pooled investments. Concentration of credit risk is not addressed in the Program's investment requirements. As of June 30, 2015, 16 percent of the Program's assets were held in a deposit account. 43 percent of the Program's assets were invested in federal agency securities and 41 percent in a money market fund; however, this fund solely invests in U.S. government securities.
- Interest rate risk is the risk that changes in market interest rates will adversely affect the fair value of an investment. Generally, the longer the maturity of an investment, the greater the sensitivity of its fair value to changes in market interest rates. Money market funds are liquid, having no future maturity dates. The Federal Home Bank Discount Notes will mature on July 15, 2015. The Federal Home Loan Mortgage Corporation Discount Notes and Fannie Mae Discount Notes will mature on July 1, 2015.
- Foreign currency risk is the risk that changes in currency exchange rates will adversely affect the fair value of an investment. Foreign currency holdings are not specifically addressed in the Program's investment requirements; however, no investments denominated in foreign currency were held by the Program as of June 30, 2015.

### 4. REVENUE BONDS

The Program's revenue obligations are issued pursuant to Subchapter II of Chapter 18 of the Wisconsin Statutes as amended, Section 84.59 of the Wisconsin Statutes and a General Resolution and Series Resolutions adopted by the State of Wisconsin Building Commission. The bonds are revenue obligations of the State, payable solely from the Redemption Fund created by the General Resolution. The bonds are collateralized by a first lien pledge of income derived from vehicle registration fees under Section 341.25 of the Wisconsin Statutes and certain other vehicle registration-related fees, as collected by the Trustee ("Program Income"). The State has covenanted in the General Resolution that it will charge motor vehicle registration fees and certain other vehicle registration-related fees sufficient to pay principal and interest on the bonds, as they become due, to pay program expenses and to maintain the debt service reserve requirement. Fees collected in excess of the amount needed to service this Program, and outstanding Wisconsin Department of Transportation Revenue Commercial Paper Notes, are transferred to the Department free of the first lien pledge of the General Resolution. The State is not generally liable on the bonds nor are the projects financed by the bonds pledged as collateral.

# WISCONSIN DEPARTMENT OF TRANSPORTATION REVENUE BOND PROGRAM

## NOTES TO STATEMENTS OF CASH RECEIPTS AND DISBURSEMENTS FOR THE FISCAL YEARS ENDED JUNE 30, 2015 AND 2014

### 4. REVENUE BONDS (Continued)

A summary of these revenue obligations outstanding as of June 30, 2015 and 2014 is as follows:

	2015	2014
Transportation Revenue Bonds, 1998 Series A, fixed interest rate of 5.5%, interest payable semiannually, annual principal payments of variable amounts through 2016	\$ 17,185,000	\$ 25,100,000
Transportation Revenue Bonds, 2003 Series A, fixed interest rate of 5.0%, interest payable semiannually, final annual principal payment in 2014	-	11,730,000
Transportation Revenue Refunding Bonds, 2004 Series 1, fixed interest rate of 5.25%, interest payable semiannually, final annual principal payment in 2014	-	58,975,000
Transportation Revenue Bonds, 2005 Series A, varying fixed interest rates of 5.0% interest payable semiannually, annual principal payments of variable amounts through 2020	165,545,000	176,040,000
Transportation Revenue Bonds, 2005 Series B, fixed interest rate of 5.0%, interest payable semiannually, annual principal payments of variable amounts through 2015	10,400,000	20,305,000
Transportation Revenue Bonds, 2007 Series A, fixed interest rate of 4.25%, interest payable semiannually, final annual principal payment in 2027	-	18,340,000
Transportation Revenue Refunding Bonds, 2007 Series 1, varying fixed interest rates from 4.35% to 5.0%, interest payable semiannually, annual principal payments of variable amounts through 2022	203,580,000	206,900,000
Transportation Revenue Bonds, 2008 Series A, fixed interest rate of 5.0%, interest payable semiannually, annual principal payments of variable amounts through 2018	30,780,000	160,885,000
Transportation Revenue Bonds, 2009 Series A, fixed interest rate of 3.5%, interest payable semiannually, final annual principal payment in 2014	-	6,170,000
Transportation Revenue Bonds, 2009 Series B (Taxable), varying fixed interest rates from 2.23% to 3.80%, interest payable semiannually, annual principal payments of variable amounts through 2030	147,130,000	147,130,000
Transportation Revenue Bonds, 2010 Series A, fixed interest rate of 5.0%, interest payable semiannually, annual principal payments of variable amounts through 2021	57,005,000	63,675,000

# WISCONSIN DEPARTMENT OF TRANSPORTATION REVENUE BOND PROGRAM

## NOTES TO STATEMENTS OF CASH RECEIPTS AND DISBURSEMENTS FOR THE FISCAL YEARS ENDED JUNE 30, 2015 AND 2014

### 4. REVENUE BONDS (Continued)

	2015	2014
Transportation Revenue Bonds, 2010 Series B (Taxable), varying fixed interest rates from 4.7% to 6.0%, interest payable semiannually, annual principal payments of variable amounts through 2031	123,925,000	123,925,000
Transportation Revenue Bonds, 2012 Series 1, varying fixed interest rates from 3.5% to 5.0%, interest payable semiannually, annual principal payments of variable amounts through 2032	284,945,000	313,980,000
Transportation Revenue Bonds, 2012 Series 2, varying fixed interest rates from 4.0% to 5.0%, interest payable semiannually, annual principal payments of variable amounts through 2024	116,400,000	116,400,000
Transportation Revenue Bonds, 2013 Series 1, varying fixed interest rates from 4.0% to 5.0%, interest payable semiannually, annual principal payments of variable amounts through 2033	259,680,000	259,680,000
Transportation Revenue Bonds, 2014 Series 1, varying fixed interest rates from 2.0% to 5.0%, interest payable semiannually, annual principal payments of variable amounts through 2034	242,940,000	339,745,000
Transportation Revenue Bonds, 2014 Series 2, fixed interest rates of 5.0%, interest payable semiannually, annual principal payments of variable amounts through 2027	94,130,000	-
Transportation Revenue Bonds, 2015 Series 1, varying fixed interest rates from 1.0% to 5.0%, interest payable semiannually, annual principal payments of variable amounts through 2029	<u>207,240,000</u>	<u>-</u>
Total principal amount of bonds outstanding at June 30	1,960,885,000	2,048,980,000
Less: current maturities		
Available bond proceeds for current refunding	88,400,000	42,630,000
Transportation revenue financed	<u>107,690,000</u>	<u>108,385,000</u>
Subtotal	<u>196,090,000</u>	<u>151,015,000</u>
Principal outstanding at June 30 due beyond one year	\$ <u>1,764,795,000</u>	\$ <u>1,897,965,000</u>

At June 30, 2015 and 2014, the Program had cash and investments totaling \$88,400,000 and \$42,630,000, respectively, from bond proceeds to be used to retire principal payments due July 1 of the subsequent fiscal year.

Additional series of bonds may be issued on par with the current bond series outstanding and collateralized by an equal charge and lien on the Program Income. However, no additional series may be issued unless, among other things, Program Income, including interest, for 12 consecutive months within the preceding 18-month period is at least 2.25 times the maximum aggregate principal and interest requirement in any bond year for all outstanding bonds.



# WISCONSIN DEPARTMENT OF TRANSPORTATION REVENUE BOND PROGRAM

## NOTES TO STATEMENTS OF CASH RECEIPTS AND DISBURSEMENTS FOR THE FISCAL YEARS ENDED JUNE 30, 2015 AND 2014

### 4. REVENUE BONDS (Continued)

Future maturities of bonds payable as of June 30, 2015 are as follows:

Fiscal Year Ending June 30,	
2016	\$ 196,090,000
2017	102,395,000
2018	100,870,000
2019	117,025,000
2020	122,050,000
2021 – 2025	612,910,000
2026 – 2030	448,215,000
2031 – 2035	261,330,000
	<u>\$1,960,885,000</u>

The 2009 Series B (Taxable) and 2010 Series B (Taxable) Bonds are “qualified build America bonds” pursuant to Section 54AA of the Internal Revenue Code of 1986, as amended. The State expects to receive 35% of the interest payable to bondholders from the United States Treasury. Interest subsidies from the United States Treasury received in connection with these “build America bonds” are not pledged to the payment of principal, interest, or redemption price on the bonds and are not reported as income to the Program. The \$4.7 million subsidy for interest due January 1 and July 1, 2015, was received and deposited in the State Transportation Fund. The subsidy was reduced by \$.04 million (7.2%), as required by the Budget Control Act of 2011 (federal budget sequestration).

### 5. DEFEASED REVENUE BONDS

From time to time, the Program issues revenue bonds to defease older revenue bonds in order to generate debt service savings. The proceeds from the issuance of revenue bonds, together with assets transferred from the refunded bond series, are deposited with a trustee bank in a separate Escrow Account. These funds are invested by an escrow agent in U.S. Treasury obligations and certain other government securities so that sufficient monies are available to pay the principal, interest and redemption price of the defeased bonds.

A summary of the debt service savings and economic gain (present value of debt service savings) as a result of refunding transactions during the fiscal years ended June 30, 2015 and 2014 follows:

Refunding Issue	Debt Service Savings	Economic Gain
2015 Series 1	\$ 23,817,151	\$ 20,482,348
2014 Series 2	\$ 8,217,454	\$ 6,656,361
2014 Series 1	\$ 3,598,370	\$ 3,554,046

# WISCONSIN DEPARTMENT OF TRANSPORTATION REVENUE BOND PROGRAM

## NOTES TO STATEMENTS OF CASH RECEIPTS AND DISBURSEMENTS FOR THE FISCAL YEARS ENDED JUNE 30, 2015 AND 2014

### 5. DEFEASED REVENUE BONDS (Continued)

Defeased bonds, totaling \$506.2 million as of June 30, 2015, are not included in the outstanding revenue bonds summarized in Note 4. Also, the related securities in the Escrow Accounts are not included in the Program's cash and investments balance. Once defeased, no related activity in the Escrow Accounts is reported in the Program's Statements of Cash Receipts and Disbursements. The following is a summary of these defeased bonds at June 30, 2015.

The existing revenue bonds defeased by 2012 Series 2 are detailed as follows:

Series	Maturity	Principal Amount	Redemption Date	Redemption Price
2005 Series A	July 1, 2022	\$ 13,130,000		
	July 1, 2023	13,790,000		
	July 1, 2024	<u>14,480,000</u>		
		41,400,000	July 1, 2015	Par
2005 Series B	July 1, 2017	11,465,000	July 1, 2015	Par
2007 Series A	July 1, 2018	11,825,000		
	July 1, 2019	12,415,000		
	July 1, 2020	13,035,000		
	July 1, 2021	13,685,000		
	July 1, 2022	<u>14,370,000</u>		
		<u>65,330,000</u>	July 1, 2015	Par
		<u>\$118,195,000</u>		

The existing revenue bonds defeased by 2013 Series 1 are detailed as follows:

Series	Maturity	Principal Amount	Redemption Date	Redemption Price
2005 Series A	July 1, 2025	\$ 15,200,000	July 1, 2015	Par
2005 Series B	July 1, 2016	10,920,000		
	July 1, 2018	12,040,000		
	July 1, 2019	12,640,000		
	July 1, 2020	13,275,000		
	July 1, 2021	13,940,000		
	July 1, 2022	1,505,000		
	July 1, 2023	1,580,000		
	July 1, 2024	1,660,000		
	July 1, 2025	<u>1,745,000</u>		
		69,305,000	July 1, 2015	Par
2007 Series A	July 1, 2023	15,090,000		
	July 1, 2024	15,845,000		
	July 1, 2025	16,635,000		
	July 1, 2026	<u>17,470,000</u>		
		<u>65,040,000</u>	July 1, 2015	Par
		<u>\$149,545,000</u>		

# WISCONSIN DEPARTMENT OF TRANSPORTATION REVENUE BOND PROGRAM

## NOTES TO STATEMENTS OF CASH RECEIPTS AND DISBURSEMENTS FOR THE FISCAL YEARS ENDED JUNE 30, 2015 AND 2014

### 5. DEFEASED REVENUE BONDS (Continued)

The existing revenue bonds defeased by 2014 Series 2 are detailed as follows:

Series	Maturity	Principal Amount	Redemption Date	Redemption Price
2007 Series A	July 1, 2027	\$18,340,000	July 1, 2015	Par
2008 Series A	July 1, 2019	8,680,000	July 1, 2018	Par
	July 1, 2020	9,115,000		
	July 1, 2021	9,570,000		
	July 1, 2022	10,045,000		
	July 1, 2023	10,550,000		
	July 1, 2024	11,075,000		
	July 1, 2025	11,630,000		
	July 1, 2026	<u>12,210,000</u>		
		<u>82,875,000</u>		
		<u>\$101,215,000</u>		

The existing revenue bonds defeased by 2015 Series 1 are detailed as follows:

Series	Maturity	Principal Amount	Redemption Date	Redemption Price
2008 Series A	July 1, 2027	12,825,000	July 1, 2018	Par
	July 1, 2028	13,465,000		
	July 1, 2029	<u>14,140,000</u>		
		40,430,000		
2014 Series 1	July 1, 2021	13,285,000	July 1, 2019	Par
	July 1, 2022	15,115,000		
	July 1, 2023	15,870,000		
	July 1, 2024	16,665,000		
	July 1, 2025	17,495,000		
	July 1, 2026	<u>18,375,000</u>		
		<u>96,805,000</u>		
		<u>\$137,235,000</u>		

Total defeased bonds outstanding  
at June 30, 2015: \$506,190,000

**WISCONSIN DEPARTMENT OF TRANSPORTATION  
REVENUE BOND PROGRAM**

**NOTES TO STATEMENTS OF CASH RECEIPTS AND DISBURSEMENTS  
FOR THE FISCAL YEARS ENDED JUNE 30, 2015 AND 2014**

**6. DEBT SERVICE RESERVE FUND REQUIREMENT**

The General Resolution creates a Reserve Fund for the Bonds; however, the balance as of June 30, 2015 is zero. The State, pursuant to each Series Resolution, specifies the Debt Service Reserve Requirement ("DSRR"), if any, for each Series of Bonds. The individual DSRRs for each Series of outstanding bonds are combined to determine the aggregate DSRR for the Reserve Fund. Since 2003, the State has not specified a DSRR for any Series of bonds that have been issued. Furthermore, the State does not currently expect to specify a DSRR for any future Series of additional bonds; however, the State reserves the right to change its practice and specify a DSRR for any future Series of additional bonds.

If all the bonds of a Series cease to be Outstanding, then the aggregate DSRR is reduced by the DSRR attributable to that Series of bonds. The aggregate DSRR for all Series of outstanding bonds was reduced to zero on July 1, 2014, and on October 1, 2014, the State transferred, pursuant to the General Resolution, excess funds in the amount of \$9,103,617 from the Reserve Fund to the Principal and Interest Account.

**7. ADMINISTRATIVE EXPENSES**

The Program is not charged for certain departmental administrative expenses incurred by the State of Wisconsin related to the operation of the Program. All such costs are charged to the Transportation Fund of the State of Wisconsin. Costs charged to the Program include expenses of the trustee, audit fees and other direct expenses of the Program. Program expenses of the Transportation Revenue Commercial Paper Program are paid by the Revenue Bond Program.

\* \* \* \* \*

## **SUPPLEMENTARY INFORMATION**

**WISCONSIN DEPARTMENT OF TRANSPORTATION  
REVENUE BOND PROGRAM**

**SUPPLEMENTARY INFORMATION - SCHEDULE OF MOTOR VEHICLE REGISTRATION  
AND REGISTRATION-RELATED FEES RETAINED BY TRUSTEE**

FOR THE YEAR ENDED JUNE 30, 2015

	<u>July 2014</u>	<u>October 2014</u>	<u>January 2015</u>	<u>April 2015</u>	<u>Total</u>
Program Expense	\$ 550,000	\$ -	\$ 192,000	\$ 206,000	\$ 948,000
1998 Series A	2,204,972	2,326,294	2,326,294	2,326,294	9,183,854
2003 Series A	(170,284)	-	-	-	(170,284)
2004 Series 1	(268,615)	-	-	-	(268,615)
2005 Series A	10,334,481	1,422,377	10,525,919	10,525,919	32,808,696
2005 Series B	2,589,296	2,730,000	2,730,000	2,730,000	10,779,296
2007 Series A	190,291	194,863	-	-	385,154
2007 Series 1	3,267,578	3,373,533	3,373,533	3,373,533	13,388,177
2008 Series A	3,550,716	3,711,063	2,675,125	2,675,125	12,612,029
2009 Series A	(101,036)	-	-	-	(101,036)
2009 Series B (Taxable)	3,458,688	3,503,047	3,503,047	3,503,047	13,967,829
2010 Series A	2,355,655	2,462,563	2,462,563	2,462,563	9,743,344
2010 Series B (Taxable)	1,639,804	1,704,171	1,704,171	1,704,171	6,752,317
2012 Series 1	6,303,475	6,722,188	6,722,188	6,722,188	26,470,039
2012 Series 2	1,349,640	1,389,738	1,389,738	1,389,738	5,518,854
2013 Series 1	2,990,239	3,079,375	3,079,375	3,079,375	12,228,364
2014 Series 1	10,150,240	10,145,990	8,630,456	8,630,456	37,557,142
2014 Series 2	1,176,625	1,313,898	-	-	2,490,523
<b>Total</b>	<b>\$ 51,571,762</b>	<b>\$ 44,079,100</b>	<b>\$ 49,314,409</b>	<b>\$ 49,328,409</b>	<b>\$ 194,293,681</b>

July amounts include negative amounts of \$539,935.81 in excess motor vehicle registration and registration-related fees retained by the Trustee in the previous fiscal year and returned to the Wisconsin Department of Transportation.

**WISCONSIN DEPARTMENT OF TRANSPORTATION  
REVENUE BOND PROGRAM**

**SUPPLEMENTARY INFORMATION - BONDS OUTSTANDING - 1998 SERIES A  
JUNE 30, 2015**

---

<b>Maturity July 1,</b>	<b>Rate (%)</b>	<b>Principal</b>
2015	5.50	\$ 8,360,000
2016	5.50	<u>8,825,000</u>
		<u>\$ 17,185,000</u>

**WISCONSIN DEPARTMENT OF TRANSPORTATION  
REVENUE BOND PROGRAM**

**SUPPLEMENTARY INFORMATION - BONDS OUTSTANDING - 2005 SERIES A  
JUNE 30, 2015**

---

<b>Maturity July 1,</b>	<b>Rate (%)</b>	<b>Principal</b>
2015	5.25	\$ 122,105,000 <sup>(1)</sup>
2016	5.25	14,865,000
2020	5.00	<u>28,575,000</u>
		<u>\$ 165,545,000</u>

The Program called the following principal payments on July 1, 2015 using bond proceeds:

<sup>(1)</sup> Maturities due July 1,	
2016	\$ 20,000,000
2017	25,210,000
2018	13,430,000
2019	14,205,000
2021	<u>15,555,000</u>
	<u>\$ 88,400,000</u>



**WISCONSIN DEPARTMENT OF TRANSPORTATION  
REVENUE BOND PROGRAM**

**SUPPLEMENTARY INFORMATION - BONDS OUTSTANDING - 2005 SERIES B  
JUNE 30, 2015**

---

<b>Maturity July 1,</b>	<b>Rate (%)</b>	<b>Principal</b>
2015	5.00	<u>\$ 10,400,000</u>

**WISCONSIN DEPARTMENT OF TRANSPORTATION  
REVENUE BOND PROGRAM**

**SUPPLEMENTARY INFORMATION - BONDS OUTSTANDING - 2007 SERIES 1  
JUNE 30, 2015**

---

<b>Maturity July 1,</b>	<b>Rate (%)</b>	<b>Principal</b>
2015	5.00	\$ 3,510,000
2016	5.00	10,835,000
2017	5.00	22,800,000
2018	5.00	50,180,000
2019	5.00	52,735,000
2020	5.00	33,540,000
2021	4.35	14,670,000
2022	4.35	15,310,000
		<hr/>
		<u>\$ 203,580,000</u>

**WISCONSIN DEPARTMENT OF TRANSPORTATION  
REVENUE BOND PROGRAM**

**SUPPLEMENTARY INFORMATION - BONDS OUTSTANDING - 2008 SERIES A  
JUNE 30, 2015**

---

<b>Maturity July 1,</b>	<b>Rate (%)</b>	<b>Principal</b>
2015	5.00	\$ 7,140,000
2016	5.00	7,500,000
2017	5.00	7,875,000
2018	5.00	<u>8,265,000</u>
		<u>\$ 30,780,000</u>

**WISCONSIN DEPARTMENT OF TRANSPORTATION  
REVENUE BOND PROGRAM**

**SUPPLEMENTARY INFORMATION - BONDS OUTSTANDING - 2009 SERIES B (TAXABLE)  
JUNE 30, 2015**

---

<b>Maturity July 1,</b>	<b>Rate (%)</b>	<b>Principal</b>
2015	3.54	\$ 6,390,000
2016	4.00	6,615,000
2017	4.15	6,880,000
2018	4.44	7,165,000
2019	4.54	7,485,000
2020	4.74	7,825,000
2021	4.89	8,200,000
2022	5.04	8,600,000
2023	5.19	9,040,000
2024	5.29	9,510,000
2025	5.44	10,015,000
2026	5.84	10,555,000
2027	5.84	11,180,000
2028	5.84	11,840,000
2029	5.84	12,545,000
2030	5.84	13,285,000
		<hr/>
		<b>\$ 147,130,000</b>
		<hr/>

**WISCONSIN DEPARTMENT OF TRANSPORTATION  
REVENUE BOND PROGRAM**

**SUPPLEMENTARY INFORMATION - BONDS OUTSTANDING - 2010 SERIES A  
JUNE 30, 2015**

---

<b>Maturity July 1,</b>	<b>Rate (%)</b>	<b>Principal</b>
2015	5.00	\$ 7,000,000
2016	5.00	7,350,000
2017	5.00	7,720,000
2018	5.00	8,105,000
2019	5.00	8,510,000
2020	5.00	8,935,000
2021	5.00	<u>9,385,000</u>
		<u>\$ 57,005,000</u>

**WISCONSIN DEPARTMENT OF TRANSPORTATION  
REVENUE BOND PROGRAM**

**SUPPLEMENTARY INFORMATION - BONDS OUTSTANDING - 2010 SERIES B (TAXABLE)  
JUNE 30, 2015**

---

<b>Maturity July 1,</b>	<b>Rate (%)</b>	<b>Principal</b>
2022	4.70	\$ 9,850,000
2023	4.90	10,345,000
2024	5.10	10,865,000
2025	5.30	11,405,000
2026	5.50	11,975,000
2027	5.60	12,575,000
2028	5.70	13,205,000
2029	5.80	13,865,000
2030	5.85	14,555,000
2031	6.00	15,285,000
		<hr/>
		<b>\$ 123,925,000</b>
		<hr/> <hr/>

**WISCONSIN DEPARTMENT OF TRANSPORTATION  
REVENUE BOND PROGRAM**

**SUPPLEMENTARY INFORMATION - BONDS OUTSTANDING - 2012 SERIES 1  
JUNE 30, 2015**

---

<b>Maturity July 1,</b>	<b>Rate (%)</b>	<b>Principal</b>
2015	4.00 & 5.00 (1)	\$ 12,710,000
2016	5.00	6,205,000
2017	5.00	6,510,000
2018	5.00	6,840,000
2019	5.00	7,180,000
2020	3.50 & 5.00 (2)	7,530,000
2021	5.00	39,575,000
2022	5.00	41,590,000
2023	5.00	39,045,000
2024	5.00	26,455,000
2025	5.00	9,560,000
2026	5.00	10,040,000
2027	5.00	10,540,000
2028	5.00	11,070,000
2029	5.00	11,620,000
2030	5.00	12,205,000
2031	5.00	12,815,000
2032	5.00	13,455,000
		<hr/>
		<b>\$ 284,945,000</b>
		<hr/>

(1) \$3,100,000 @ 4.00% and \$9,610,000 @ 5.00%

(2) \$2,500,000 @ 3.50% and \$5,030,000 @ 5.00%

**WISCONSIN DEPARTMENT OF TRANSPORTATION  
REVENUE BOND PROGRAM**

**SUPPLEMENTARY INFORMATION - BONDS OUTSTANDING - 2012 SERIES 2  
JUNE 30, 2015**

---

<b>Maturity July 1,</b>	<b>Rate (%)</b>	<b>Principal</b>
2017	4.00	\$ 11,335,000
2018	4.00	11,575,000
2019	4.00 & 5.00 (1)	12,035,000
2020	5.00	12,700,000
2021	5.00	13,425,000
2022	5.00	27,315,000
2023	5.00	13,665,000
2024	5.00	14,350,000
		<hr/>
		<b>\$ 116,400,000</b>
		<hr/> <hr/>

(1) \$3,195,000 @ 4.00% and \$8,840,000 @ 5.00%



**WISCONSIN DEPARTMENT OF TRANSPORTATION  
REVENUE BOND PROGRAM**

**SUPPLEMENTARY INFORMATION - BONDS OUTSTANDING - 2013 SERIES 1  
JUNE 30, 2015**

---

<b>Maturity July 1,</b>	<b>Rate (%)</b>	<b>Principal</b>
2016	4.00	\$ 9,715,000
2018	4.00 & 5.00 (1)	10,675,000
2019	4.00 & 5.00 (2)	11,290,000
2020	4.00 & 5.00 (3)	11,940,000
2021	4.00 & 5.00 (4)	12,585,000
2023	4.00 & 5.00 (5)	15,255,000
2024	5.00	25,935,000
2025	5.00	42,535,000
2026	5.00	26,975,000
2027	5.00	11,440,000
2028	5.00	12,010,000
2029	5.00	12,610,000
2030	5.00	13,240,000
2031	4.00	13,905,000
2032	4.50	14,460,000
2033	4.00 & 5.00 (6)	15,110,000
		<u>\$ 259,680,000</u>

- (1) \$2,500,000 @ 4.00% and \$8,175,000 @ 5.00%  
(2) \$3,500,000 @ 4.00% and \$7,790,000 @ 5.00%  
(3) \$6,000,000 @ 4.00% and \$5,940,000 @ 5.00%  
(4) \$3,690,000 @ 4.00% and \$8,895,000 @ 5.00%  
(5) \$7,000,000 @ 4.00% and \$8,255,000 @ 5.00%  
(6) \$13,110,000 @ 4.00% and \$2,000,000 @ 5.00%

**WISCONSIN DEPARTMENT OF TRANSPORTATION  
REVENUE BOND PROGRAM**

**SUPPLEMENTARY INFORMATION - BONDS OUTSTANDING - 2014 SERIES 1  
JUNE 30, 2015**

---

<b>Maturity July 1,</b>	<b>Rate (%)</b>	<b>Principal</b>
2015	2.00	\$ 18,475,000
2016	5.00	12,930,000
2017	5.00	14,495,000
2018	5.00	1,830,000
2019	5.00	1,670,000
2020	5.00	9,715,000
2027	5.00	19,285,000
2028	5.00	20,255,000
2029	5.00	21,270,000
2030	5.00	22,330,000
2031	5.00	23,450,000
2032	4.50	24,620,000
2033	4.50	25,730,000
2034	4.50	26,885,000
		<hr/>
		<b>\$ 242,940,000</b>
		<hr/> <hr/>

**WISCONSIN DEPARTMENT OF TRANSPORTATION  
REVENUE BOND PROGRAM**

**SUPPLEMENTARY INFORMATION - BONDS OUTSTANDING - 2014 SERIES 2  
JUNE 30, 2015**

---

<b>Maturity July 1,</b>	<b>Rate (%)</b>	<b>Principal</b>
2019	5.00	\$ 8,040,000
2020	5.00	8,440,000
2021	5.00	8,860,000
2022	5.00	9,300,000
2023	5.00	9,770,000
2024	5.00	10,255,000
2025	5.00	10,770,000
2026	5.00	11,305,000
2027	5.00	17,390,000
		<hr/>
		<b>\$ 94,130,000</b>
		<hr/> <hr/>

**WISCONSIN DEPARTMENT OF TRANSPORTATION  
REVENUE BOND PROGRAM**

**SUPPLEMENTARY INFORMATION - BONDS OUTSTANDING - 2015 SERIES 1  
JUNE 30, 2015**

---

<b>Maturity July 1,</b>	<b>Rate (%)</b>	<b>Principal</b>
2016	1.00	\$ 17,555,000
2017	5.00	23,255,000
2018	5.00	12,390,000
2019	5.00	13,105,000
2021	5.00	26,605,000
2022	5.00	13,940,000
2023	5.00	14,640,000
2024	5.00	15,370,000
2025	5.00	16,135,000
2026	5.00	16,950,000
2027	5.00	11,830,000
2028	5.00	12,420,000
2029	5.00	13,045,000
		<hr/>
		<b>\$ 207,240,000</b>
		<hr/>
<b>Total Bonds Outstanding</b>		<b><u>\$ 1,960,885,000</u></b>

## **UNAUDITED INFORMATION**

The following information has been prepared by the Wisconsin Department of Transportation and is unaudited.

Unaudited Information

**WISCONSIN DEPARTMENT OF TRANSPORTATION  
REVENUE OBLIGATION PROGRAM**

Schedule of Program Revenue (Unaudited)  
For the Fiscal Years Ended June 30, 2015 and 2014

Date	Section 341.25 Registration Fees			Title Transaction Fees	Counter Service Fees and Personalized License Plates		Subtotal (1)	Other Miscellaneous Vehicle Registration & Related Fees	Total Program Revenues
	Registration Non-IRP	IRP Revenues (2)	Subtotal						
July, 2014	\$ 37,638,454	\$ 4,524,112	\$ 42,162,567	\$ 8,775,089	\$ 740,526	\$ 51,678,182	\$ 1,313,767	\$ 52,991,948	
August, 2014	32,677,396	3,984,066	36,661,463	8,280,510	645,381	45,587,354	1,155,264	46,742,618	
September, 2014	34,939,665	6,284,393	41,224,058	8,451,515	646,591	50,322,164	1,267,713	51,589,877	
October, 2014	34,715,423	7,040,536	41,755,959	8,747,785	643,490	51,147,233	1,259,499	52,406,732	
November, 2014	35,855,627	5,097,519	40,953,146	6,165,285	469,858	47,588,289	1,034,132	48,622,422	
December, 2014	53,502,583	6,892,615	60,395,198	6,937,152	520,334	67,852,684	1,112,465	68,965,149	
January, 2015	38,167,850	5,507,327	43,675,177	7,015,709	558,635	51,249,522	1,102,227	52,351,749	
February, 2015	33,365,630	8,493,761	41,859,391	7,048,179	574,846	49,482,416	1,072,161	50,554,577	
March, 2015	44,025,728	15,363,545	59,389,273	9,028,215	729,526	69,147,014	1,441,214	70,588,228	
April, 2015	38,960,236	14,339,911	53,300,148	8,960,240	731,462	62,991,850	1,366,208	64,358,058	
May, 2015	35,342,834	4,147,031	39,489,865	8,341,356	668,089	48,499,310	1,279,170	49,778,481	
June, 2015	40,333,025	6,238,829	46,571,854	9,378,191	750,069	56,700,114	1,417,708	58,117,822	
<b>TOTAL for Fiscal Year ended June 30, 2015</b>	<b>\$ 459,524,452</b>	<b>\$ 87,913,646</b>	<b>\$ 547,438,098</b>	<b>\$ 97,129,227</b>	<b>\$ 7,678,806</b>	<b>\$ 652,246,131</b>	<b>\$ 14,821,529</b>	<b>\$ 667,067,661</b>	
July, 2013	\$ 37,420,723	\$ 4,511,851	\$ 41,932,574	\$ 8,409,269	\$ 715,218	\$ 51,057,061	\$ 1,218,501	\$ 52,275,562	
August, 2013	33,741,959	3,698,286	37,440,245	8,802,578	686,270	46,929,093	1,191,376	48,120,469	
September, 2013	33,013,367	5,433,093	38,446,460	7,802,290	612,488	46,861,238	1,137,146	47,998,384	
October, 2013	32,924,498	6,413,250	39,337,748	8,113,245	642,365	48,093,358	1,202,679	49,296,037	
November, 2013	37,032,026	5,179,752	42,211,778	6,414,572	487,200	49,113,550	991,000	50,104,550	
December, 2013	49,732,802	6,353,075	56,085,877	5,863,227	478,399	62,427,503	958,666	63,386,169	
January, 2014	39,839,307	5,943,123	45,782,430	6,560,420	566,033	52,908,883	1,073,322	53,982,205	
February, 2014	32,950,232	9,397,468	42,347,700	6,301,494	561,649	49,210,843	952,231	50,163,074	
March, 2014	43,325,691	10,202,668	53,528,359	8,012,442	774,455	62,315,256	1,242,219	63,557,475	
April, 2014	42,673,808	13,371,118	56,044,926	8,743,445	833,845	65,622,216	1,324,103	66,946,319	
May, 2014	37,355,874	9,509,499	46,865,373	8,503,367	758,999	56,127,739	1,430,652	57,558,391	
June, 2014	38,888,083	5,440,231	44,328,314	8,951,998	721,632	54,001,944	1,331,611	55,333,555	
<b>TOTAL for Fiscal Year ended June 30, 2014</b>	<b>\$ 458,898,370</b>	<b>\$ 85,453,414</b>	<b>\$ 544,351,784</b>	<b>\$ 92,478,347</b>	<b>\$ 7,838,553</b>	<b>\$ 644,668,684</b>	<b>\$ 14,053,506</b>	<b>\$ 658,722,190</b>	

(1) This is the amount of Program Revenue for which the State has undertaken to provide continuing disclosure and the amount of Program Revenue that will be used for determining the debt service coverage ratio and the additional bonds test.

(2) IRP - The International Registration Plan is a multi-state compact for collecting and sharing large truck registration fees. Under the IRP, the registration fees on trucks involved in multi-state commercial activity are collected by the state in which the company is headquartered and are split between the participating states on the basis of proportionate mileage.

Source: Wisconsin Department of Transportation

Unaudited Information

**WISCONSIN DEPARTMENT OF TRANSPORTATION  
REVENUE BOND PROGRAM**

Schedule of Motor Vehicle Registration and Registration-Related Fees--Cash Basis (Unaudited)  
For the Fiscal Years Ended June 30, 2015 and 2014

	<u>2015</u>	<u>2014</u>
Motor Vehicle Registration and Related Fees Collected	\$ 667,067,661	\$ 658,722,190
Less:		
Motor Vehicle Registration and Related Fees Retained by Trustee for Commercial Paper Program	(25,870,478)	(21,016,924)
Motor Vehicle Registration and Related Fees Available for Transportation Fund	<u>(446,903,502)</u>	<u>(442,957,329)</u>
Motor Vehicle Registration and Related Fees Retained by Trustee for Revenue Bond Program	<u>\$ 194,293,681</u>	<u>\$ 194,747,937</u>

Note: The Commercial Paper Program is subordinate to the pledge of Program Income for payment of Revenue Bond obligations. Program Income in excess of the amounts needed for the Commercial Paper or Revenue Bond Programs is transferred to the State Transportation Fund.

Source: Wisconsin Department of Transportation

**WISCONSIN DEPARTMENT OF TRANSPORTATION  
COMMERCIAL PAPER PROGRAM**

**Statements of Cash Receipts and Disbursements  
for the Fiscal Years Ended June 30, 2015 and 2014  
with Independent Auditors' Report**



**WISCONSIN DEPARTMENT OF TRANSPORTATION  
COMMERCIAL PAPER PROGRAM**

**TABLE OF CONTENTS**

---

	<b>Page</b>
INDEPENDENT AUDITORS' REPORT	1 - 2
STATEMENTS OF CASH RECEIPTS AND DISBURSEMENTS For the Fiscal Years Ended June 30, 2015 and 2014	3
NOTES TO STATEMENTS OF CASH RECEIPTS AND DISBURSEMENTS	4 - 8
UNAUDITED INFORMATION	
Schedule of Program Revenue (Unaudited)	9
Schedule of Motor Vehicle Registration and Registration-Related Fees - Cash Basis (Unaudited)	10

## INDEPENDENT AUDITORS' REPORT

To the Wisconsin Department of Transportation  
State of Wisconsin

### **Report on the Financial Statements**

We have audited the accompanying statements of cash receipts and disbursements of the Wisconsin Department of Transportation Commercial Paper Program (the "Program") for the fiscal years ended June 30, 2015 and 2014, and the related notes to statements of cash receipts and disbursements.

### ***Management's Responsibility for the Financial Statements***

Management is responsible for the preparation and fair presentation of these financial statements in accordance with the cash basis of accounting described in Note 2; this includes determining that the cash basis of accounting is an acceptable basis for the preparation of the financial statements in the circumstances. Management is also responsible for the design, implementation, and maintenance of internal control relevant to the preparation and fair presentation of financial statements that are free from material misstatement, whether due to fraud or error.

### ***Auditors' Responsibility***

Our responsibility is to express an opinion on these financial statements based on our audit. We conducted our audit in accordance with auditing standards generally accepted in the United States of America and the standards applicable to financial audits contained in *Government Auditing Standards*, issued by the Comptroller General of the United States. Those standards require that we plan and perform the audit to obtain reasonable assurance about whether the financial statements are free of material misstatement.

An audit involves performing procedures to obtain audit evidence about the amounts and disclosures in the financial statements. The procedures selected depend on the auditors' judgment, including the assessment of the risks of material misstatement of the financial statements, whether due to fraud or error. In making those risk assessments, the auditors consider internal control relevant to the Program's preparation and fair presentation of the financial statements in order to design audit procedures that are appropriate in the circumstances, but not for the purpose of expressing an opinion on the effectiveness of the Program's internal control. Accordingly, we express no such opinion. An audit also includes evaluating the appropriateness of accounting policies used and the reasonableness of significant accounting estimates made by management, as well as evaluating the overall presentation of the financial statements.

We believe that the audit evidence we have obtained is sufficient and appropriate to provide a basis for our audit opinion.

### ***Opinion***

In our opinion, the financial statements referred to above present fairly, in all material respects, the statements of cash receipts and disbursements of the Wisconsin Department of Transportation Commercial Paper Program for the years ended June 30, 2015 and 2014, in accordance with the cash basis of accounting as described in Note 2.

***Basis of Accounting***

We draw attention to Note 2 of the notes to the statements of cash receipts and disbursements, which describes the basis of accounting. This financial statement is prepared on the cash basis of accounting, which is a basis of accounting other than accounting principles generally accepted in the United States of America. Our opinion is not modified with respect to that matter.

***Other Matters***

Management has omitted the management's discussion and analysis that accounting principles generally accepted in the United States of America require to be presented to supplement the financial statements. Such missing information, although not a part of the financial statements, is required by the Governmental Accounting Standards Board, who considers it to be an essential part of financial reporting for placing the financial statements in an appropriate operational, economic, or historical context. Our opinion on the financial statements is not affected by this missing information.

The schedule of program revenue and schedule of motor vehicle registration and registration-related fees – cash basis on pages 9 and 10 have not been subject to the auditing procedures applied in the audits of the statements of cash receipts and disbursements and, accordingly, we do not express an opinion or provide any assurance on them.

***Other Reporting Required by Government Auditing Standards***

In accordance with *Government Auditing Standards*, we have also issued our report dated October 15, 2015, on our consideration of the Program's internal control over financial reporting and on our tests of its compliance with certain provisions of laws, regulations, contracts and grant agreements and other matters. The purpose of that report is to describe the scope of our testing of internal control over financial reporting and compliance and the results of that testing, and not to provide an opinion on the internal control over financial reporting or on compliance. That report is an integral part of an audit performed in accordance with *Government Auditing Standards* in considering the Program's internal control over financial reporting and compliance.



Certified Public Accountants  
Green Bay, Wisconsin  
October 15, 2015

**WISCONSIN DEPARTMENT OF TRANSPORTATION  
COMMERCIAL PAPER PROGRAM**

**STATEMENTS OF CASH RECEIPTS AND DISBURSEMENTS  
FOR THE FISCAL YEARS ENDED JUNE 30, 2015 AND 2014**

	<b>2015</b>	<b>2014</b>
CASH AND INVESTMENTS, BEGINNING OF FISCAL YEAR	\$ 22,879,291	\$ 20,617,128
RECEIPTS:		
Motor vehicle registration fees retained by Trustee	25,870,478	21,016,924
Investment income	46,862	387,816
Commercial paper note proceeds	-	70,025,000
	<u>25,917,340</u>	<u>91,429,740</u>
Total receipts		
DISBURSEMENTS:		
Debt service - principal	19,565,000	18,575,000
Debt service - interest	158,051	140,678
Net premium paid/(discount earned) on investments	43,170	424,004
Highway program expenditures	-	69,972,314
Note issuance costs	-	55,581
	<u>19,766,221</u>	<u>89,167,577</u>
Total disbursements		
CASH AND INVESTMENTS, END OF FISCAL YEAR	<u>\$ 29,030,410</u>	<u>\$ 22,879,291</u>
Cash and investments restricted for debt service	<u>\$ 29,030,410</u>	<u>\$ 22,879,291</u>

See notes to statements of cash receipts and disbursements.

# WISCONSIN DEPARTMENT OF TRANSPORTATION COMMERCIAL PAPER PROGRAM

## NOTES TO STATEMENTS OF CASH RECEIPTS AND DISBURSEMENTS FOR THE FISCAL YEARS ENDED JUNE 30, 2015 AND 2014

### 1. NATURE OF PROGRAM

The State of Wisconsin Transportation Revenue Commercial Paper Program (the "Program") originated on April 23, 1997, pursuant to the adoption of the Program Resolution, as amended, by the State of Wisconsin Building Commission. The Program Resolution is a Series Resolution to the General Resolution, as amended, adopted by the Commission. The purpose of the Program is to provide financing for the construction, maintenance and repair of certain major highway projects and transportation facilities. Receipts provided from motor vehicle registration fees and certain other vehicle registration-related fees are used to service the Program's borrowing obligations, after the debt service requirements for the Transportation Revenue Bond Program have been met. The Wisconsin Department of Transportation ("Department") is responsible for managing the construction projects and the collection of motor vehicle registration fees and certain other vehicle registration-related fees.

The Department has statutory authority (as amended) as of June 30, 2015, to issue a total of \$3,768,059,300 of revenue obligations, including notes and excluding refunded bonds. The Program has authority to issue notes in an aggregate outstanding principal amount not to exceed \$275,000,000, in order to partially finance the costs of the authorized projects, in addition to proceeds from the Transportation Revenue Bond Program, State of Wisconsin ("State") general obligation debt, federal aid and other money in the State Transportation Fund. As of June 30, 2015, the Department has remaining authority to issue \$243,213,091 of additional obligations.

As part of the State's reporting entity, the Program's financial information is included in the State of Wisconsin Comprehensive Annual Financial Report.

### 2. SUMMARY OF SIGNIFICANT ACCOUNTING POLICIES

***Cash Receipts and Disbursements Basis of Accounting***—The statements of cash receipts and disbursements present the Program's cash receipts and disbursements, which is a comprehensive basis of accounting other than accounting principles generally accepted in the United States of America. Under this basis of accounting, cash receipts are recorded when received and disbursements are recorded when paid. The cash and investments balance is presented at cost.

The Department has entered into trust agreements, as amended, with The Bank of New York Mellon Trust Company, N.A. (the "Trustee"), relating to the creation and administration of the Transportation Revenue Commercial Paper Notes of 1997 Series A, 2006 Series A and 2013 Series A. Among other provisions, the trust agreements, in conjunction with the General Resolution, specify those funds to be created and maintained, the timing and flow of monies through the funds, and the procedure to be followed for the redemption of the notes.

It is the Department's view that the statements of cash receipts and disbursements along with the related notes meet the reporting requirements of the trust agreements.

# WISCONSIN DEPARTMENT OF TRANSPORTATION COMMERCIAL PAPER PROGRAM

## NOTES TO STATEMENTS OF CASH RECEIPTS AND DISBURSEMENTS FOR THE FISCAL YEARS ENDED JUNE 30, 2015 AND 2014

### 2. SUMMARY OF SIGNIFICANT ACCOUNTING POLICIES (Continued)

U.S. Bank National Association is the Issuing and Paying Agent (the "Agent") for the Notes. The Depository Trust Company ("DTC") serves as securities depository for the Notes. Purchasers of the Notes do not receive note certificates but instead have their ownership recorded in the DTC book-entry system. The Trustee transfers to the Agent monies sufficient to cover Note principal and interest payments; the Agent makes payment to the DTC. Owners of the Notes receive payments through brokers and other organizations participating in the DTC system.

#### *Receipts and Disbursements—*

*Motor Vehicle Registration Fees Retained by Trustee* - Motor vehicle registration fees and certain other vehicle registration-related fees retained by the Trustee are recorded at time of impounding, when transfer of possession occurs.

*Investment Income* - Investment income is recorded when received.

*Commercial Paper Note Proceeds* - Proceeds are recorded as receipts on the date of closing at gross value of the issuance when new notes are issued by the Program to finance highway related project costs. Notes maturing and subsequently reissued during the year are not reported as cash receipts and disbursements in the financial statements. All related fees are reported as issuance costs within disbursements.

*Debt Service - Principal and Interest* - Cash payments for debt service are recorded when paid. Notes payable that mature and are replaced with new notes are not reflected in the statements of cash receipts and disbursements as there is no cash receipt or cash disbursement.

*Net Premium Paid/(Discount Earned) on Investments* - The net of the premium paid on investments purchased at more than face value and the discount earned on investments purchased at less than face value.

*Highway Program Expenditures—*Highway program expenditures are recorded when paid by the Program to the Transportation Fund of the State of Wisconsin.

### 3. CASH AND INVESTMENTS

The Program's investment policies are governed by the General Resolution and Wisconsin Statutes. The Program is authorized to invest in direct obligations of or obligations guaranteed by the United States, obligations of agencies created or sponsored by an Act of Congress, obligations of any state or municipality that are rated in either of the two highest rating categories by a nationally recognized bond rating agency, bankers acceptances and certificates of deposit from banks with combined capital and surplus aggregating at least \$100 million whose securities are rated within the two highest rating categories assigned by a nationally recognized rating agency, corporate commercial paper given the highest rating by Standard & Poor's Ratings Services and Moody's Investors Service, Inc., and a fund whose assets consist of direct obligations or obligations guaranteed by the United States or obligations of agencies created or sponsored by Congress. Program assets are to be invested in the highest yielding authorized securities, with maturity or redemption dates coinciding as closely as possible with cash flow and liquidity needs of Program operations.

# WISCONSIN DEPARTMENT OF TRANSPORTATION COMMERCIAL PAPER PROGRAM

## NOTES TO STATEMENTS OF CASH RECEIPTS AND DISBURSEMENTS FOR THE FISCAL YEARS ENDED JUNE 30, 2015 AND 2014

### 3. CASH AND INVESTMENTS (Continued)

During fiscal years 2015 and 2014, the Program's assets were held in a deposit account or invested in money market funds, federal agency securities and U.S. Treasury securities. The money market funds invest exclusively in obligations of the U.S. Treasury, including Treasury bills, bonds and notes. Program assets are reported at cost.

The following table summarizes the cost and fair market value for each of the investments:

Investments	June 30, 2015		June 30, 2014	
	Cost	Fair Value	Cost	Fair Value
Bank of New York Cash Reserve (deposit account)	\$ 3,175,865	\$ 3,175,865	\$ 830,478	\$ 830,478
Money Market Funds:				
• Dreyfus Treasury Cash Management	8,711,278	8,711,278	19,839,044	19,839,044
• Fidelity Institutional - Treasury Portfolio	1,474,452	1,474,452	1,585,593	1,585,593
• Goldman Sachs Financial Sq Funds	577,663	577,663	624,176	624,176
Federal Agency Securities:				
• Federal National Mortgage Association Discount Notes	6,742,103	6,750,000	-	-
• Federal Home Loan Bank Discount Notes	6,742,419	6,743,000	-	-
• Federal Home Loan Mortgage Corp Discount Notes	<u>1,606,630</u>	<u>1,607,000</u>	-	-
Totals	<u>\$ 29,030,410</u>	<u>\$ 29,039,258</u>	<u>\$ 22,879,291</u>	<u>\$ 22,879,291</u>

Investments of the Program are subject to various risks:

- Custodial credit risk is the risk that, in the event of failure of the counterparty (e.g., broker-dealer) to a transaction, the Program will not be able to recover the value of investments or collateral securities that are in the possession of another party. The deposit account is FDIC-insured up to \$250,000 but is not collateralized. Money market funds are not insured or collateralized. Securities of the U.S. government were registered and held by the Program's agent in the Program's name.
- Credit risk is the risk that an issuer of an investment will not fulfill its obligation to the holder of the investment. This risk is measured by the assignment of a rating by a nationally recognized statistical rating organization, such as Standard & Poor's Ratings Services, Moody's Investors Service, Inc., and Fitch Ratings. As of June 30, 2015, the deposit account was rated AA1 by Moody's, AA- by Standard & Poor's and AA by Fitch. Standard & Poor's rating for U.S. government and federal agencies securities was AA+. Fitch's rating for the government fund was A. All remaining investments were rated AAA.

# WISCONSIN DEPARTMENT OF TRANSPORTATION COMMERCIAL PAPER PROGRAM

## NOTES TO STATEMENTS OF CASH RECEIPTS AND DISBURSEMENTS FOR THE FISCAL YEARS ENDED JUNE 30, 2015 AND 2014

### 3. CASH AND INVESTMENTS (Continued)

- Concentration of credit risk may be a concern if investments in any one issuer represent 5 percent or more of net Program assets, excluding investments issued or explicitly guaranteed by the U.S. government and investments in mutual funds, external investment pools, and other pooled investments. Concentration of credit risk is not addressed in the Program's investment requirements. As of June 30, 2015, 11 percent of the Program's assets were held in a deposit account. 52 percent of the Program's assets were invested in federal agency securities and 37 percent in money market funds; however, these funds solely invest in U.S. government securities.
- Interest rate risk is the risk that changes in market interest rates will adversely affect the fair value of an investment. Generally, the longer the maturity of an investment, the greater the sensitivity of its fair value to changes in market interest rates. Money market funds are liquid, having no future maturity dates while federal agency securities mature on July 1, 2015.
- Foreign currency risk is the risk that changes in currency exchange rates will adversely affect the fair value of an investment. Foreign currency holdings are not specifically addressed in the Program's investment requirements; however, no investments denominated in foreign currency were held by the Program as of June 30, 2015.

### 4. NOTES PAYABLE

The notes consist of interest-bearing obligations issued in initial denominations of \$100,000 and additional increments of \$1,000 above \$100,000. The notes are issued pursuant to Subchapter II of Chapter 18 of the Wisconsin Statutes as amended, Section 84.59 of the Wisconsin Statutes, the General Resolution, a Program Resolution and Series Resolutions adopted by the State of Wisconsin Building Commission. The notes are revenue obligations of the State, payable solely from the Subordinated Debt Service Fund (see Note 5).

The State is not generally liable on the notes, nor are the projects financed by the notes pledged as collateral. The notes are collateralized by a pledge of income derived from vehicle registration fees under Section 341.25 of the Wisconsin Statutes and certain other vehicle registration-related fees, as collected by the Trustee ("Program Income"). The notes are subordinate to the pledge of Program Income for payment of the State Transportation Revenue Bonds outstanding. The State has covenanted in the General Resolution that it will charge motor vehicle registration fees and certain other vehicle registration-related fees sufficient to pay principal and interest on the notes. Fees collected in excess of the amount needed to service this Program and the outstanding State Transportation Revenue Bonds are transferred to the Department pursuant to the General Resolution.

In order to assure the timely payment of principal and interest on the notes, the State has entered into an Amended and Restated Credit Agreement, dated April 15, 2013, (the liquidity facility agreement) with State Street Bank and Trust Company and California State Teachers' Retirement System for a line of credit which is severally provided (but not jointly) in the respective percentages of 60 percent and 40 percent. As of June 30, 2015, the commitment amount is \$175,000,000, an amount not less than the note principal outstanding at that time. This Credit Agreement expires April 25, 2016, but may be extended upon agreement of both parties. The Credit Agreement describes events which, if they occur, would cause early termination.



**WISCONSIN DEPARTMENT OF TRANSPORTATION  
COMMERCIAL PAPER PROGRAM**

**NOTES TO STATEMENTS OF CASH RECEIPTS AND DISBURSEMENTS  
FOR THE FISCAL YEARS ENDED JUNE 30, 2015 AND 2014**

**4. NOTES PAYABLE (Continued)**

The notes will mature no later than 270 days from the date of issuance provided that a liquidity facility agreement is in effect. No notes may be issued with a maturity date after the stated expiration of the liquidity facility agreement or after the stated date of a substitute liquidity facility agreement. The principal of and interest on the notes will be paid at maturity and the notes are not callable prior to maturity. The State expects to pay the principal on the notes with the proceeds of additional notes until the State provides permanent financing through the issuance of long-term transportation revenue bonds. Each note bears interest from its date of issuance, at the rate determined on the date of issuance (which may not exceed 12% per annum).

A summary of the notes outstanding as of June 30, 2015 and 2014 is as follows:

	<u>2015</u>	<u>2014</u>
Commercial Paper Notes of 1997, Series A	\$ 41,878,000	\$ 51,718,000
Commercial Paper Notes of 2006, Series A	32,200,000	41,925,000
Commercial Paper Notes of 2013, Series A	<u>70,025,000</u>	<u>70,025,000</u>
Total Notes Payable as of June 30	\$ <u>144,103,000</u>	\$ <u>163,668,000</u>

As of June 30, 2015, the Commercial Paper Notes of 1997, Series A had maturities ranging from August 3 to August 6, 2015. The Commercial Paper Notes of 2006, Series A had maturities ranging from August 3 to August 6, 2015. The Commercial Paper Notes of 2013, Series A had maturities ranging from September 1 to October 8, 2015. The weighted average interest rate of all series of Transportation Revenue Commercial Paper notes was 0.0926%

As of June 30, 2014, the Commercial Paper Notes of 1997, Series A had maturities ranging from August 7 to October 6, 2014, and a weighted average interest rate of 0.10%. The Commercial Paper Notes of 2006, Series A had maturities ranging from August 7 to October 6, 2014, and a weighted average interest rate of 0.10%. The Commercial Paper Notes of 2013, Series A had maturities ranging from July 9 to October 3, 2014, and a weighted average interest rate of 0.10%

**5. SUBORDINATED DEBT SERVICE FUND**

The General Resolution creates a Subordinated Debt Service Fund which is intended to be used to provide for the payment of principal and interest on the notes from Program Income deposited into this fund. The pledge of such Program Income to payment of the notes is subordinate to the pledge of Program Income to payment of outstanding State Transportation Revenue Bonds.

**6. ADMINISTRATIVE EXPENSES**

The Program is not charged for certain departmental administrative expenses related to the operation of the Program. All such costs are charged to the Transportation Fund of the State of Wisconsin. Expenses related to dealer fees, issuing and paying agent fees, trustee fees, bond rating fees, audit fees and other expenses of the Program are paid by the Revenue Bond Program.

\*\*\*\*\*

## **UNAUDITED INFORMATION**

The following information has been prepared by the Wisconsin Department of Transportation and is unaudited.

Unaudited Information

**WISCONSIN DEPARTMENT OF TRANSPORTATION  
REVENUE OBLIGATION PROGRAM**

Schedule of Program Revenue (Unaudited)  
For the Fiscal Years Ended June 30, 2015 and 2014

Date	Section 341.25 Registration Fees			Title Transaction Fees	Counter Service Fees and Personalized License Plates	Subtotal (1)	Other Miscellaneous Vehicle Registration & Related Fees	Total Program Revenues
	Registration Non-IRP	IRP Revenues (2)	Subtotal					
July, 2014	\$ 37,638,454	\$ 4,524,112	\$ 42,162,567	\$ 8,775,089	\$ 740,526	\$ 51,678,182	\$ 1,313,767	\$ 52,991,948
August, 2014	32,677,396	3,984,066	36,661,463	8,280,510	645,381	45,587,354	1,155,264	46,742,618
September, 2014	34,939,665	6,284,393	41,224,058	8,451,515	646,591	50,322,164	1,267,713	51,589,877
October, 2014	34,715,423	7,040,536	41,755,959	8,747,785	643,490	51,147,233	1,259,499	52,406,732
November, 2014	35,855,627	5,097,519	40,953,146	6,165,285	469,858	47,588,289	1,034,132	48,622,422
December, 2014	53,502,583	6,892,615	60,395,198	6,937,152	520,334	67,852,684	1,112,465	68,965,149
January, 2015	38,167,850	5,507,327	43,675,177	7,015,709	558,635	51,249,522	1,102,227	52,351,749
February, 2015	33,365,630	8,493,761	41,859,391	7,048,179	574,846	49,482,416	1,072,161	50,554,577
March, 2015	44,025,728	15,363,545	59,389,273	9,028,215	729,526	69,147,014	1,441,214	70,588,228
April, 2015	38,960,236	14,339,911	53,300,148	8,960,240	731,462	62,991,850	1,366,208	64,358,058
May, 2015	35,342,834	4,147,031	39,489,865	8,341,356	668,089	48,499,310	1,279,170	49,778,481
June, 2015	40,333,025	6,238,829	46,571,854	9,378,191	750,069	56,700,114	1,417,708	58,117,822
<b>TOTAL for Fiscal Year ended June 30, 2015</b>	<b>\$ 459,524,452</b>	<b>\$ 87,913,646</b>	<b>\$ 547,438,098</b>	<b>\$ 97,129,227</b>	<b>\$ 7,678,806</b>	<b>\$ 652,246,131</b>	<b>\$ 14,821,529</b>	<b>\$ 667,067,661</b>
July, 2013	\$ 37,420,723	\$ 4,511,851	\$ 41,932,574	\$ 8,409,269	\$ 715,218	\$ 51,057,061	\$ 1,218,501	\$ 52,275,562
August, 2013	33,741,959	3,698,286	37,440,245	8,802,578	686,270	46,929,093	1,191,376	48,120,469
September, 2013	33,013,367	5,433,093	38,446,460	7,802,290	612,488	46,861,238	1,137,146	47,998,384
October, 2013	32,924,498	6,413,250	39,337,748	8,113,245	642,365	48,093,358	1,202,679	49,296,037
November, 2013	37,032,026	5,179,752	42,211,778	6,414,572	487,200	49,113,550	991,000	50,104,550
December, 2013	49,732,802	6,353,075	56,085,877	5,863,227	478,399	62,427,503	958,666	63,386,169
January, 2014	39,839,307	5,943,123	45,782,430	6,560,420	566,033	52,908,883	1,073,322	53,982,205
February, 2014	32,950,232	9,397,468	42,347,700	6,301,494	561,649	49,210,843	952,231	50,163,074
March, 2014	43,325,691	10,202,668	53,528,359	8,012,442	774,455	62,315,256	1,242,219	63,557,475
April, 2014	42,673,808	13,371,118	56,044,926	8,743,445	833,845	65,622,216	1,324,103	66,946,319
May, 2014	37,355,874	9,509,499	46,865,373	8,503,367	758,999	56,127,739	1,430,652	57,558,391
June, 2014	38,888,083	5,440,231	44,328,314	8,951,998	721,632	54,001,944	1,331,611	55,333,555
<b>TOTAL for Fiscal Year ended June 30, 2014</b>	<b>\$ 458,898,370</b>	<b>\$ 85,453,414</b>	<b>\$ 544,351,784</b>	<b>\$ 92,478,347</b>	<b>\$ 7,838,553</b>	<b>\$ 644,668,684</b>	<b>\$ 14,053,506</b>	<b>\$ 658,722,190</b>

- (1) This is the amount of Program Revenue for which the State has undertaken to provide continuing disclosure and the amount of Program Revenue that will be used for determining the debt service coverage ratio and the additional bonds test.
- (2) IRP - The International Registration Plan is a multi-state compact for collecting and sharing large truck registration fees. Under the IRP, the registration fees on trucks involved in multi-state commercial activity are collected by the state in which the company is headquartered and are split between the participating states on the basis of proportionate mileage.

Source: Wisconsin Department of Transportation

Unaudited Information

**WISCONSIN DEPARTMENT OF TRANSPORTATION  
COMMERCIAL PAPER PROGRAM**

Schedule of Motor Vehicle Registration and Registration-Related Fees--Cash Basis (Unaudited)  
For the Fiscal Years Ended June 30, 2015 and 2014

	<u>2015</u>	<u>2014</u>
Motor Vehicle Registration and Related Fees Collected	\$ 667,067,661	\$ 658,722,190
Less:		
Motor Vehicle Registration and Related Fees Retained by Trustee for Revenue Bond Program	(194,293,681)	(194,747,937)
Motor Vehicle Registration and Related Fees Available for Transportation Fund	<u>(446,903,502)</u>	<u>(442,957,329)</u>
Motor Vehicle Registration and Related Fees Retained by Trustee for Commercial Paper Program	<u>\$ 25,870,478</u>	<u>\$ 21,016,924</u>

Note: The Commercial Paper Program is subordinate to the pledge of Program Income for payment of Revenue Bond obligations. Program Income in excess of the amounts needed for the Commercial Paper or Revenue Bond Programs is transferred to the State Transportation Fund.

Source: Wisconsin Department of Transportation